

WAAS CH 63031 W14A	APP CRS 141°	Rwy Idg 4008 TDZE 41 Apt Elev 41
--	------------------------	---

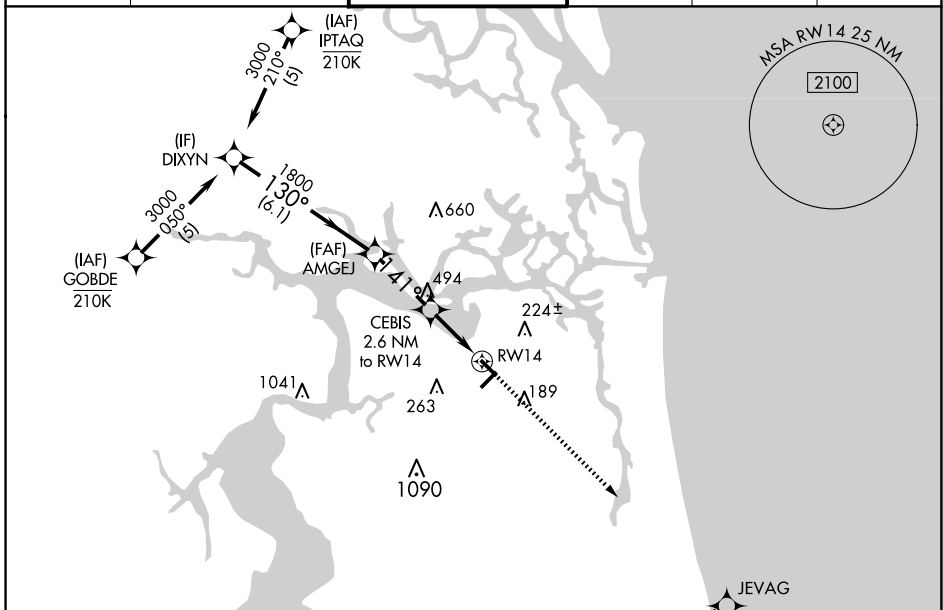
RNAV (GPS) RWY 14

JACKSONVILLE EXEC AT CRAIG (CRG)

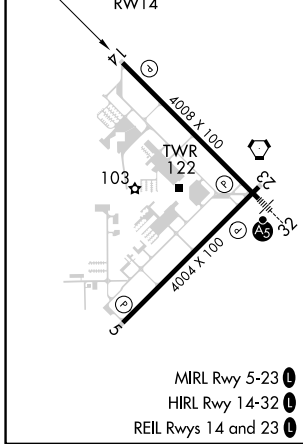
⚠ Procedure NA at night. Baro-VNAV NA when using Jacksonville Intl altimeter setting. For uncompensated Baro-VNAV systems, LNAV/VNAV NA below -3°C (27°F) or above 54°C (130°F).
⚠ DME/DME RNP-0.3 NA. Helicopter visibility reduction below 1 SM NA. When local altimeter setting not received, use Jacksonville Intl altimeter setting; increase LPV DA to 325 feet; increase LNAV/VNAV DA to 450 feet and all visibilities ½ SM; increase all MDAs 40 feet and Circling visibility Cat C ¼ SM.

MISSED APPROACH:
Climb to 1900 direct JEVAG and hold.

ATIS 125.4	JACKSONVILLE APP CON 124.9 308.4	CRAIG TOWER ★ 132.1 (CTAF) 269.525	GND CON 121.8	CLNC DEL 118.35	UNICOM 122.95
----------------------	--	---	-------------------------	---------------------------	-------------------------



ELEV	41	TDZE	41
------	----	------	----



	DIXYN			AMGEJ		CEBIS		1900	JEVAG
	3000			1800		*900		↑	✧
	130°			141°				*LNAV only.	
	GP 3.00°								
	TCH 44								
	6.1 NM			2.8 NM		2.6 NM			
CATEGORY	A		B		C		D		
LPV DA			293-1		252 (300-1)				
LNAV/VNAV DA			418-1¼		377 (400-1¼)				
LNAV MDA	500-1		459 (500-1)		500-1⅓		459 (500-1⅓)		
CIRCLING	500-1 459 (500-1)		600-1 559 (600-1)		620-1½ 579 (600-1½)		800-2½ 759 (800-2½)		

SE-3, 15 MAY 2025 to 12 JUN 2025

SE-3, 15 MAY 2025 to 12 JUN 2025