

WAAS CH <b>90511</b> <b>W09A</b>	APP CRS <b>091°</b>	Rwy Idg <b>5000</b> TDZE <b>125</b> Apt Elev <b>125</b>
--	------------------------	---

# RNAV (GPS) RWY 9L

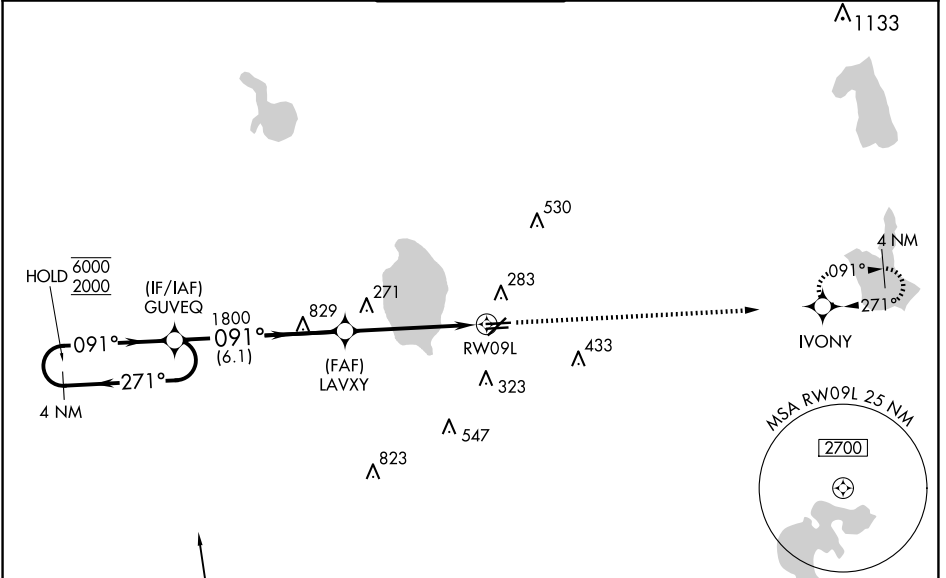
BARTOW EXEC (BOW)

RNP APCH.

**⚠** Rwy 9L helicopter visibility reduction below 3/4 SM NA. When local altimeter setting not received, use Tampa Intl altimeter setting and increase LPV DA to 548 feet, LNAV/VNAV DA to 645 feet and all MDA 120 feet, increase LNAV Cat C and D visibility 1/2 SM. For uncompensated Baro-VNAV systems, LNAV/VNAV NA below -15°C or above 54°C. VDP and Baro-VNAV NA when using Tampa Intl altimeter setting.

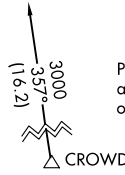
MISSED APPROACH: Climb to 2000 direct IVONY and hold.

AWOS-3 <b>123.775</b>	TAMPA APP CON <b>120.65 290.3</b>	BARTOW TOWER ★ <b>121.2</b> (CTAF)	GND CON <b>121.9</b>	UNICOM <b>122.95</b>
--------------------------	--------------------------------------	---------------------------------------	-------------------------	-------------------------

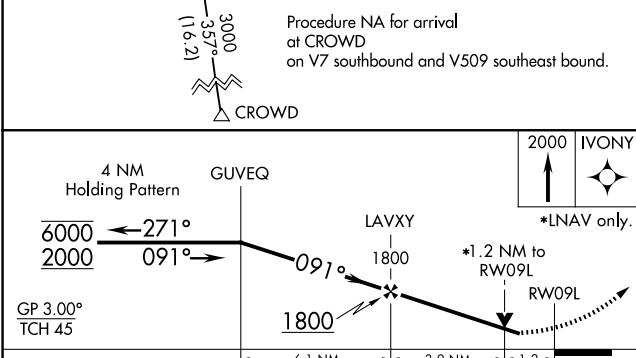


SE-3, 15 MAY 2025 to 12 JUN 2025

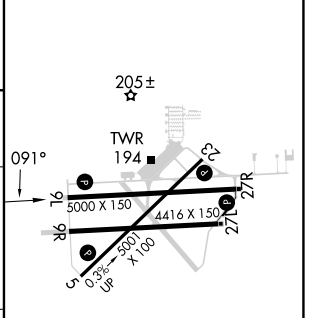
SE-3, 15 MAY 2025 to 12 JUN 2025



Procedure NA for arrival at CROWD on V7 southbound and V509 southeast bound.



ELEV 125	TDZE 125
----------	----------



CATEGORY	A	B	C	D
LPV DA		442-1 1/4	317 (400-1 1/4)	
LNAV/VNAV DA		539-1 1/2	414 (500-1 1/2)	
LNAV MDA	540-1	415 (500-1)	540-1 1/4	415 (500-1 1/4)

MIRL Rwy 5-23 and 9L-27R  
REIL Rwy 5, 23, 9L and 27R