

WAAS CH 58112 W05A	APP CRS 050°	Rwy Idg TDZE 123 Apt Elev 125	5001
--	------------------------	---	-------------

RNAV (GPS) RWY 5

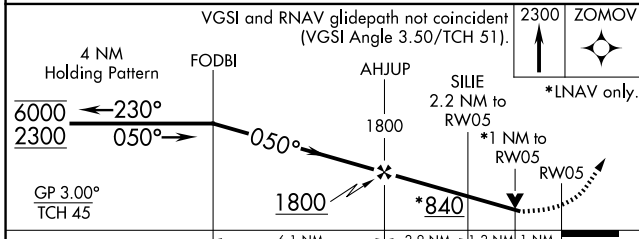
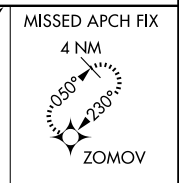
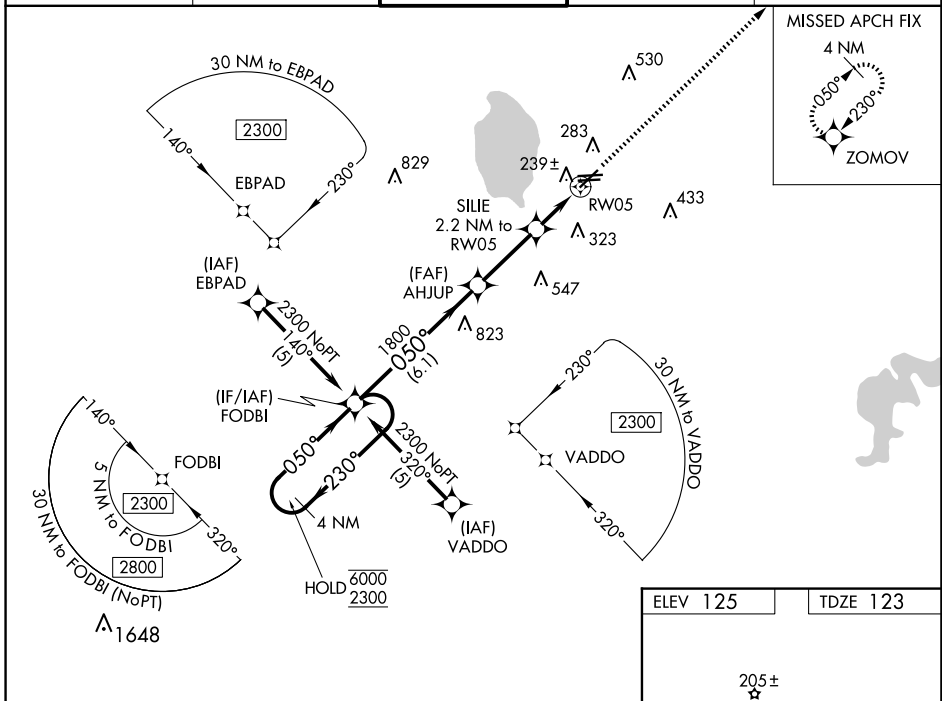
BARTOW EXEC (BOW)

RNP APCH.

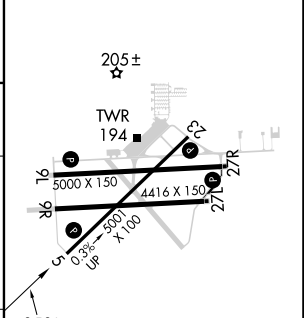
⚠ Rwy 5 helicopter visibility reduction below ¼ SM NA. When local altimeter setting not received, use Tampa Intl altimeter setting and increase LPV DA to 553 feet, LNAV/VNAV DA to 684 feet and all MDA 120 feet, increase LNAV Cat C visibility ¼ SM, Cat D ½ SM. For uncompensated Baro-VNAV systems, LNAV/VNAV NA below -1.5°C or above 54°C. VDP and Baro-VNAV NA when using Tampa Intl altimeter setting.

MISSED APPROACH:
Climb to 2300 direct
ZOMOV and hold.

AWOS-3 123.775	TAMPA APP CON 120.65 290.3	BARTOW TOWER ★ 121.20 (CTAF)	GND CON 121.9	UNICOM 122.95
--------------------------	--------------------------------------	---	-------------------------	-------------------------



ELEV 125	TDZE 123
----------	----------



CATEGORY	A	B	C	D
LPV DA		447-1¼	324 (400-1¼)	
LNAV/VNAV DA		509-1½	386 (400-1½)	
LNAV MDA	520-1	397 (400-1)	520-1⅛ 397 (400-1⅛)	520-1¼ 397 (400-1¼)

MIRL Rwy 5-23 and 9L-27R
REIL Rwy 5, 23, 9L and 27R

SE-3, 15 MAY 2025 to 12 JUN 2025

SE-3, 15 MAY 2025 to 12 JUN 2025