

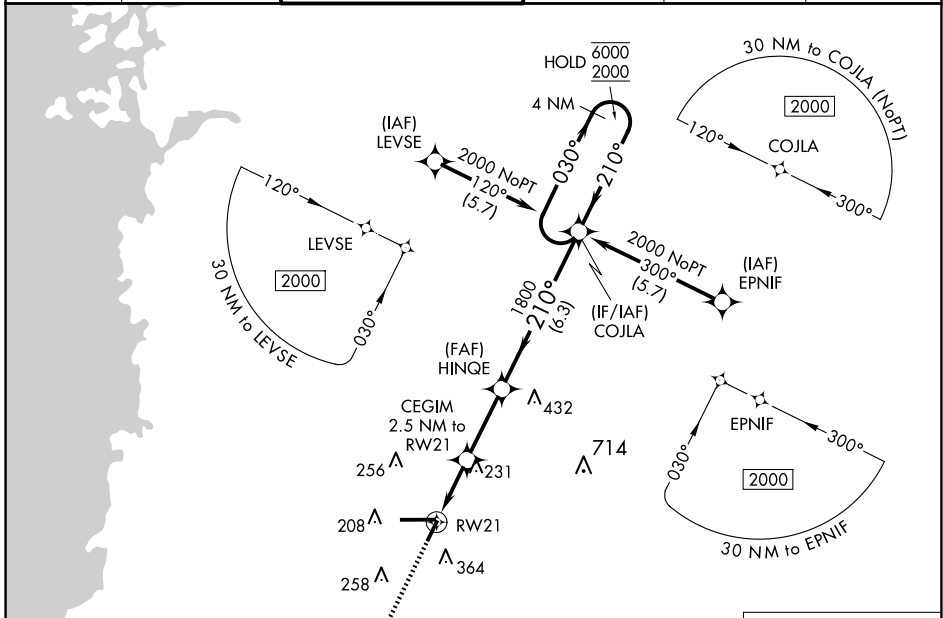
APP CRS	Rwy Idg	4200
210°	TDZE	69
	Apt Elev	76

RNAV (GPS) RWY 21

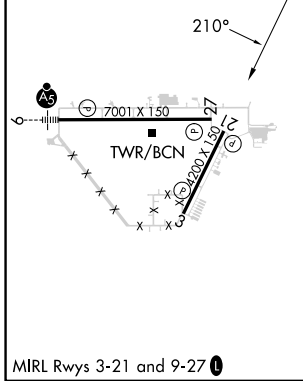
BROOKSVILLE-TAMPA BAY RGNL (BKV)

RNP APCH - GPS.		MISSED APPROACH: Climb to 2000 direct MUCRO and hold.			
 Rwy 21 helicopter visibility reduction below 3/4 SM NA.					

ASOS 134.725	TAMPA APP CON 125.3 316.05	BROOKSVILLE TOWER ★ 118.55 (CTAF) 0	GND CON 121.4	CLNC DEL 119.125 (When twr closed)	UNICOM 123.0
-----------------	-------------------------------	--	------------------	--	-----------------



ELEV 76	TDZE 69
---------	---------



2000 MUCRO		4 NM Holding Pattern	
↑		COJLA	
HINGE		HINGE	
CEGIM 2.5 NM to RWY 21		HINGE	
1.2 NM to RWY 21		HINGE	
RWY 21		HINGE	
900		HINGE	
1.2		HINGE	
1.3		HINGE	
2.8 NM		HINGE	
6.3 NM		HINGE	
030° → 6000		HINGE	
← 210° 2000		HINGE	
CATEGORY	A	B	C
LNAV MDA	500-1	431 (500-1)	500-1 1/4 431 (500-1 1/4)

SE-3, 15 MAY 2025 to 12 JUN 2025

SE-3, 15 MAY 2025 to 12 JUN 2025