

APP CRS	Rwy Idg	2998
059°	TDZE	5
	Apt Elev	5

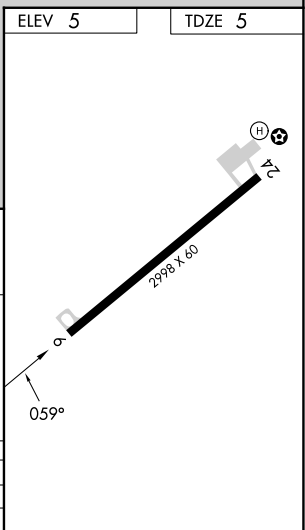
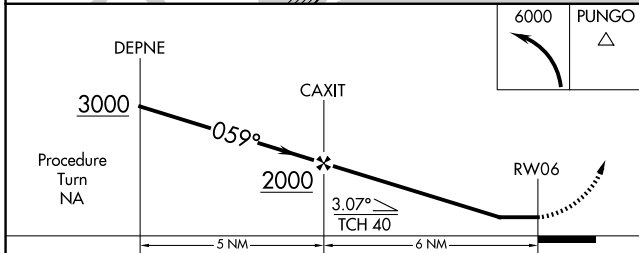
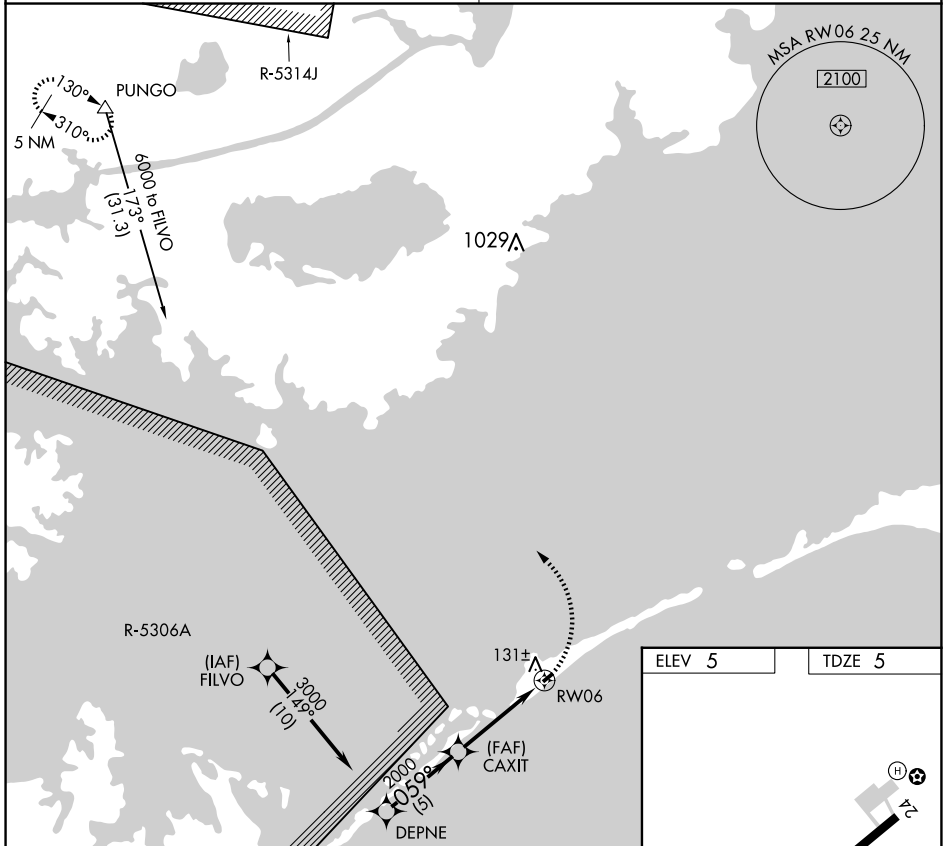
RNAV (GPS) RWY 6

OCRACOKE ISLAND (W95)

NA Procedure NA at night. Use Hatters altimeter setting, when not received procedure NA. DME/DME RNP-0.3 NA. Helicopter visibility reduction below 1 SM NA.

MISSED APPROACH: Climbing left turn to 6000 direct PUNGO WP and hold.

CHERRY POINT APP CON 119.75 360.775	CTAF 122.9
---	----------------------



CATEGORY	A	B	C	D
LNNAV MDA	500-1	495 (500-1)		NA
CIRCLING	560-1	555 (600-1)		NA

SE-2, 15 MAY 2025 to 12 JUN 2025

SE-2, 15 MAY 2025 to 12 JUN 2025