

APP CRS 158°	Rwy Idg 4499
	TDZE 161
	Apt Elev 160

RNAV (GPS) RWY 15

WILSON INDUSTRIAL AIR CENTER (W03)

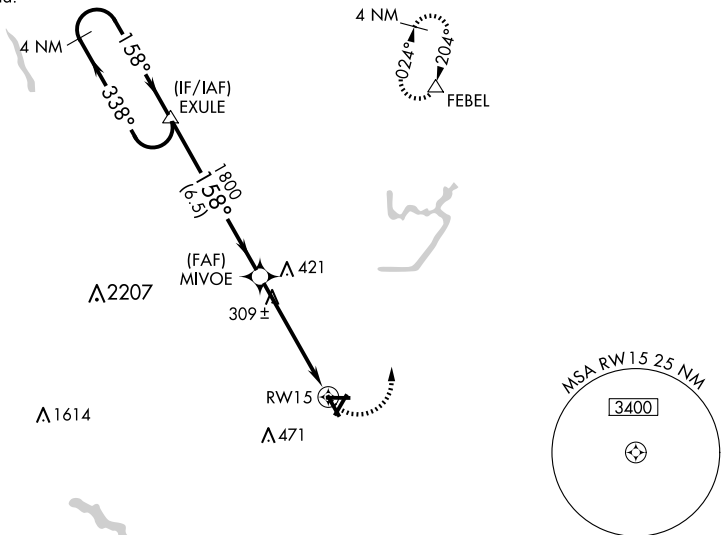
▽ DME/DME RNP-0.3 NA. Procedure NA at night. Visibility reduction by helicopters NA. Obtain local altimeter setting on CTAF; when not received use Rocky Mount altimeter setting.

△ NA

MISSED APPROACH: Climbing left turn to 2500 direct FEBEL and hold.

WASHINGTON CENTER 123.85 279.65	UNICOM 123.0 (CTAF) 0
---	---------------------------------

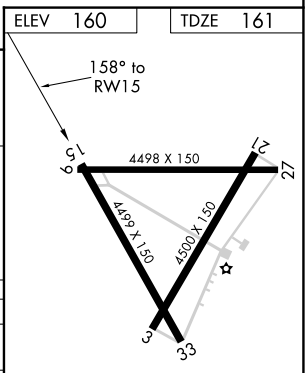
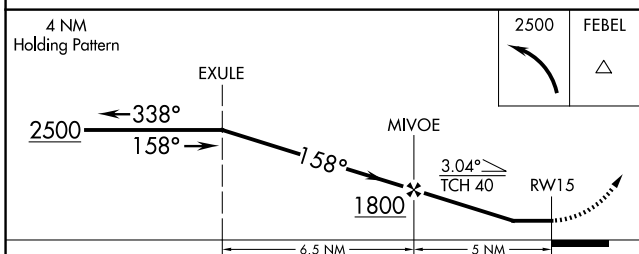
NoPT for arrival at EXULE on V194-310 eastbound.



SE-2, 15 MAY 2025 to 12 JUN 2025

SE-2, 15 MAY 2025 to 12 JUN 2025

ELEV 160	TDZE 161
----------	----------



CATEGORY	A	B	C	D
RNAV MDA	560-1 399 (400-1)			560-1¼ 399 (400-1¼)
CIRCLING	660-1	500 (500-1)	780-1¾ 620 (700-1¾)	780-2 620 (700-2)
ROCKY MOUNT ALTIMETER SETTING MINIMUMS				
RNAV MDA	580-1 419 (500-1)		580-1¼ 419 (500-1¼)	
CIRCLING	680-1	520 (600-1)	800-1¾ 640 (700-1¾)	800-2 640 (700-2)

REIL Rwy 3 and 21 0
MIRL Rwy 3-21 0