

LOM VU <b>346</b>	APP CRS <b>224°</b>	Rwy Idg <b>5500</b> TDZE <b>584</b> Apt Elev <b>609</b>
----------------------	------------------------	---

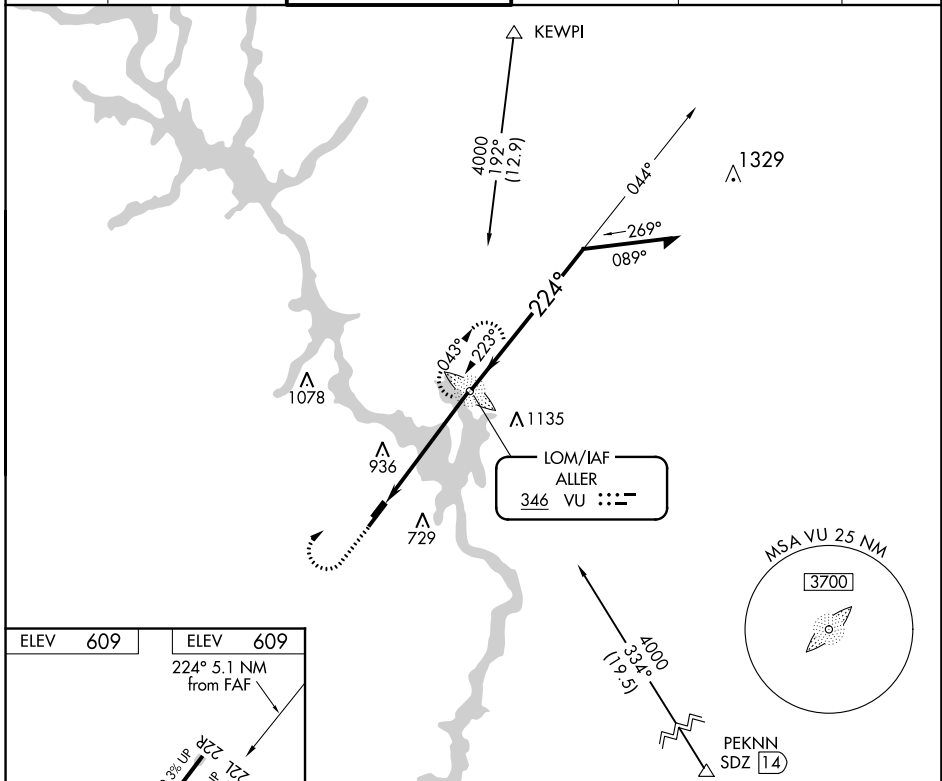
# NDB RWY 22L

STANLY COUNTY (VUJ)

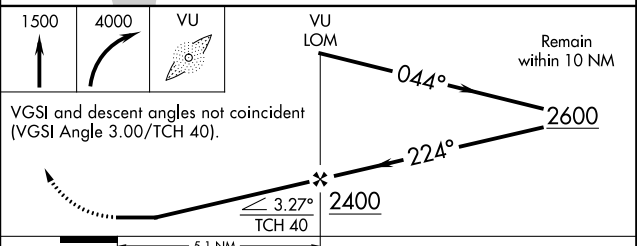
**ASR/PAR** Circling to Rwy 4L/22R NA at night. When local altimeter setting not received, use Asheboro altimeter setting and increase all MDA 60 feet; increase S-22L Cats C and D, and Circling Cats C and D visibility ¼ mile.

**MISSED APPROACH:** Climb to 1500 then climbing right turn to 4000 direct ALLER LOM and hold, continue climb-in-hold to 4000.

ATIS <b>128.175</b>	CHARLOTTE APP CON <b>128.32 307.8</b>	STANLY COUNTY TOWER* <b>126.275 (CTAF) 291.9</b>	GND CON <b>121.75 254.375</b>	CLNC DEL <b>121.75 254.375</b>	UNICOM <b>123.0</b>
------------------------	--	---	----------------------------------	-----------------------------------	------------------------



ELEV 609	ELEV 609
224° 5.1 NM from FAF	
22L 228 (M 3.0°) (T 0.0°)	
TWR	
3500 x 75	
5500 x 100	
653 ±	
4R	
REIL Rwy 4R and 22L	
MIRL Rwy 4R-22L and 4L-22R	
FAF to MAP 5.1 NM	
Knots	60 90 120 150 180
Min:Sec	5:06 3:24 2:33 2:02 1:42



CATEGORY	A	B	C	D
S-22L	1240-1 656 (700-1)		1240-1¾ 656 (700-1¾)	1240-2 656 (700-2)
CIRCLING	1260-1 651 (700-1)		1260-1¾ 651 (700-1¾)	1260-2 651 (700-2)

SE-2: 04 JAN 2018 to 01 FEB 2018

SE-2: 04 JAN 2018 to 01 FEB 2018