

KNIGHTS ONE DEPARTURE

AWOS-3
128.175
CLNC DEL
121.75 254.375
GND CON
121.75 254.375
STANLEY COUNTY TOWER★
126.275 (CTAF) 291.9
UNICOM
123.0
CHARLOTTE DEP CON
128.325 308.7

TAKEOFF MINIMUMS

Rwys 4, 22R: NA.

Rwy 22L: Standard.

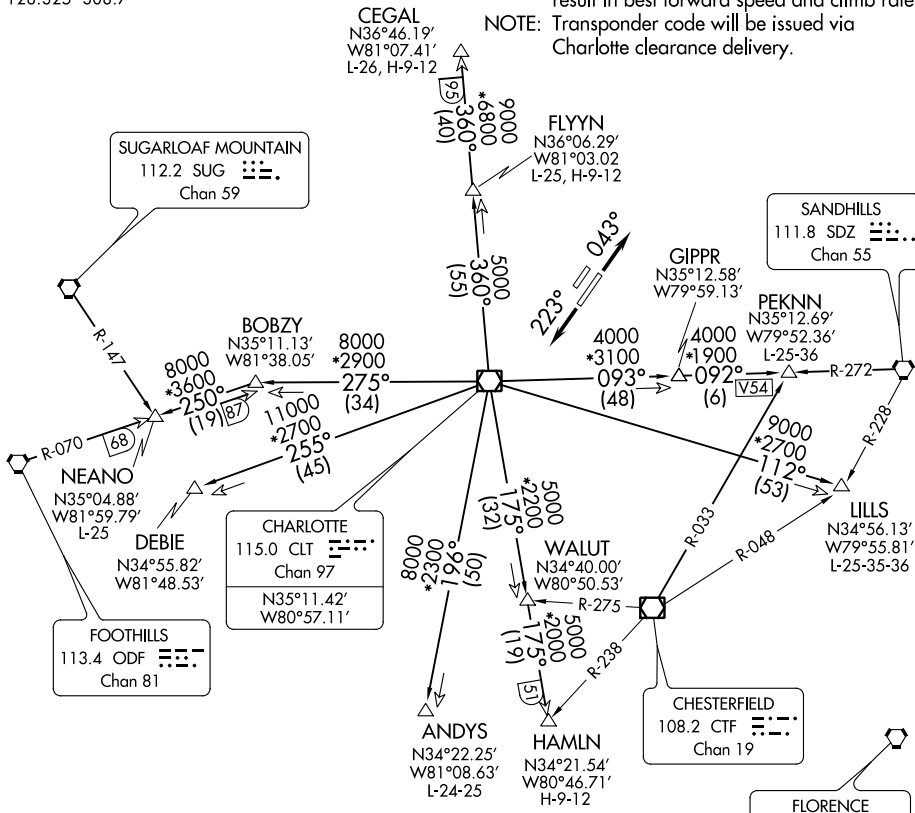
Rwy 4R: 300-1½ or standard with minimum climb of 276' per NM to 1000.

**TOP ALTITUDE:
3000**

- NOTE: For propeller aircraft only.
- NOTE: RADAR and DME required.
- NOTE: Turboprops: Operate in a manner that will result in best forward speed and climb rate.
- NOTE: Transponder code will be issued via Charlotte clearance delivery.

SE-2, 08 NOV 2018 to 06 DEC 2018

SE-2, 08 NOV 2018 to 06 DEC 2018



- ANDYS TRANSITION: Expect vectors to intercept CLT R-196 to ANDYS.
- CEGAL TRANSITION: Expect vectors to intercept CLT R-360 to CEGAL.
- DEBIE TRANSITION: Expect vectors to intercept CLT R-255 to DEBIE.
- FLYYN TRANSITION: Expect vectors to intercept CLT R-360 to FLYYN.
- HAMLIN TRANSITION: Expect vectors to intercept CLT R-175 to HAMLIN.
- LILLS TRANSITION: Expect vectors to intercept CLT R-112 to LILLS.
- NEANO TRANSITION: Expect vectors to intercept CLT R-275 to BOBZY then ODF R-070 to NEANO.
- PEKNN TRANSITION: Expect vectors to intercept CLT R-093 to GIPPR then SDZ R-272 to PEKNN.

NOTE: Chart not to scale.

(NARRATIVE ON FOLLOWING PAGE)

KNIGHTS ONE DEPARTURE

(KNI1.KNI) 17AUG17

ALBEMARLE, NORTH CAROLINA
STANLY COUNTY (VUJ)