

BOBZY THREE DEPARTURE (RNAV)

TOP ALTITUDE:
3000

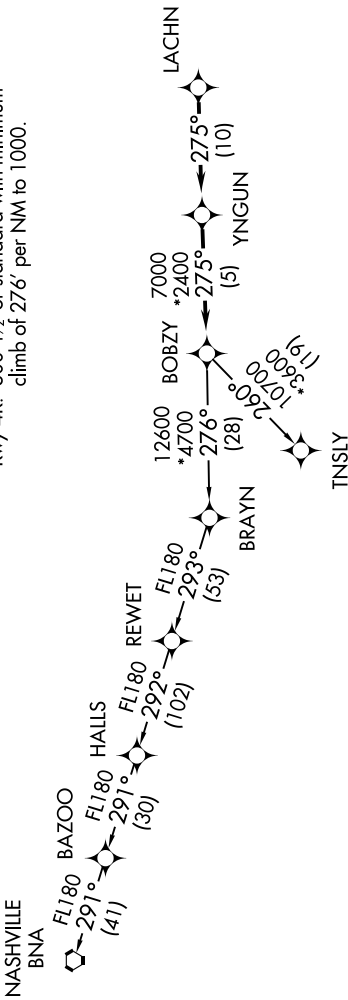
TAKEOFF MINIMUMS

Rwys 4L, 22R: NA.

Rwy 22L: Standard.

Rwy 4R: 300-1/2 or standard with minimum climb of 276' per NM to 1000.

ATIS 128.175
CLNC DEL 121.75 254.375
GND CON 121.75 254.375
STANLY COUNTY TOWER * 126.275 (CTAF) 291.9
UNICOM 123.0
CHARLOTTE DEP CON 128.325 307.8



DEPARTURE ROUTE DESCRIPTION

Climb on heading assigned by ATC, expect RADAR vectors to LACHN, then on depicted route to BOBZY, then on assigned transition. Maintain 3000. Expect clearance to filed altitude within 10 minutes after departure.

NAASHVILLE TRANSITION (BOBZY3.BNA)
TNSLY TRANSITION (BOBZY3.TNSLY)

- NOTE: For Turbojets only.
- NOTE: DME/DME/IRU or GPS required.
- NOTE: RNAV 1.
- NOTE: RADAR required.
- NOTE: If unable to accept climb rates, advise ATC on initial contact.
- NOTE: Upon reaching 10000 MSL, accelerate to and maintain 280K, if unable advise ATC.

NOTE: Chart not to scale.