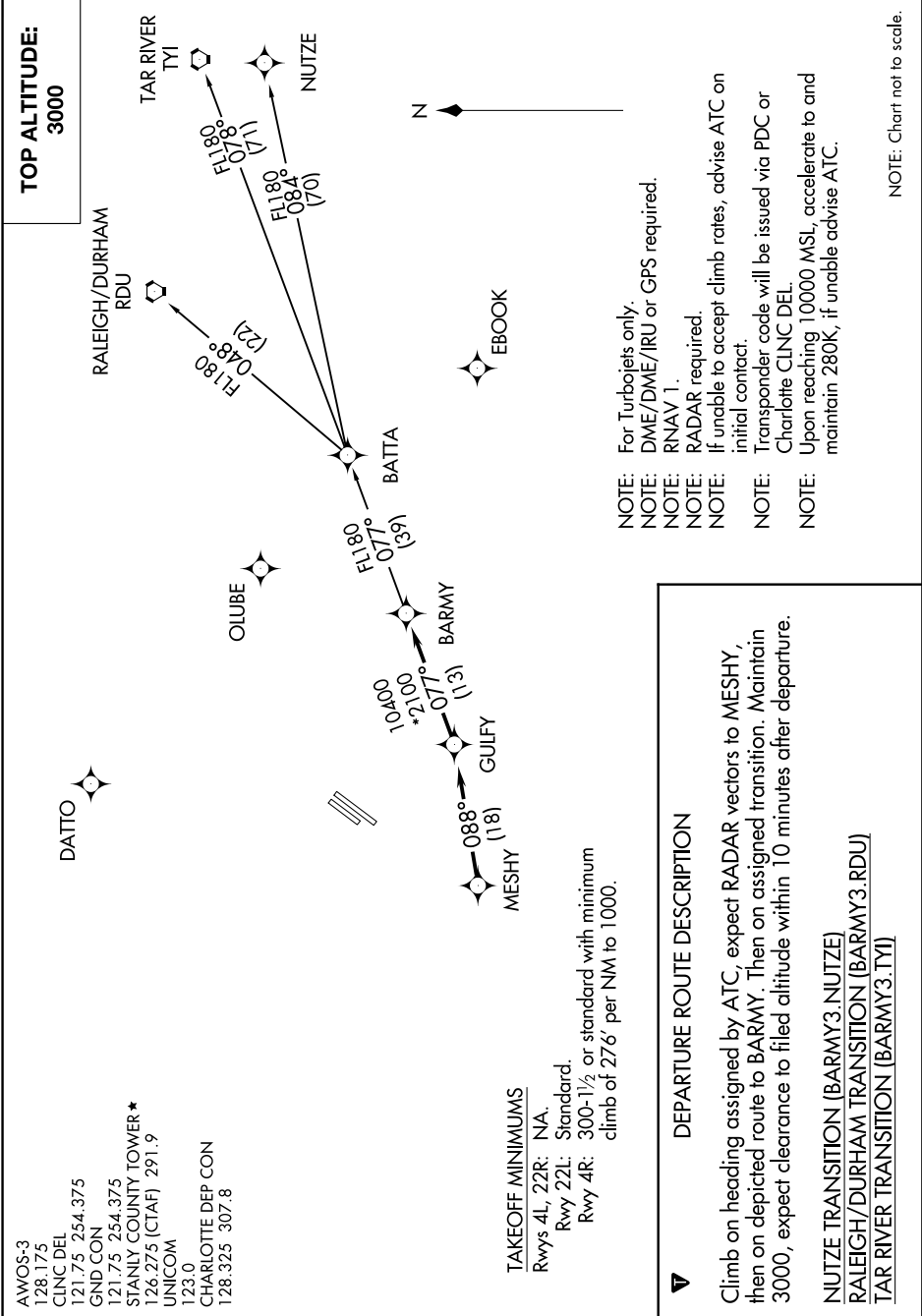


BARMY THREE DEPARTURE (RNAV)

SE-2: 08 NOV 2018 to 06 DEC 2018



AWOS-3
128.175
CLNC DEL
121.75 254.375
GND CON
121.75 254.375
STANLY COUNTY TOWER ★
126.275 (CTAF) 291.9
UNICOM
123.0
CHARLOTTE DEP CON
128.325 307.8

TAKEOFF MINIMUMS
Rwys 4L, 22R: NA.
Rwy 22L: Standard.
Rwy 4R: 300-1½ or standard with minimum
climb of 276' per NM to 1000.

DEPARTURE ROUTE DESCRIPTION

▼ Climb on heading assigned by ATC, expect RADAR vectors to MESHY, then on depicted route to BARMY. Then on assigned transition. Maintain 3000, expect clearance to filed altitude within 10 minutes after departure.

NUTZE TRANSITION (BARMY3.NUTZE)
RALEIGH/DURHAM TRANSITION (BARMY3.RDU)
TAR RIVER TRANSITION (BARMY3.TYI)

- NOTE: For Turbojets only.
- NOTE: DME/DME/IRU or GPS required.
- NOTE: RNAV 1.
- NOTE: RADAR required.
- NOTE: If unable to accept climb rates, advise ATC on initial contact.
- NOTE: Transponder code will be issued via PDC or Charlotte CLNC DEL.
- NOTE: Upon reaching 10000 MSL, accelerate to and maintain 280K, if unable advise ATC.

NOTE: Chart not to scale.

SE-2: 08 NOV 2018 to 06 DEC 2018

BARMY THREE DEPARTURE (RNAV)