

LOC/DME I-SPA 109.1 Chan 28	APP CRS 047°	Rwy Idg 5852 TDZE 802 Apt Elev 802
--	------------------------	---

ILS or LOC RWY 5

SPARTANBURG DOWNTOWN MEML/SIMPSON FLD (SPA)

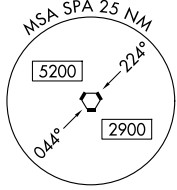
DME required.	MALS R AS	MISSED APPROACH: Climb to 1300 then climbing left turn to 3000 direct SPA VORTAC and hold, continue climb-in-hold to 3000.
V A For inop ALS, increase S-LOC 5 Cats C/D visibility to 1 SM.		

AWOS-3 133.925	GREER APP CON * 119.4 350.2	CLNC DEL 120.55	UNICOM 123.0 (CTAF) U
--------------------------	---------------------------------------	---------------------------	--

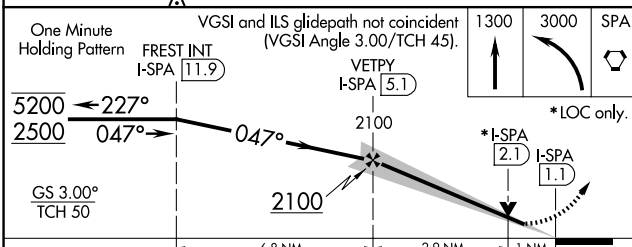
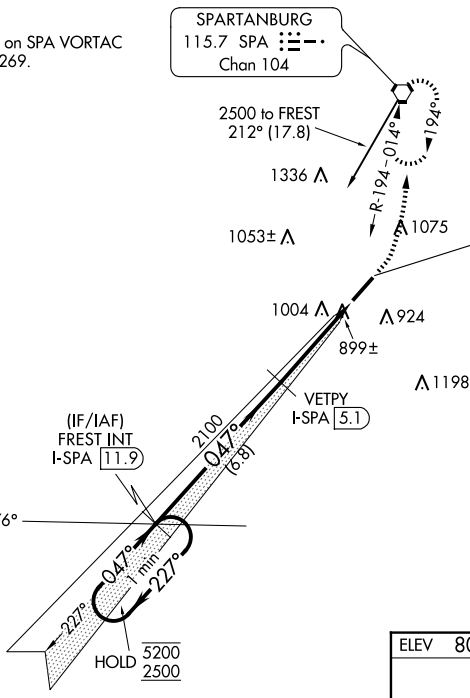
Procedure NA for arrival on SPA VORTAC airway radials 231 CW 269.

SPARTANBURG
115.7 SPA **⋮⋮⋮**
Chan 104

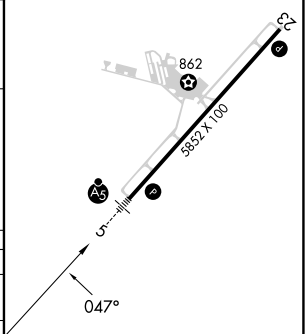
LOCALIZER **109.1**
I-SPA **⋮⋮⋮**
Chan 28



LOM
JUDKY
521 GM **⋮⋮⋮**



ELEV 802	D TDZE 802
----------	-------------------



CATEGORY	A	B	C	D
S-ILS 5		1002- ³ / ₄	200 (200- ³ / ₄)	
S-LOC 5		1160- ³ / ₄	358 (400- ³ / ₄)	
C CIRCLING	1320-1	518 (600-1)	1380-1 ¹ / ₂ 578 (600-1 ¹ / ₂)	1420-2 618 (700-2)

HIRL Rwy 5-23 **U**
REIL Rwy 23 **U**

ILS or LOC RWY 5

SE-2, 15 MAY 2025 to 12 JUN 2025

SE-2, 15 MAY 2025 to 12 JUN 2025