

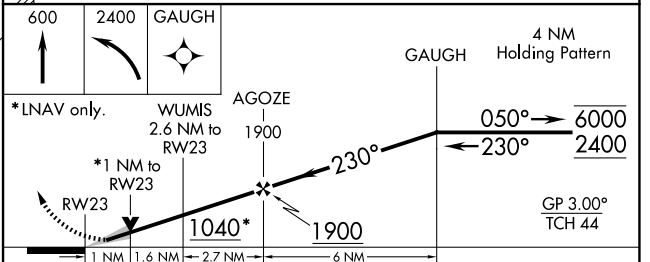
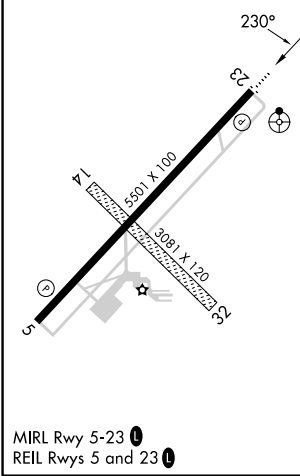
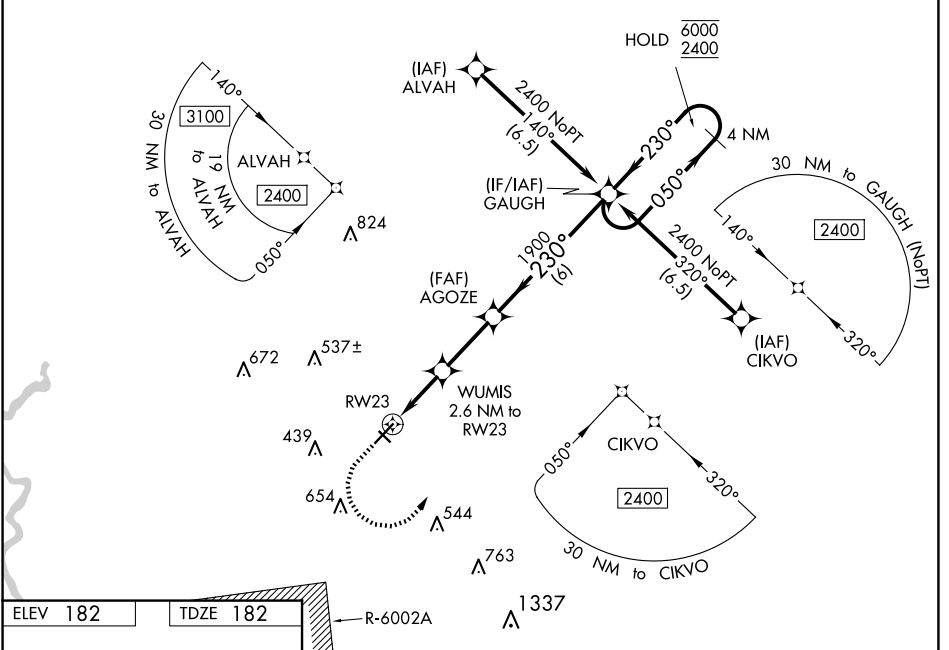
WAAS CH <b>58141</b> <b>W23A</b>	APP CRS <b>230°</b>	Rwy Idg <b>5501</b> TDZE <b>182</b> Apt Elev <b>182</b>
--	------------------------	---

# RNAV (GPS) RWY 23

SUMTER (SMS)

RNP APCH.	ODALS 	MISSED APPROACH: Climb to 600 then climbing left turn to 2400 direct GAUGH and hold.
Circling NA to Rwsy 14 and 32. For uncompensated Baro-VNAV systems, LNAV/VNAV NA below -1.5°C or above 54°C. Inop table does not apply to LPV all Cats. For inop ALS increase LNAV/VNAV Cat A/B visibility to 7/8 SM.		

AWOS-3 <b>118.075</b>	SHAW APP CON* <b>125.4</b>	UNICOM <b>122.7 (CTAF)</b>
--------------------------	-------------------------------	-------------------------------



CATEGORY	A	B	C	D
LPV DA		382-3/4	200 (200-3/4)	
LNAV/VNAV DA		460-3/4	278 (300-3/4)	
LNAV MDA	540-3/4	358 (400-3/4)	540-7/8	358 (400-7/8)
<input checked="" type="checkbox"/> CIRCLING	600-1 418 (500-1)	680-1 498 (500-1)	1000-2 1/2 818 (900-2 1/2)	1000-2 3/4 818 (900-2 3/4)

SE-2, 15 MAY 2025 to 12 JUN 2025

SE-2, 15 MAY 2025 to 12 JUN 2025