

WAAS CH 70435 W22A	APP CRS 222°	Rwy Idg TDZE Apt Elev	6900 152 158
--	------------------------	-----------------------------	---

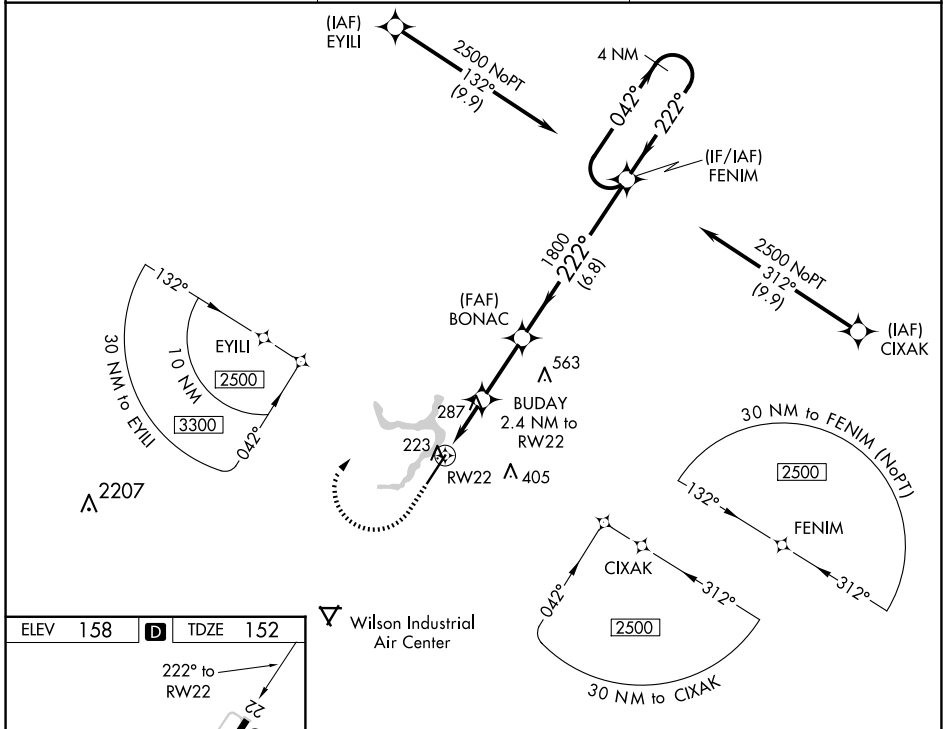
RNAV (GPS) RWY 22

ROCKY MOUNT/WILSON RGNL (R.WI)

⚠ For uncompensated Baro-VNAV systems, LNAV/VNAV NA below -10°C (14°F) or above 54°C (130°F). DME/DME RNP-0.3 NA. Baro-VNAV and VDP NA when using Wayne Exec Jetport altimeter setting. When local altimeter setting not received, use Wayne Exec Jetport altimeter setting and increase all DA 59 feet and all visibilities ¼ mile; increase all MDA 60 feet and LNAV Cats C/D and Circling Cat C visibility ¼ mile. Rwy 22 helicopter visibility reduction below ¾ SM NA.

MISSED APPROACH: Climb to 1000 then climbing right turn to 2500 direct FENIM and hold.

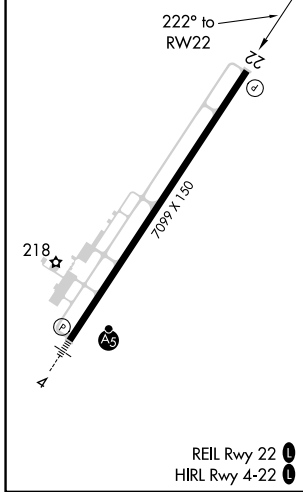
ASOS 118.875	WASHINGTON CENTER 123.85 279.65	UNICOM 123.05 (CTAF) 0
------------------------	---	----------------------------------



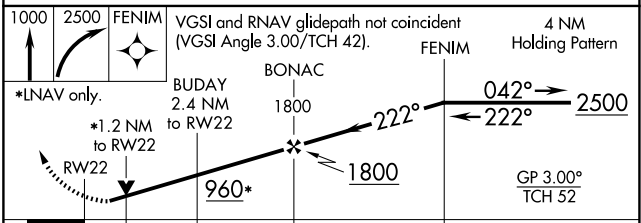
SE-2, 15 MAY 2025 to 12 JUN 2025

SE-2, 15 MAY 2025 to 12 JUN 2025

ELEV 158	D	TDZE 152
----------	----------	----------



⚠ Wilson Industrial Air Center



1000	2500	FENIM	VGSI and RNAV glidepath not coincident (VGSI Angle 3.00/TCH 42).		4 NM Holding Pattern
*LNAV only.			BUDAY 2.4 NM to RWY 22	BONAC 1800	FENIM 2500
RWY 22			*1.2 NM to RWY 22	1800	GP 3.00° TCH 52
1.2			1.2 NM	2.6 NM	6.8 NM
CATEGORY	A	B	C	D	
LPV DA		436-7/8	284 (300-7/8)		
LNAV/VNAV DA		513-1 1/8	361 (400-1 1/8)		
LNAV MDA	560-1	408 (500-1)	560-1 1/8	408 (500-1 1/8)	
C CIRCLING	600-1	620-1	720-1 1/2	760-2	
	442 (500-1)	462 (500-1)	562 (600-1 1/2)	602 (700-2)	