

WAAS CH 56513 W04A	APP CRS 042°	Rwy Idg TDZE Apt Elev	7099 158 158
--	------------------------	-----------------------------	---

RNAV (GPS) RWY 4

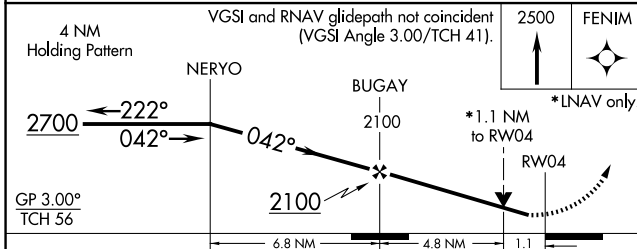
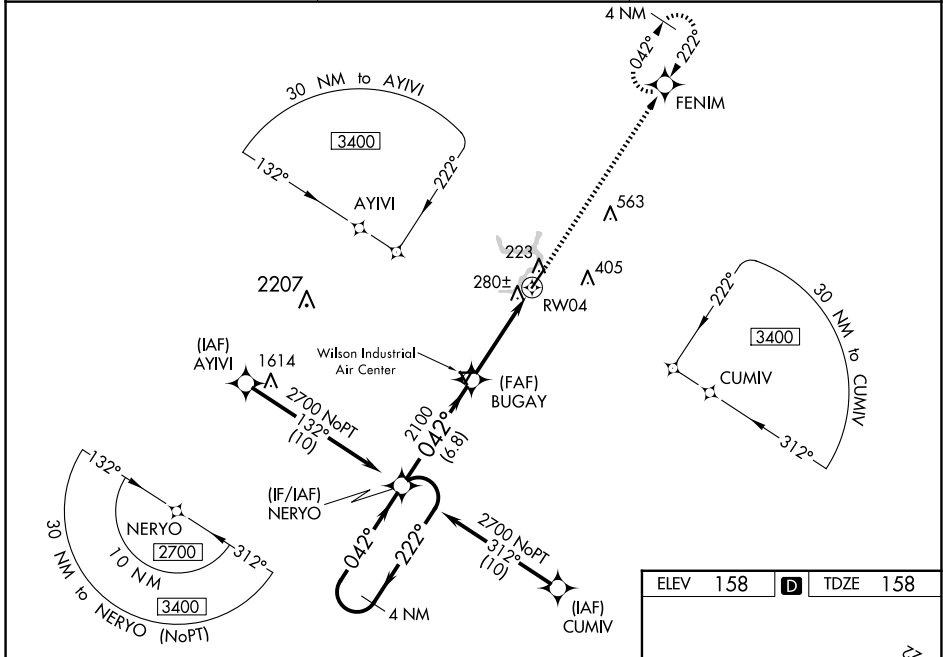
ROCKY MOUNT/WILSON RGNL (R.WI)

⚠ Inop table does not apply to LPV when using local altimeter setting. For uncompensated Baro-VNAV systems, LNAV/VNAV NA below -10°C (14°F) or above 54°C (130°F).
⚠ When local altimeter setting not received, use Wayne Exec Jetport altimeter setting and increase LPV DA to 467; increase LNAV/VNAV DA to 601 and all Cats visibility ¼ mile; increase all MDA 60 feet and LNAV Cats C/D and Circling Cat C visibility ¼ mile.
 For inop MALSR, increase LNAV Cat A/B visibility to 1 mile. DME/DME RNP-0.3 NA.
 Baro-VNAV and VDP NA when using Wayne Exec Jetport altimeter setting.
 Rwy 4 helicopter visibility reduction below ¼ SM NA.

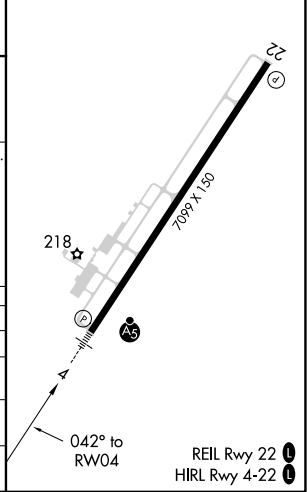
MALSR

MISSED APPROACH:
Climb to 2500 direct FENIM and hold.

ASOS 118.875	WASHINGTON CENTER 123.85 279.65	UNICOM 123.05 (CTAF) ①
------------------------	---	----------------------------------



ELEV 158	D	TDZE 158
----------	----------	----------



CATEGORY	A	B	C	D
LPV DA		408-¾	250 (300-¾)	
LNAV/VNAV DA		542-¾	384 (400-¾)	
LNAV MDA		560-¾	402 (500-¾)	
C CIRCLING	600-1 442 (500-1)	620-1 462 (500-1)	720-1½ 562 (600-1½)	760-2 602 (700-2)

SE-2, 15 MAY 2025 to 12 JUN 2025

SE-2, 15 MAY 2025 to 12 JUN 2025