


APP CRS	Rwy Idg	7500
054°	TDZE	420
	Apt Elev	435

RNAV (RNP) Z RWY 5R

RALEIGH-DURHAM INTL (RDU)

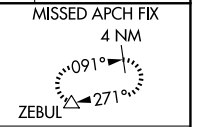
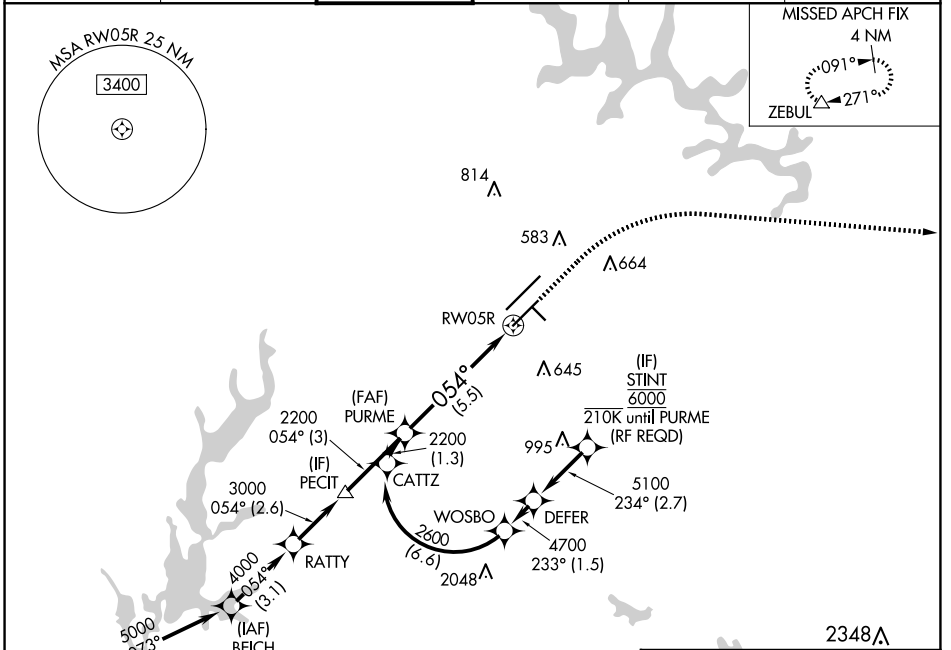
RNP AR APCH-GPS.

▼ For uncompensated Baro-VNAV systems, procedure NA below -12°C or above 54°C. For inop ALS, increase RNP 0.30 all Cats visibility to RVR 4500. Simultaneous approach authorized, except for arrivals at STINT.

MALSR 

MISSED APPROACH: Climb to 1000 then climbing right turn to 2600 direct ZEBUL and hold.

D-ATIS	RALEIGH APP CON	RALEIGH TOWER	GND CON	CLNC DEL	CPDLC
123.8	127.675 307.9	127.45 257.8	121.9 348.6	120.1	



SE-2, 15 MAY 2025 to 12 JUN 2025

SE-2, 15 MAY 2025 to 12 JUN 2025

VGS1 and RNAV glidepath not coincident (VGS1 Angle 3.00/TCH 62).

1000

2600

ZEBUL Δ

See planview for multiple IF locations.

PURME 2200

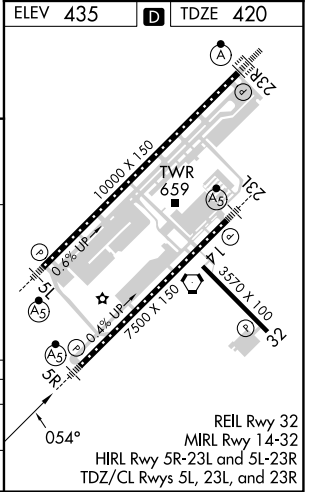
2200

054°

RW05R

GP 3.00° TCH 56

5.5 NM



CATEGORY	A	B	C	D
RNP 0.30 DA	721/24 301 (400-½)			

AUTHORIZATION REQUIRED