

WAAS CH 48813 W05A	APP CRS 054°	Rwy Idg 10000 TDZE 384 Apt Elev 435
--	------------------------	--


RNAV (GPS) Y RWY 5L

RALEIGH-DURHAM INTL (RDU)

RNP APCH-GPS.

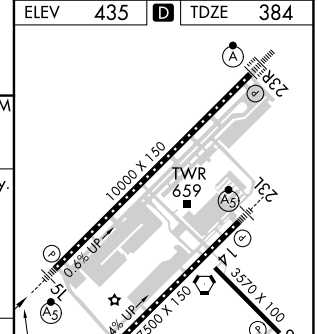
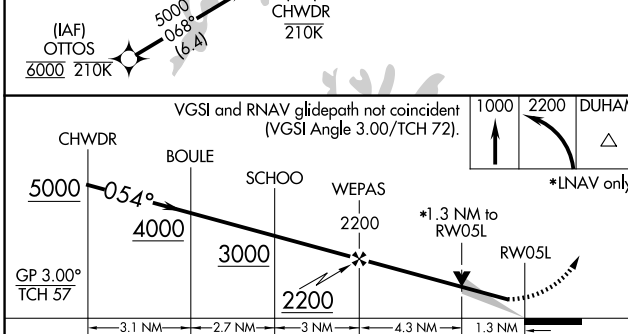
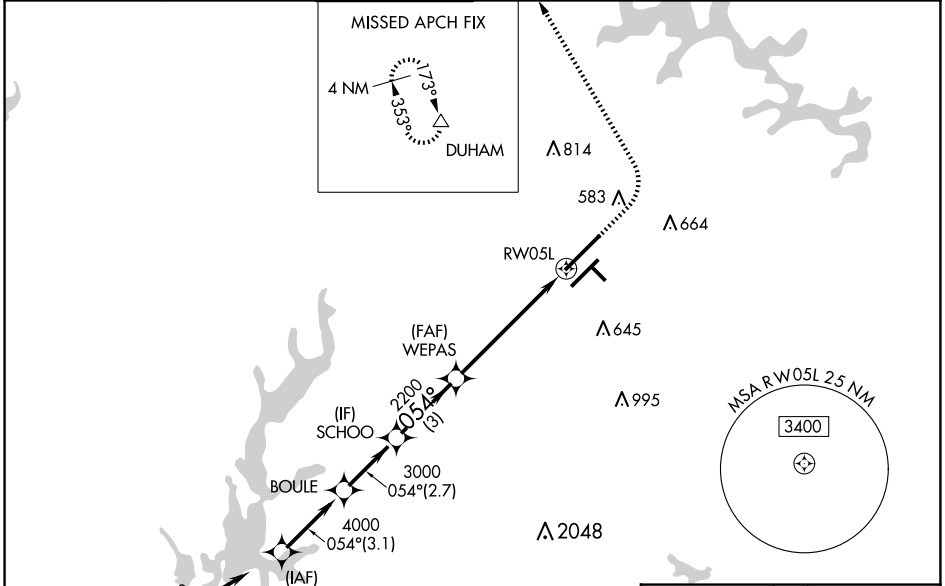
⚠ Simultaneous approach authorized. LNAV procedure NA during simultaneous operations. For uncompensated Baro-VNAV systems, LNAV/VNAV NA below -12°C or above 54°C. For inop ALS, increase LNAV/VNAV all Cats visibility to RVR 5500. Use of FD or AP required during simultaneous operations.

MALSR



MISSED APPROACH: Climb to 1000 then climbing left turn to 2200 direct DUHAM and hold.

D-ATIS 123.8	RALEIGH APP CON 127.675 307.9	RALEIGH TOWER 127.45 257.8	GND CON 121.9 348.6	CLNC DEL 120.1	CPDLC
------------------------	---	--------------------------------------	-------------------------------	--------------------------	-------



CATEGORY	A	B	C	D
LPV DA		598/18	214 (200-1/2)	
LNAV/VNAV DA		748/35	364 (400-5/8)	
LNAV MDA	840/24	456 (500-1/2)	840/45	456 (500-7/8)
C CIRCLING	960-1	525 (600-1)	1020-1 1/2 585 (600-1/2)	1180-2 1/2 745 (800-2/2)

REIL Rwy 32
MIRL Rwy 14-32
HIRL Rwys 5R-23L and 5L-23R
TDZ/CL Rwys 23R, 23L and 5L

SE-2, 15 MAY 2025 to 12 JUN 2025

SE-2, 15 MAY 2025 to 12 JUN 2025