

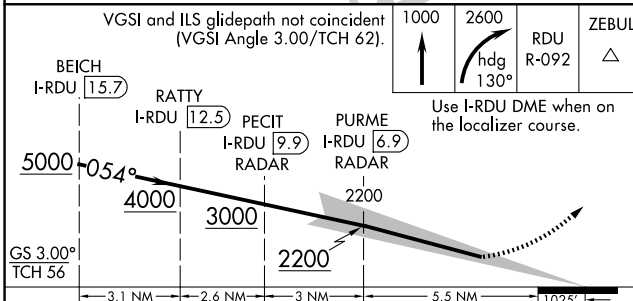
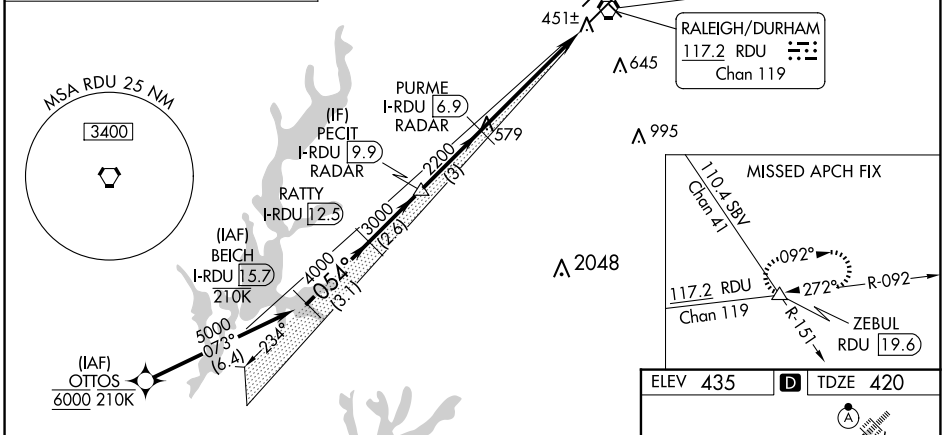
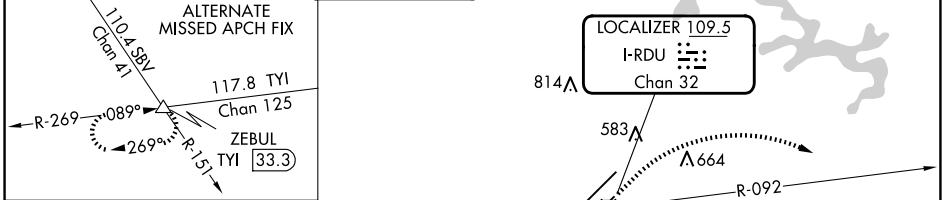
LOC/DME I-RDU <b>109.5</b> Chan 32	APP CRS <b>054°</b>	Rwy Idg <b>7500</b> TDZE <b>420</b> Apt Elev <b>435</b>
--	------------------------	---

# ILS RWY 5R (SA CAT I & II)

RALEIGH-DURHAM INTL (RDU)

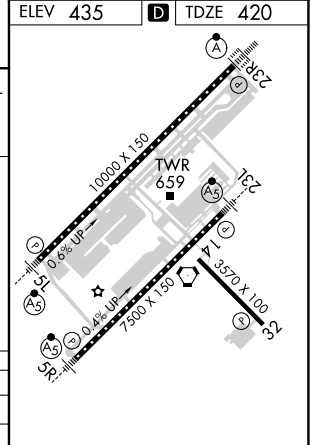
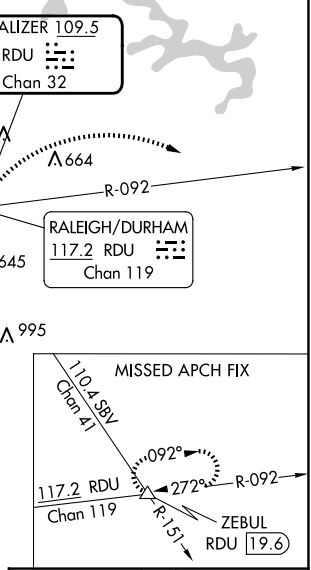
RNAV 1-DME/DME/IRU or GPS or RADAR required for procedure entry.  Simultaneous approach authorized. SA CAT I: Requires specific OPSPEC, MSPEC or LOA approval and use of HUD to DH. SA CAT II: Reduced lighting: Requires specific OPSPEC, MSPEC or LOA approval and use of autoland or HUD to touchdown.		MALSR 	MISSED APPROACH: Climb to 1000 then climbing right turn to 2600 on heading 130° and on RDU VORTAC R-092 to ZEBUL INT/RDU 19.6 DME and hold.
---	--	-----------	---

D-ATIS <b>123.8</b>	RALEIGH APP CON <b>127.675 307.9</b>	RALEIGH TOWER <b>127.45 257.8</b>	GND CON <b>121.9 348.6</b>	CLNC DEL <b>120.1</b>	CPDLC
------------------------	---	--------------------------------------	-------------------------------	--------------------------	-------



CATEGORY	A	B	C	D
S-ILS 5R	SA CAT I	RA 230/14	150	DA 570
S-ILS 5R	SA CAT II	RA 183/12	100	DA 520

## SA CATEGORY I & II ILS SPECIAL AIRCREW & AIRCRAFT CERTIFICATION REQUIRED



REIL Rwy 32  
MIRL Rwy 14-32  
HIRL Rwys 5R-23L and 5L-23R  
TDZ/CL Rwys 23R, 23L and 5L

SE-2, 15 MAY 2025 to 12 JUN 2025

SE-2, 15 MAY 2025 to 12 JUN 2025