

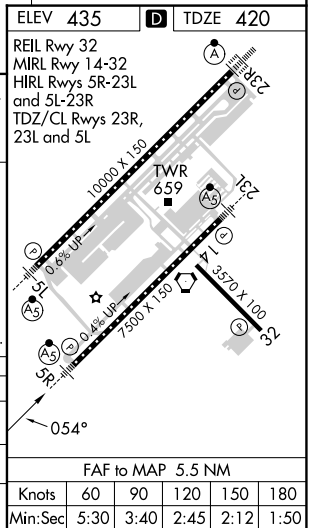
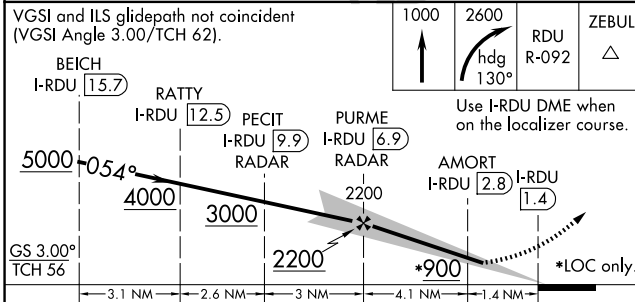
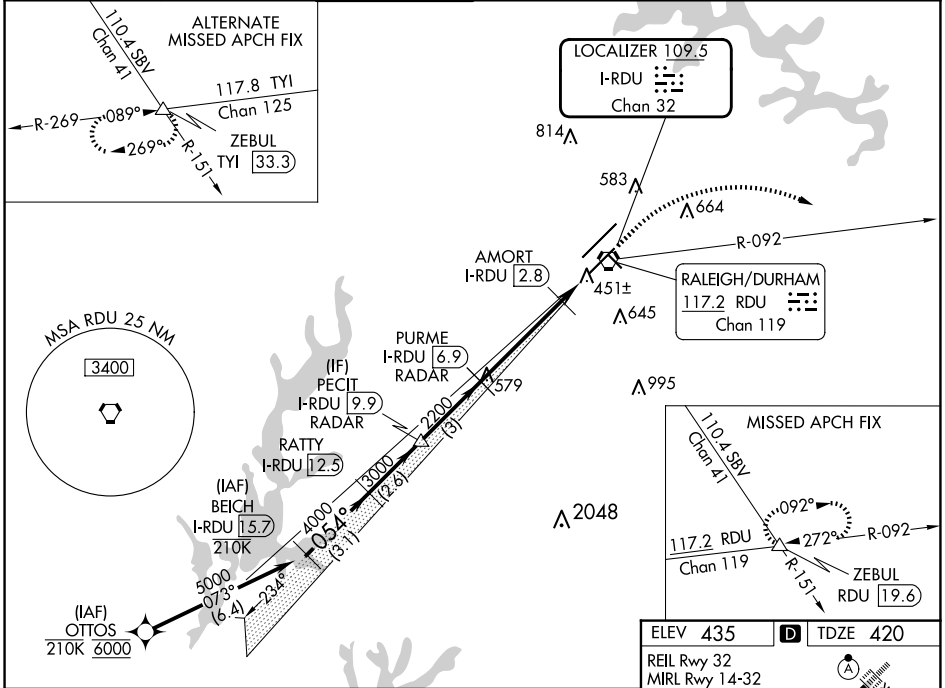
LOC/DME I-RDU	APP CRS	Rwy Idg	7500
109.5	054°	TDZE	420
Chan 32		Apt Elev	435

ILS or LOC RWY 5R

RALEIGH-DURHAM INTL (RDU)

RNAV 1-DME/DME/IRU or GPS or RADAR required for procedure entry. DME or RADAR required for LOC only.		MAISR	MISSED APPROACH: Climb to 1000 then climbing right turn to 2600 on heading 130° and on RDU VORTAC R-092 to ZEBUL INT/ RDU 19.6 DME and hold.
<p>Simultaneous approach authorized.</p> <p># RVR 1800 authorized with use of FD or AP or HUD to DA.</p>			

D-ATIS	RALEIGH APP CON	RALEIGH TOWER	GND CON	CLNC DEL	CPDLC
123.8	127.675 307.9	127.45 257.8	121.9 348.6	120.1	



CATEGORY	A	B	C	D
S-ILS 5R #	620/24		200 (200-½)	
S-LOC 5R	760/24 340 (400-½)		760/26 340 (400-½)	
CIRCLING	960-1 525 (600-1)		1020-1½ 1180-2½ 585 (600-1½) 745 (800-2½)	

SE-2, 15 MAY 2025 to 12 JUN 2025

SE-2, 15 MAY 2025 to 12 JUN 2025