


WAAS CH <b>61016</b> <b>W23A</b>	APP CRS <b>229°</b>	Rwy Idg TDZE Apt Elev	<b>6002</b> <b>101</b> <b>101</b>
--	------------------------	-----------------------------	---

# RNAV (GPS) RWY 23

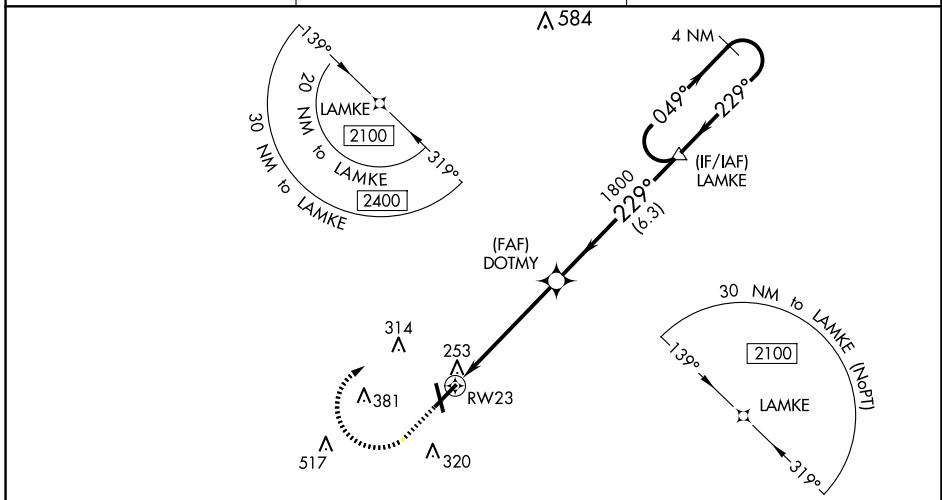
LOWCOUNTRY RGNL (R.BW)

**⚠** For uncompensated Baro-VNAV systems, LNAV/VNAV NA below -15°C (5°F) or above 54°C (130°F). Baro-VNAV and VDP NA when using Charleston AFB/Intl altimeter setting. DME/DME RNP-0.3 NA. Helicopter visibility reduction below 3/4 SM NA. For inop ODALS, increase LNAV/VNAV all Cats visibility to 1 1/4 mile and LNAV Cat D visibility to 1 1/2 mile. When local altimeter setting not received, use Charleston AFB/Intl altimeter setting; increase LPV DA to 379 feet and LNAV/VNAV DA to 542 feet and all MDA 80 feet; increase LNAV/VNAV visibility all Cats, LNAV Cats C/D visibility, and Circling Cat D visibility 1/4 mile; increase Circling Cat C visibility 1/2 mile. For inop ODALS when using Charleston AFB/Intl altimeter setting, increase LPV all Cats visibility to 7/8 mile and LNAV/VNAV all Cats and LNAV Cats C/D visibility to 1 1/2 mile.

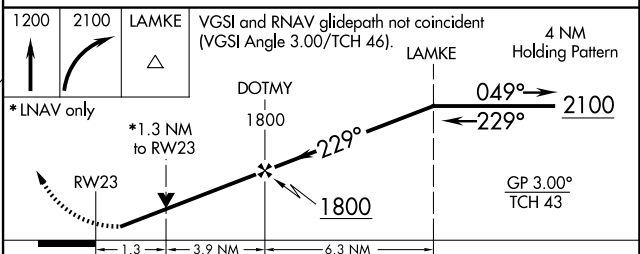
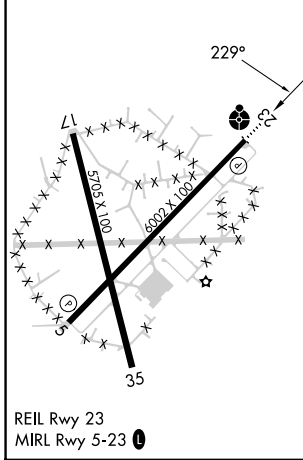
**ODALS** 


**MISSED APPROACH:** Climb to 1200 then climbing right turn to 2100 direct LAMKE and hold.

AWOS-3PT <b>118.725</b>	CHARLESTON APP CON <b>120.7 306.925</b>	UNICOM <b>122.8 (CTAF)</b> 
----------------------------	--	---



ELEV	101	TDZE	101
------	-----	------	-----



CATEGORY	A	B	C	D
LPV DA		301-3/4	200 (200-3/4)	
LNAV/VNAV DA		464-1 1/8	363 (400-1 1/8)	
LNAV MDA	560-3/4	459 (500-3/4)	560-1 1/8	459 (500-1 1/8)
 CIRCLING	620-1 519 (600-1)	640-1 539 (600-1)	700-1 1/2 599 (600-1 1/2)	700-2 599 (600-2)

SE-2, 15 MAY 2025 to 12 JUN 2025

SE-2, 15 MAY 2025 to 12 JUN 2025