

WAAS CH 93616 W17A	APP CRS 171°	Rwy Idg TDZE 93 Apt Elev 101	5705
----------------------------------------	------------------------	--------------------------------------------------	-------------

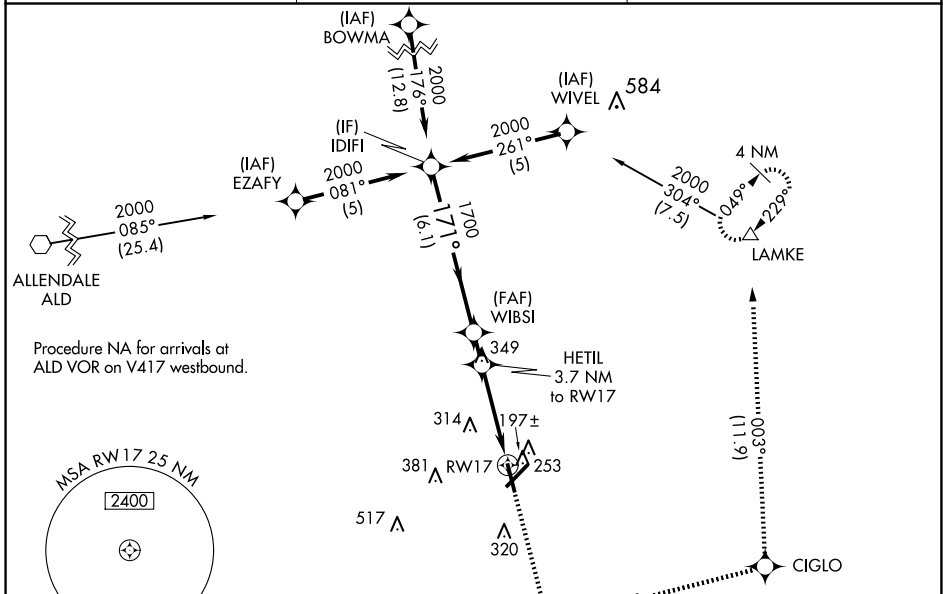
RNAV (GPS) RWY 17

LOWCOUNTRY RGNL (R.B.W)

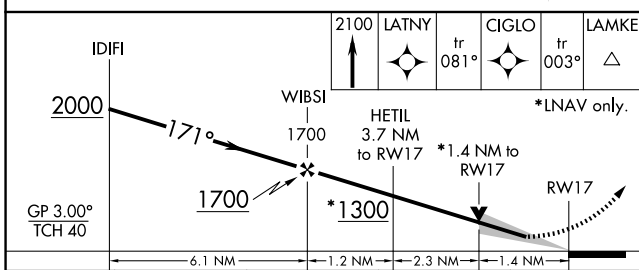
⚠ For uncompensated Baro-VNAV systems, LNAV/VNAV NA below -15°C (5°F) or above 54°C (130°F). Baro-VNAV and VDP NA when using Charleston Intl/AFB altimeter setting.
⚠ DME/DME RNP-0.3 NA. When local altimeter setting not received, use Charleston AFB/Intl altimeter setting: increase LPV DA to 421 feet and LNAV/VNAV DA to 587 feet and all MDA 80 feet; increase LPV visibility all Cats 1/8 mile; increase LNAV/VNAV visibility all Cats, LNAV Cats C/D, and Circling Cat D visibility 1/4 mile; increase Circling Cat C visibility 1/2 mile.

MISSED APPROACH:
 Climb to 2100 direct LATNY and on track 081° to CIGLO and track 003° to LAMKE and hold.

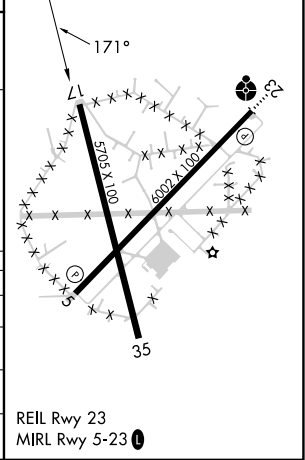
AWOS-3PT 118.725	CHARLESTON APP CON 120.7 306.925	UNICOM 122.8 (CTAF) 0
----------------------------	--------------------------------------------	---------------------------------



ELEV	101	TDZE	93
------	-----	------	----



CATEGORY	A	B	C	D
LPV DA	343-1 250 (300-1)			
LNAV/VNAV DA	508-1 1/2		415 (500-1 1/2)	
LNAV MDA	580-1 487 (500-1)		580-1 3/8 487 (500-1 3/8)	
C CIRCLING	620-1 519 (600-1)	640-1 539 (600-1)	700-1 1/2 599 (600-1 1/2)	700-2 599 (600-2)



SE-2, 15 MAY 2025 to 12 JUN 2025

SE-2, 15 MAY 2025 to 12 JUN 2025