

LOC/DME I-RBW 110.15 Chan 38 (Y)	APP CRS 229°	Rwy ldg TDZE Apt Elev	6002 101 101
-----------------------------------------------	------------------------	-----------------------------	-----------------------------------------

ILS Y or LOC Y RWY 23

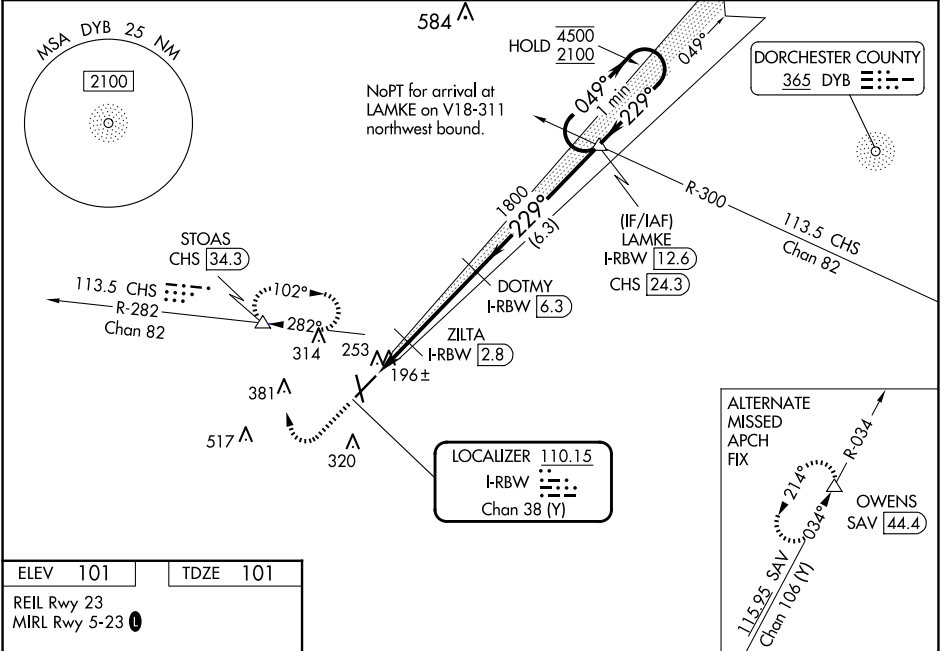
LOWCOUNTRY RGNL (R.B.W)

DME required.

ODALS

MISSED APPROACH: Climb to 700 then climbing right turn to 2000 on heading 360° and CHS VORTAC R-282 to STOAS/CHS VORTAC 34.3 DME and hold, continue climb-in-hold to 2000, or as directed by ATC.

AWOS-3PT 118.725	CHARLESTON APP CON 120.7 306.925	UNICOM 122.8 (CTAF)
----------------------------	--------------------------------------------	-------------------------------



ELEV 101	TDZE 101
REIL Rwy 23 MIRL Rwy 5-23	

229°

35

6002 X 100'

5700 X 100'

5500 X 100'

5300 X 100'

5100 X 100'

4900 X 100'

4700 X 100'

4500 X 100'

4300 X 100'

4100 X 100'

3900 X 100'

3700 X 100'

3500 X 100'

3300 X 100'

3100 X 100'

2900 X 100'

2700 X 100'

2500 X 100'

2300 X 100'

2100 X 100'

1900 X 100'

1700 X 100'

1500 X 100'

1300 X 100'

1100 X 100'

900 X 100'

700 X 100'

500 X 100'

300 X 100'

100 X 100'

FAF to MAP 5.2 NM

Knots	60	90	120	150	180
Min:Sec	5:12	3:28	2:36	2:05	1:44

700	2000	STOAS	VGSI and ILS glidepath not coincident (VGSI Angle 3.00/TCH 46).
↑	hdg 360°	CHS R-282	
One Minute Holding Pattern			
ZILTA I-RBW [2.8]		1800	LAMKE I-RBW [12.6]
I-RBW [1.1]	I-RBW [2.1]	680	1800
1 NM		0.7	3.5 NM
		6.3 NM	
		GS 3.00°	TCH 43

CATEGORY	A	B	C	D
S-ILS 23	301-¾ 200 (200-¾)			
S-LOC 23	460-¾	359 (400-¾)	460-⅞	359 (400-⅞)
<input checked="" type="checkbox"/> CIRCLING	620-1	519 (600-1)	700-1½	700-2
			599 (600-1½)	599 (600-2)

SE-2, 15 MAY 2025 to 12 JUN 2025

SE-2, 15 MAY 2025 to 12 JUN 2025