

| | | |
|--|------------------------|--|
| WAAS CH 87011 W20A | APP CRS 197° | Rwy Idg TDZE Apt Elev 6505 25 26 |
|--|------------------------|--|

RNAV (GPS) RWY 20

PITT-GREENVILLE (PGV)

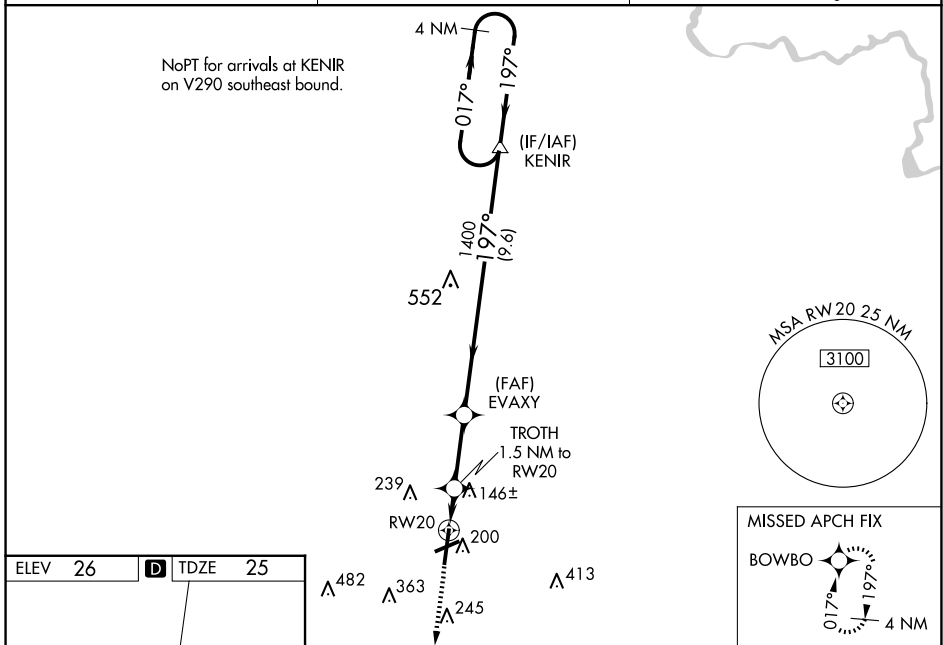
RNP APCH - GPS.

⚠ Baro-VNAV NA when using Washington altimeter setting. For uncompensated Baro-VNAV systems, LNAV/VNAV NA below -15°C or above 50°C. When local altimeter setting not received use Washington altimeter setting and increase LPV DA to 272 feet; increase LNAV/VNAV DA to 345; increase all MDAs 60 feet and Circling visibility Cat D ¼ SM. For inop ALS, increase LNAV/VNAV all Cats visibility to ¾ mile and LNAV all Cats visibility to 1 mile. For inop ALS when using Washington altimeter setting, increase LNAV/VNAV all Cats visibility ½ SM, and LNAV visibility Cat A/B ¼ SM. Rwy 20 helicopter visibility reduction below ¾ SM NA.

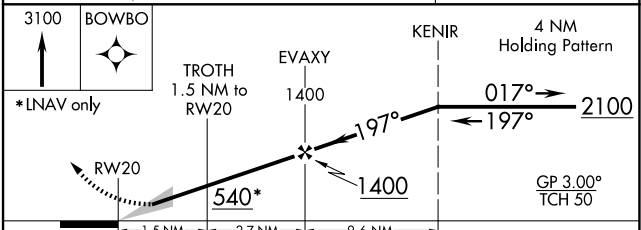
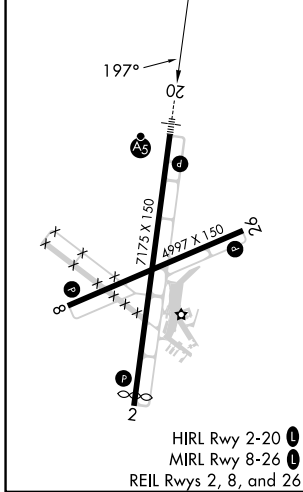


MISSED APPROACH:
Climb to 3100 direct BOWBO and hold, continue climb-in-hold to 3100.

| | | |
|--------------------------|---|---------------------------------|
| AWOS-3 128.425 | WASHINGTON CENTER 123.85 279.65 | UNICOM 122.8 (CTAF) 0 |
|--------------------------|---|---------------------------------|



| | | |
|---------|----------|---------|
| ELEV 26 | D | TDZE 25 |
|---------|----------|---------|



| CATEGORY | A | B | C | D |
|-------------------|----------------------|----------------------|----------------------|------------------------|
| LPV DA | | 231-½ | 205 (300-½) | |
| LNAV/VNAV DA | | 304-¾ | 278 (300-¾) | |
| LNAV MDA | | 400-¾ | 374 (400-¾) | |
| C CIRCLING | 600-1 574 (600-1) | 620-1 594 (600-1) | 700-2 674 (700-2) | 800-2½ 774 (800-2½) |

SE-2, 07 AUG 2025 to 04 SEP 2025

SE-2, 07 AUG 2025 to 04 SEP 2025