

| | | |
|---|------------------------|---|
| LOC/DME I-PGV 110.7 Chan 44 | APP CRS 197° | Rwy Idg 6505 TDZE 25 Apt Elev 26 |
|---|------------------------|---|

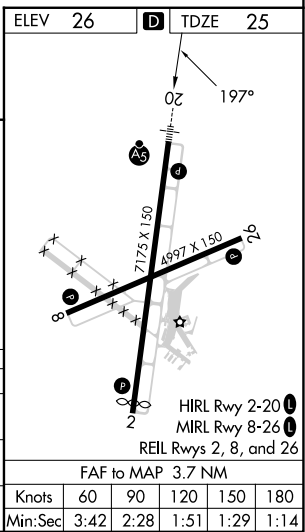
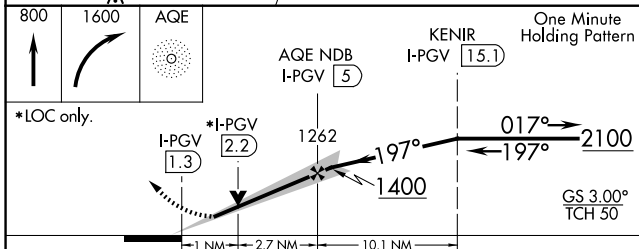
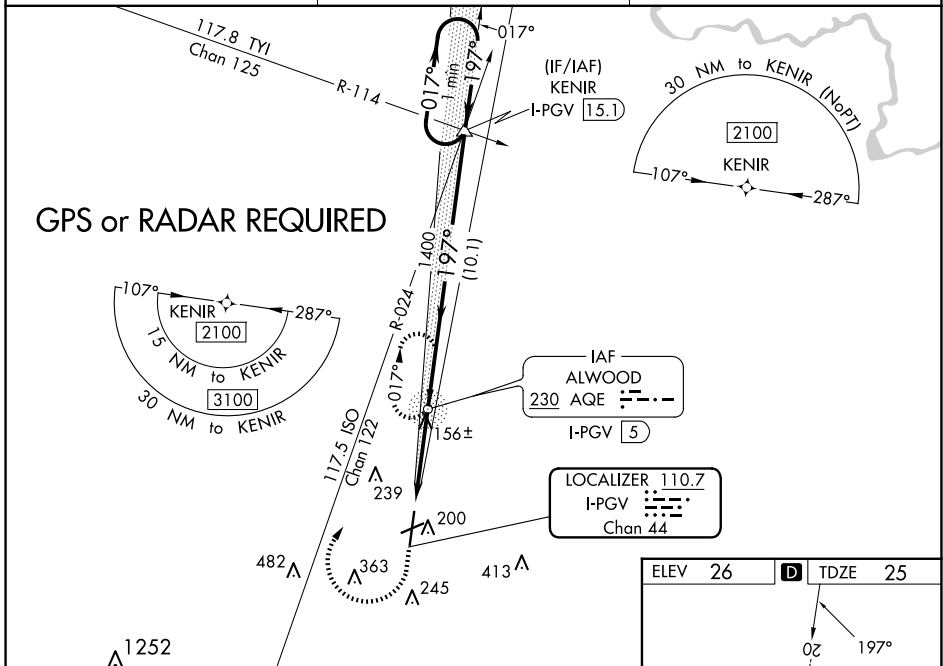
ILS Y or LOC Y RWY 20

PITT-GREENVILLE (PGV)

ADF required. VDP NA with Washington altimeter setting. When local altimeter setting not received use Washington altimeter setting and increase S-ILS 20 DA to 298 feet; increase all MDAs 60 feet and S-LOC 20 visibility Cat C/D 1/2 SM, and Circling visibility Cat D 1/4 SM. For inop ALS when using Washington altimeter setting, increase S-ILS 20 all Cats visibility 3/8 SM, and S-LOC 20 visibility Cat A/B 1/4 SM. Inop table does not apply to S-ILS all Cats. Rwy 20 helicopter visibility reduction below 3/4 SM NA. For inop ALS, increase S-LOC 20 visibility Cat A/B 1/4 SM, Cat C/D 3/8 SM.

MALSR
MISSED APPROACH: Climb to 800 then climbing right turn to 1600 direct AGE NDB and hold.

| | | |
|--------------------------|---|---------------------------------|
| AWOS-3 128.425 | WASHINGTON CENTER 123.85 279.65 | UNICOM 122.8 (CTAF) 1 |
|--------------------------|---|---------------------------------|



| | | | | |
|-------------------|----------------------|----------------------|----------------------|------------------------------|
| CATEGORY | A | B | C | D |
| S-ILS 20 | | 257-3/4 | 231 (300-3/4) | |
| S-LOC 20 | | 420-3/4 | 394 (400-3/4) | |
| C CIRCLING | 600-1 574 (600-1) | 620-1 594 (600-1) | 700-2 674 (700-2) | 800-2 1/2 774 (800-2 1/2) |

SE-2, 15 MAY 2025 to 12 JUN 2025

SE-2, 15 MAY 2025 to 12 JUN 2025