

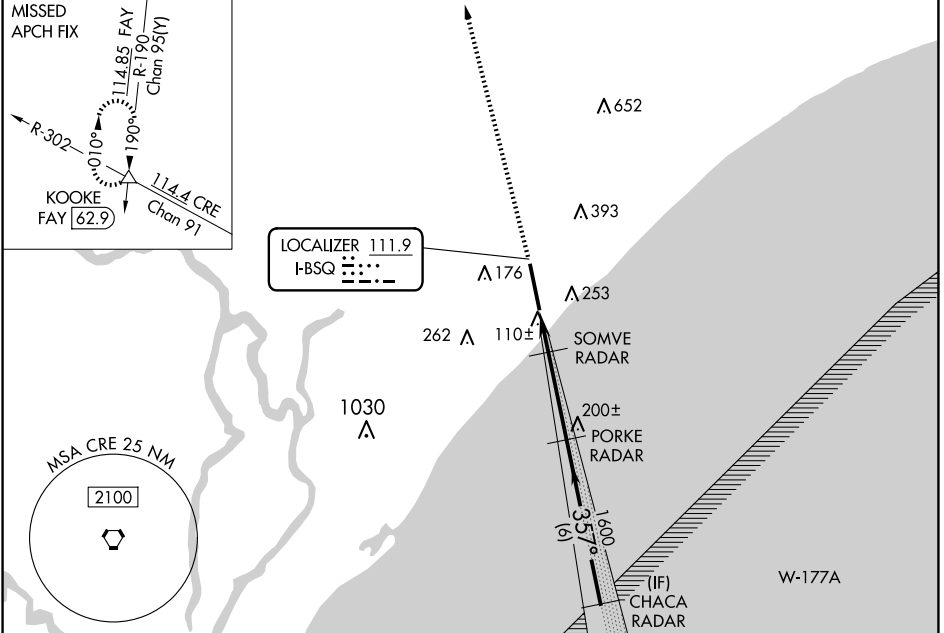
LOC I-BSQ	APP CRS	Rwy Idg	9503
111.9	357°	TDZE	25
		Apt Elev	25

ILS or LOC RWY 36

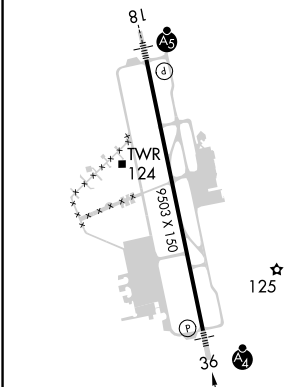
MYRTLE BEACH INTL (MYR)

RADAR required.		MALSF	MISSED APPROACH: Climb to 3000 on heading 357° expect RADAR vectors to KOOKE INT/FAY 62.9 DME and hold.		
For inop ALS increase S-LOC 36 Cats D/E visibility to RVR 5000.					

ATIS	MYRTLE BEACH APP CON ★ (171° - 321°) 127.4 257.95 (322° - 170°) 119.2 350.3	MYRTLE BEACH TOWER ★ 128.45 (CTAF) 259.3	GND CON	CLNC DEL	UNICOM
123.925			120.3 275.8	120.3	122.95

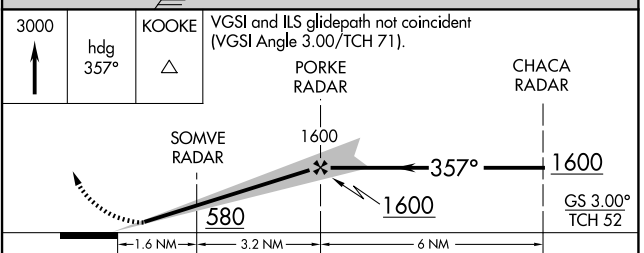


ELEV 25	TDZE 25
---------	---------



FAF to MAP 4.8 NM					
Knots	60	90	120	150	180
Min:Sec	4:48	3:12	2:24	1:55	1:36

3000	hdg 357°	KOOKE	VGSI and ILS glidepath not coincident (VGSI Angle 3.00/TCH 71).		
		△	PORKE RADAR	CHACA RADAR	



CATEGORY	A	B	C	D	E
S-ILS 36	225/40 200 (200-¾)				
S-LOC 36	360/40 335 (400-¾)				
CIRCLING	560-1	535 (600-1)	700-2 675 (700-2)	700-2¼ 675 (700-2¼)	700-2½ 675 (700-2½)

SE-2, 15 MAY 2025 to 12 JUN 2025

SE-2, 15 MAY 2025 to 12 JUN 2025