

EASTOVER, SOUTH CAROLINA

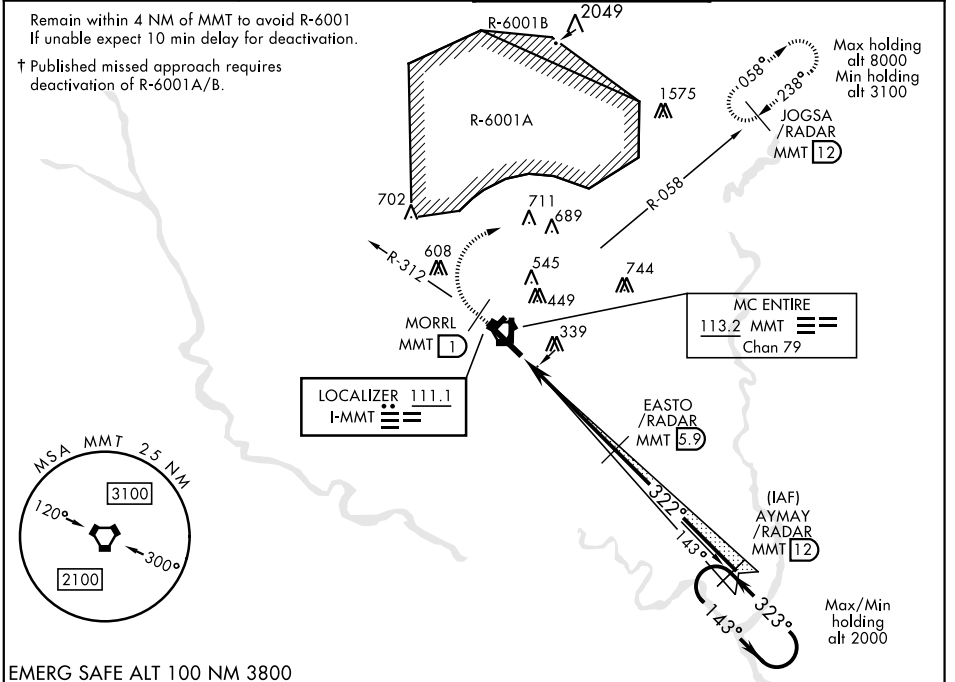
ILS or LOC/DME RWY 32

LOC I-MMT 111.1	APCH CRS 322°	Rwy ldg TDZE Arprt Elev 9009 243 254	AL-951 [USAF]	MC ENTIRE JNGB (KMMT)
---------------------------	-------------------------	--	---------------	-----------------------

▼ * When ALS inop, increase CAT ABCDE RVR to 40, and vis to 3/4 mile.
 ** When ALS inop, increase CAT ABCDE RVR to 55, and vis to 1 mile.

⬆ MISSED APPROACH: Climb to 1100 direct MORRL/ 1 DME then climbing right to 3100 intercept MMT R-058 direct JOGSA/12 DME and hold.

ATIS 327.05	SHAW APP CON 125.4 318.1	MC ENTIRE TOWER ★ 132.4 (CTAF) 253.5	GND CON 127.625 226.675
-----------------------	------------------------------------	--	-----------------------------------



SE-2, 24 MAY 2018 to 21 JUN 2018

SE-2, 24 MAY 2018 to 21 JUN 2018

EMERG SAFE ALT 100 NM 3800

1100 MORRL (1)	3100 MMT R-058	JOGSA/RADAR MMT (12)	ELEV 254 TDZE 243			
VORTAC	EGULE (1.4)	EASTO/RADAR (5.9)	AYMAY/RADAR (12)			
322° heading, 1600 alt, 143° heading, 2000 alt, 323° heading, 2000 alt. GS 2.50° TCH 48.			TWR 350 2030 x 90 2009 x 150 322° 4.8 NM from FAF			
CATEGORY	A	B	C	D	E	
S-ILS 32 *	443/24 200 (200-1/2)					
S-LOC 32 **	620/24 377 (400-1/2)	620/35 377 (400-3/4)				
CIRCLING	740-1 486 (500-1)	840-1 586 (600-1)	880-1 3/4 626 (700-1 3/4)	940-2 1/4 686 (700-2 1/4)	1020-2 3/4 766 (800-2 3/4)	
	FAF to MAP 4.5 NM					
Knots		120	140	160	180	200
Min:Sec		2:15	1:56	1:41	1:30	1:21

EASTOVER, SOUTH CAROLINA 33° 55' N-80° 48' W MC ENTIRE JNGB (KMMT)

Amtd 4 25MAY17

ILS or LOC/DME RWY 32