

EASTOVER, SOUTH CAROLINA

HI-TACAN RWY 32

MC ENTIRE JNGB (KMMT)

VORTAC MMT 113.2 Chan 79	APCH CRS 328°	Rwy ldg TDZE 243 Arpt Elev 254	9009
--	-------------------------	--	-------------

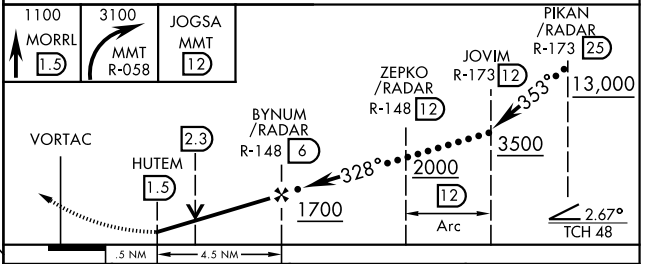
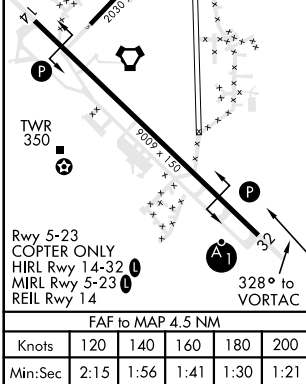
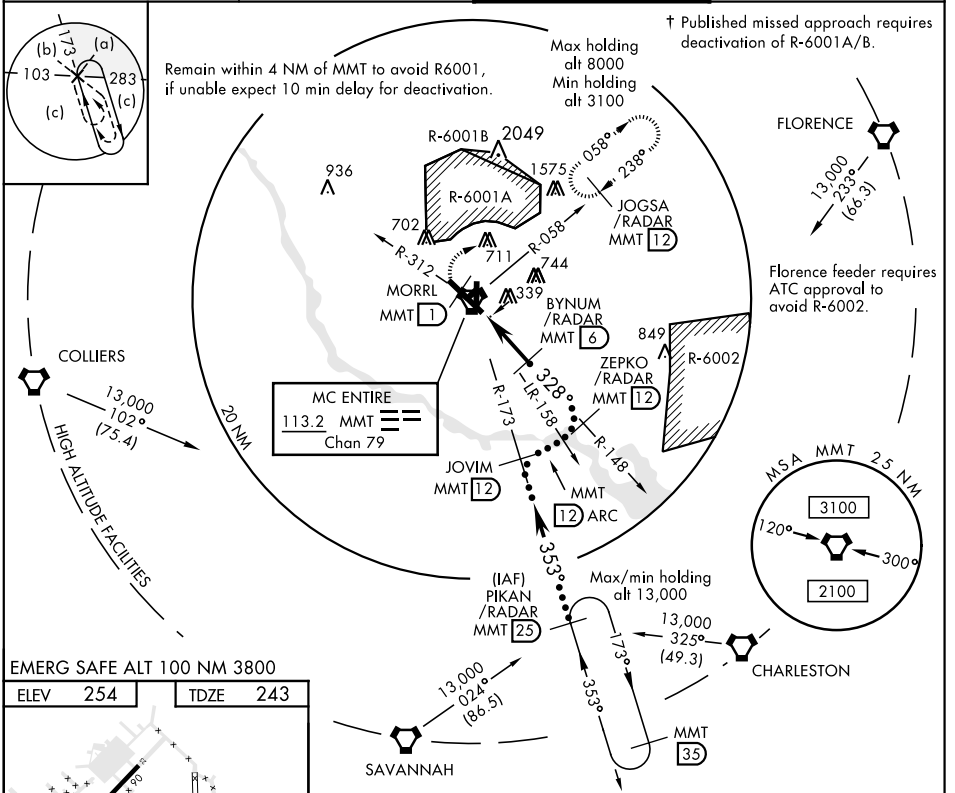
JAL-951 [USAF]

▼ * When ALS inop, increase CAT CDE RVR 60, vis to 1½ miles.



† MISSED APPROACH: Climb to 1100 direct MORRL/1 DME then climbing right turn to 3100 intercept MMT R-058 direct JOGSA/12 DME and hold.

ATIS 327.05	SHAW APP CON 125.4 318.1	MC ENTIRE TOWER ★ 132.4 (CTAF) 0 253.5	GND CON 127.625 226.675
-----------------------	------------------------------------	--	-----------------------------------



CATEGORY	C	D	E
S-32 *	640/40	397 (400-¾)	
ⓐ CIRCLING	880-1¾ 626 (700-1¾)	940-2½ 686 (700-2½)	1020-2¾ 766 (800-2¾)

EASTOVER, SOUTH CAROLINA
Amdt 4 25MAY17

33°55'N-80°48'W

MC ENTIRE JNGB (KMMT)

HI-TACAN RWY 32

SE-2, 11 OCT 2018 to 08 NOV 2018

SE-2, 11 OCT 2018 to 08 NOV 2018