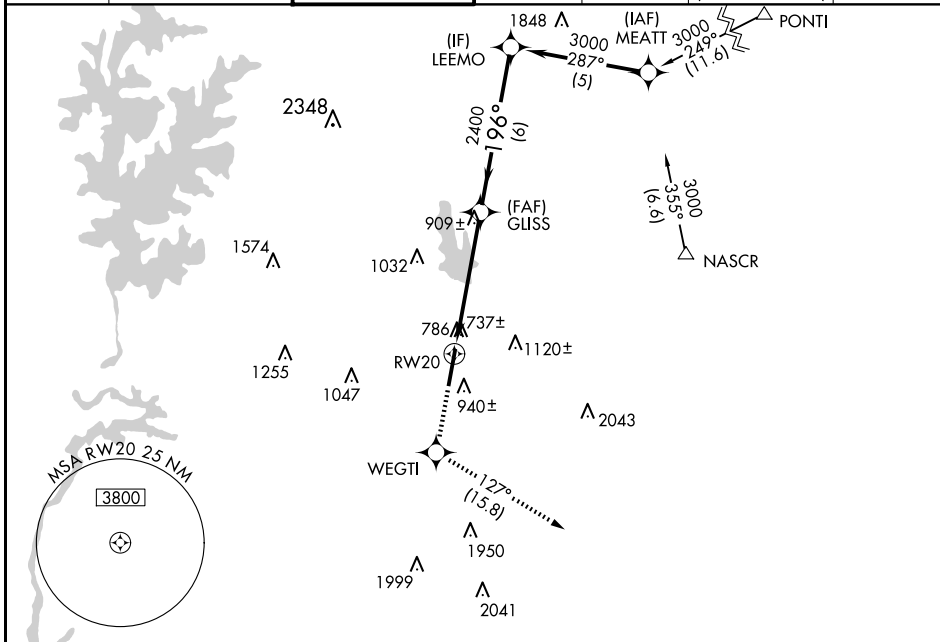


WAAS CH 56499 W20A	APP CRS 196°	Rwy Idg TDZE Apt Elev	6350 699 704
--	------------------------	-----------------------------	---

RNAV (GPS) RWY 20

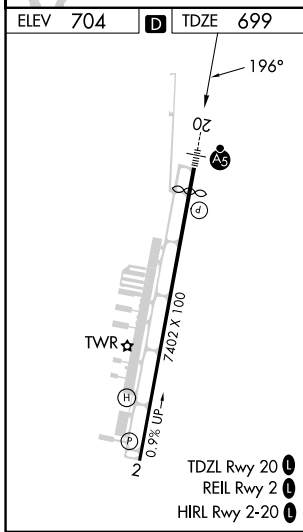
CONCORD-PADGETT RGNL (JQF)

RNP APCH-GPS.		MALSR		MISSED APPROACH: Climb to 3000 direct WEGTI and on track 127° to LOCAS and hold.		
<p>V For uncompensated Baro-VNAV systems, LNAV/VNAV NA below -16°C or above 54°C. For inop ALS, increase LNAV/VNAV visibility all Cats to 1$\frac{3}{8}$ SM. Rwy 20 helicopter visibility reduction below $\frac{3}{4}$ SM NA.</p>						
ATIS 133.675	CHARLOTTE APP CON 128.325 307.8	CONCORD TOWER * 134.65 (CTAF)	GND CON 121.85	CLNC DEL 118.55	CLNC DEL 127.25 (when twr closed)	UNICOM 122.95



SE-2, 15 MAY 2025 to 12 JUN 2025

SE-2, 15 MAY 2025 to 12 JUN 2025



ELEV 704	D	TDZE 699	LOCAS 093° 4 NM 273°	
3000	WEGTI	LOCAS	LEEMO	
↑	✧	△		
*LNAV only.		GLISS		
RWY 20		*1.8 NM to RWY 20		3000
1.8 NM		3.3 NM		6 NM
196°		2400		GP 3.00° TCH 44
2400				
CATEGORY	A	B	C	D
LPV DA		1026- $\frac{3}{4}$	327 (400- $\frac{3}{4}$)	
LNAV/VNAV DA		1222-1 $\frac{1}{4}$	523 (600-1 $\frac{1}{4}$)	
LNAV MDA	1300- $\frac{3}{4}$	601 (600- $\frac{3}{4}$)	1300-1 $\frac{3}{8}$	601 (600-1 $\frac{3}{8}$)
CIRCLING	1300-1	596 (600-1)	1480-2 $\frac{1}{4}$ 776 (800-2 $\frac{1}{4}$)	1480-2 $\frac{1}{2}$ 776 (800-2 $\frac{1}{2}$)