

LOC/DME I-IPJ <b>111.15</b> Chan 48 (Y)	APP CRS <b>233°</b>	Rwy Idg TDZE Apt Elev	<b>5501</b> <b>872</b> <b>878</b>
---	------------------------	-----------------------------	---

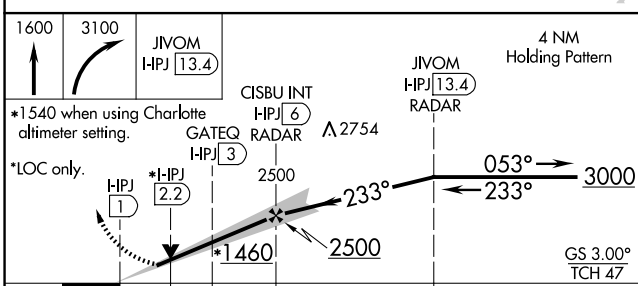
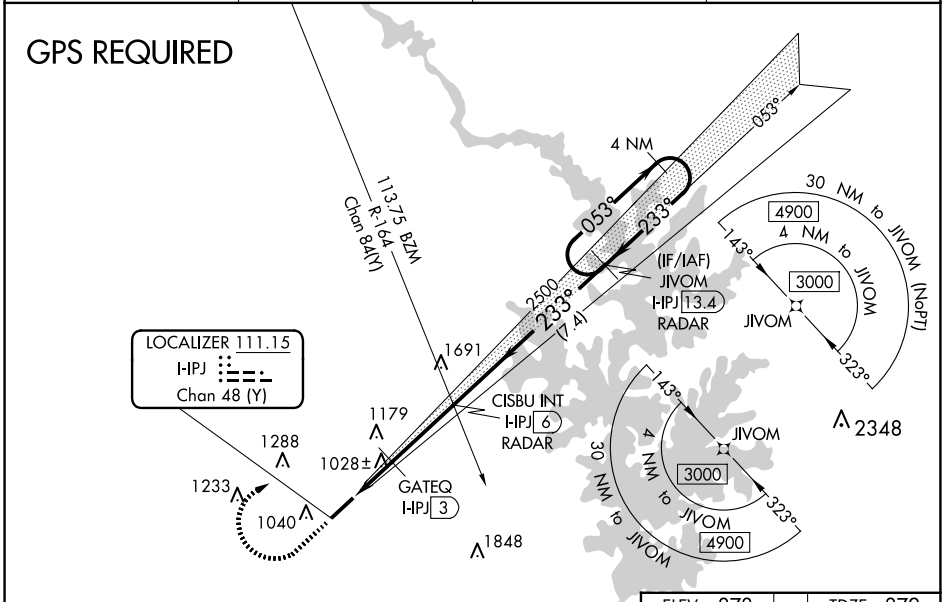
# ILS Y or LOC Y RWY 23

LINCOLNTON-LINCOLN COUNTY RGNL (IPJ)

**⚠** When local altimeter setting not received, use Charlotte altimeter setting: increase DA to 1212 feet and visibility 1/8 SM; increase all MDAs 80 feet and visibility S-LOC 23 Cats C/D 1/8 SM and Circling Cats C/D visibility 1/4 SM and GATEQ Fix Minimums Cats C/D 1/4 SM. VDP NA when using Charlotte altimeter setting. Rwy 23 helicopter visibility reduction below 3/4 SM NA.

**MISSED APPROACH:** Climb to 1600 then climbing right turn to 3100 direct JIVOM I-HPJ 13.4 DME/RADAR and hold (GPS Required).

AWOS-3 <b>119.675</b>	CHARLOTTE APP CON <b>134.75 257.2</b>	CLNC DEL (GCO) <b>124.9</b>	UNICOM <b>123.05 (CTAF) 0</b>
--------------------------	--	--------------------------------	----------------------------------



ELEV 878	TDZE 872
REIL Rwy 5 and 23 MIRL Rwy 5-23	
FAF to MAP 5 NM	
Knots	60 90 120 150 180
Min:Sec	5:00 3:20 2:30 2:00 1:40

CATEGORY	A	B	C	D
S-ILS 23	1149-7/8 277 (300-7/8)			
S-LOC 23	1460-1	588 (600-1)	1460-1 3/4	588 (600-1 3/4)
<b>C</b> CIRCLING	1460-1	582 (600-1)	1640-2 1/4	1640-2 1/2
GATEQ FIX MINIMUMS				
S-LOC 23	1280-1	408 (500-1)	1280-1 1/8	408 (500-1 1/8)
<b>C</b> CIRCLING	1400-1	1440-1	1640-2 1/4	1640-2 1/2
	522 (600-1)	562 (600-1)	762 (800-2 1/4)	762 (800-2 1/2)

SE-2, 15 MAY 2025 to 12 JUN 2025

SE-2, 15 MAY 2025 to 12 JUN 2025