

WAAS CH 90424 W22A	APP CRS 220°	Rwy Idg 4401 TDZE 35 Apt Elev 35
--	------------------------	---

RNAV (GPS) RWY 22

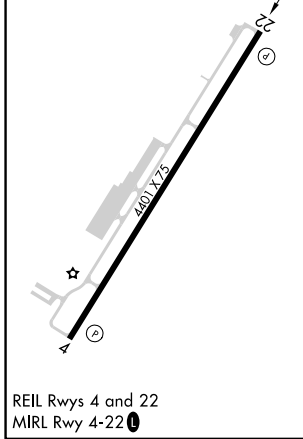
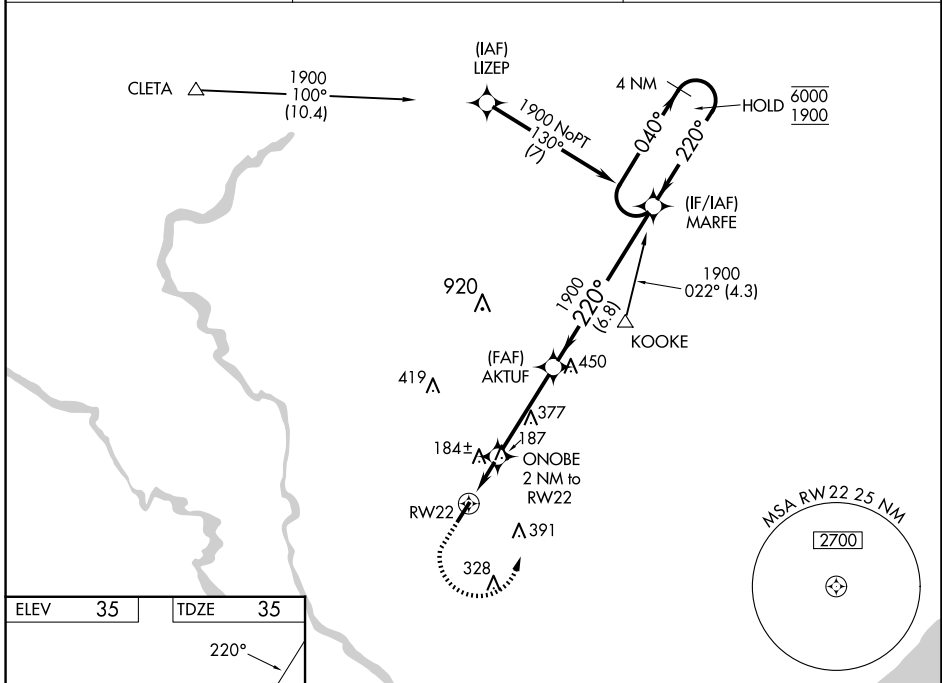
CONWAY-HORRY COUNTY (HYW)

RNP APCH.

⚠ Rwy 22 helicopter visibility reduction below 1 SM NA. Straight-in Rwy 22 at night, operational VGSI required, remain on or above VGSI glidepath until threshold. For uncompensated Baro-VNAV systems, LNAV/VNAV NA below -15°C or above 54°C.

MISSED APPROACH: Climb to 500 then climbing left turn to 1900 direct MARFE and hold.

AWOS-3 119.525	MYRTLE BEACH APP CON★ 127.4 257.95	UNICOM 122.7 (CTAF)
--------------------------	--	-------------------------------



ELEV 35	TDZE 35	500 1900 MARFE		VGSI and RNAV glidepath not coincident (VGSI Angle 3.00/TCH 43).	4 NM Holding Pattern
*LNAV only.		ONOBE 2 NM to RW22	AKTUF 1900	MARFE	
RW22		700*	1900	040° → 6000	← 220° 1900
2 NM		3.7 NM	6.8 NM	GP 3.00° TCH 40	
CATEGORY	A	B	C	D	
LPV DA	285-1		250 (300-1)		
LNAV/VNAV DA	438-1 1/8		403 (500-1 1/8)		
LNAV MDA	440-1 405 (500-1)		440-1 1/8		405 (500-1 1/8)
CIRCLING	520-1	540-1	700-1 3/4	700-2	
	485 (500-1)	505 (600-1)	665 (700-1 3/4)	665 (700-2)	

SE-2, 15 MAY 2025 to 12 JUN 2025

SE-2, 15 MAY 2025 to 12 JUN 2025