

WAAS CH 53739 W21A	APP CRS 210°	Rwy Idg TDZE Apt Elev	5501 668 671
--	------------------------	-----------------------------	---

RNAV (GPS) RWY 21

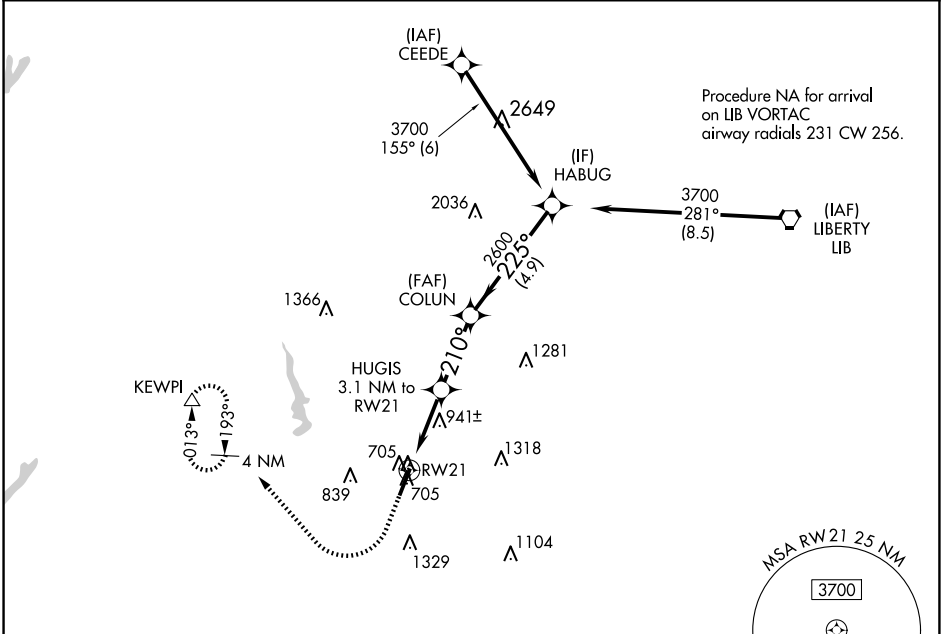
ASHEBORO RGNL (HBI)

RNP APCH-GPS.

▼ For uncompensated Baro-VNAV systems, LNAV/VNAV NA below -16°C (4°F) or above 54°C (130°F). Rwy 21 helicopter visibility reduction below 3/4 SM NA.

MISSED APPROACH: Climb to 3000 then right turn direct KEWPI and hold.

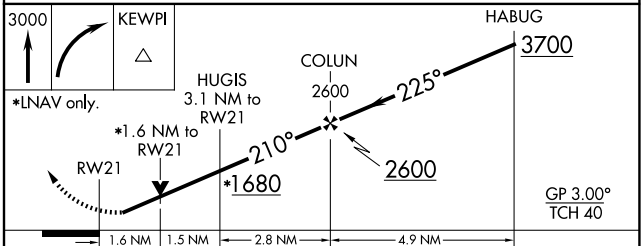
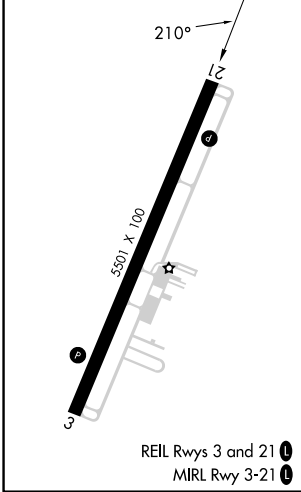
AWOS-3 119.275	GREENSBORO APP CON 126.6 327.075	UNICOM 122.8 (CTAF) 0
--------------------------	--	---------------------------------



SE-2, 15 MAY 2025 to 12 JUN 2025

SE-2, 15 MAY 2025 to 12 JUN 2025

ELEV 671	TDZE 668
----------	----------



CATEGORY	A	B	C	D
LPV DA		918-3/4	250 (300-3/4)	
LNAV/VNAV DA		1069-1/8	401 (400-1/8)	
LNAV MDA	1220-1	552 (600-1)	1220-15/8	552 (600-15/8)
CIRCLING	1300-1 629 (700-1)	1360-1 689 (700-1)	1680-3	1009 (1100-3)