

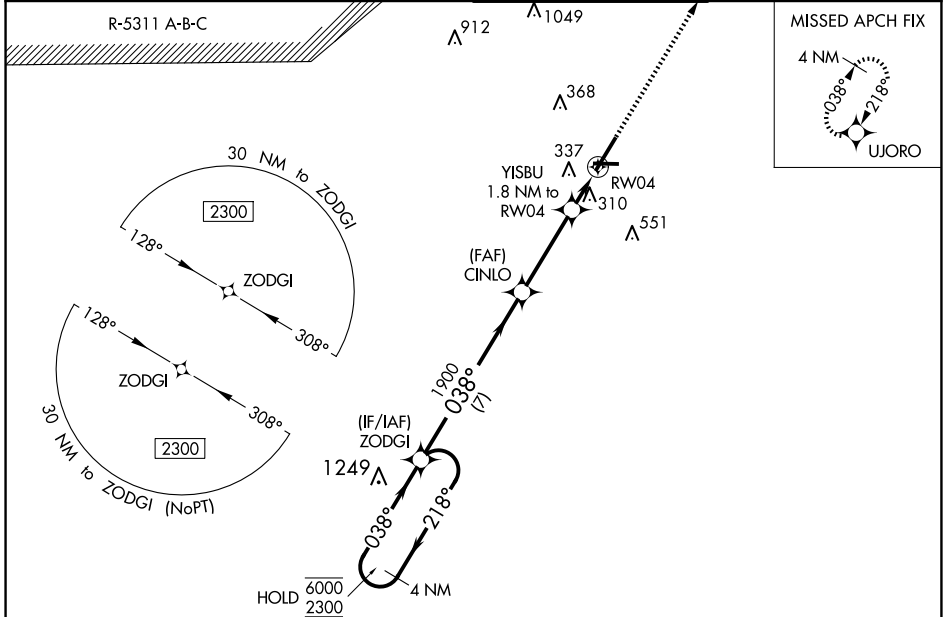
WAAS CH 50111 W04A	APP CRS 038°	Rwy Idg TDZE Apt Elev	6508 189 189
--	------------------------	-----------------------------	---

RNAV (GPS) RWY 4

FAYETTEVILLE RGNL/GRANNIS FLD (FAY)

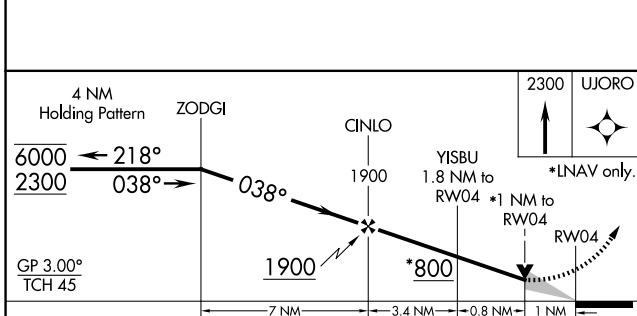
RNP APCH.	MALSR	MISSED APPROACH: Climb to 2300 direct UJORO and hold.
For uncompensated Baro-VNAV systems, LNAV/VNAV NA below -10° C or above 54°C. # RVR 1800 authorized with use of FD or AP or HUD to DA.		

ATIS 121.25	FAYETTEVILLE APP CON 133.0 290.25	FAYETTEVILLE TOWER 118.3 269.2	GND CON 121.7 348.6
-----------------------	---	--	-------------------------------



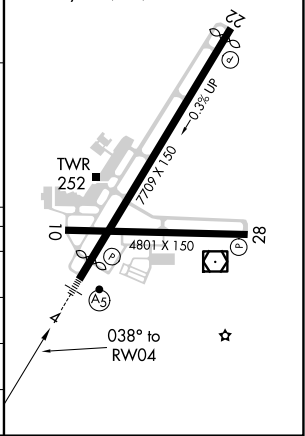
SE-2, 15 MAY 2025 to 12 JUN 2025

SE-2, 15 MAY 2025 to 12 JUN 2025



ELEV 189	D	TDZE 189
----------	----------	----------

HIRL Rwy 4-22
MIRL Rwy 10-28
REIL Rwys 10, 22, and 28



CATEGORY	A	B	C	D
LPV DA #		389/24	200 (200-½)	
LNAV/VNAV DA		588/35	399 (400-⅙)	
LNAV MDA		560/24	371 (400-½)	
C CIRCLING	640-1 451 (500-1)	660-1 471 (500-1)	860-2 671 (700-2)	860-2¼ 671 (700-2¼)