

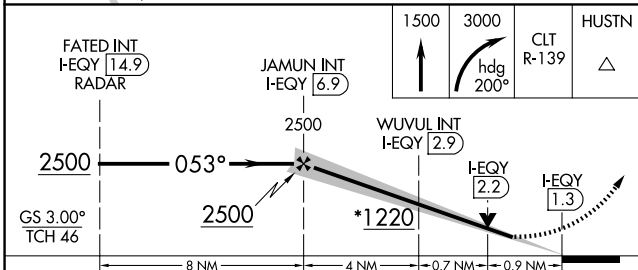
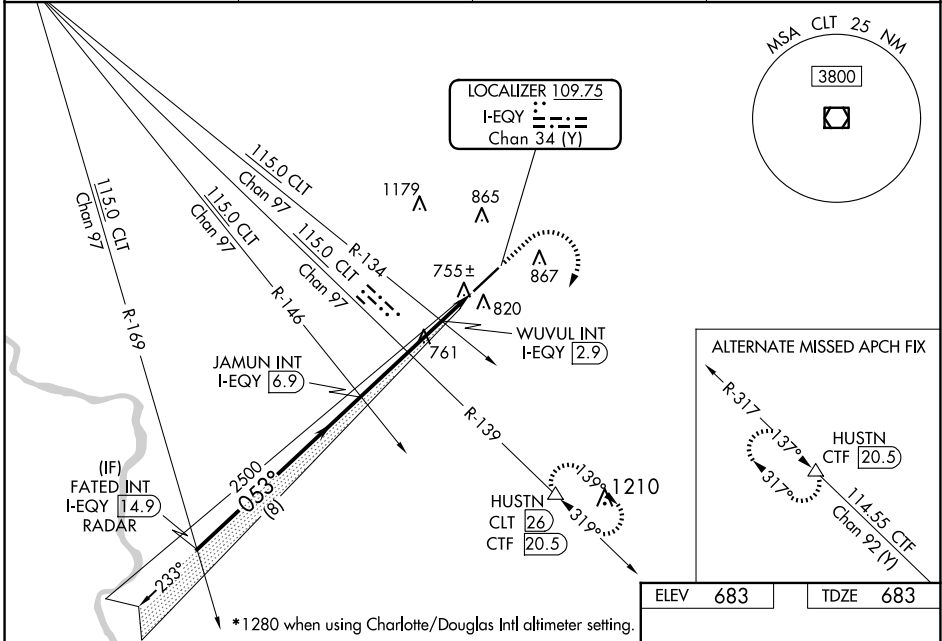
| | | |
|--|------------------------|--|
| LOC/DME I-EQY 109.75 Chan 34 (Y) | APP CRS 053° | Rwy ldg 7001 TDZE 683 Apt Elev 683 |
|--|------------------------|--|

ILS or LOC RWY 5

CHARLOTTE/MONROE EXEC (EQY)

| | | |
|---|-----------|--|
| DME required. RADAR required for procedure entry. | MALSR | MISSED APPROACH: Climb to 1500 then climbing right turn to 3000 on heading 200° and on CLT VOR/DME R-139 to HUSTN/CLT 26 DME and hold, continue climb-in-hold to 3000. |
| Rwy 5 helicopter visibility reduction below 3/4 SM NA. Inop table does not apply to S-ILS 5 all Cats. For inop ALS, increase S-LOC 5 Cat A/B visibility and WUVUL fix minimums S-LOC 5 all Cats visibility to 1 SM. | | |

| | | | |
|------------------------|--|---------------------------|-------------------------------|
| ASOS 135.775 | CHARLOTTE APP CON 120.05 307.8 | CLNC DEL 132.55 | UNICOM 122.7 (CTAF) |
|------------------------|--|---------------------------|-------------------------------|



| | |
|----------|----------|
| ELEV 683 | TDZE 683 |
|----------|----------|

| | | | | | |
|---|----------|---------------|-------------------------------|-------------------------------|-------|
| CATEGORY | A | B | C | D | HUSTN |
| S-ILS 5 | | 933-3/4 | 250 (300-3/4) | | |
| S-LOC 5 | 1220-3/4 | 537 (600-3/4) | 1220-1 | 537 (600-1) | |
| CIRCLING | 1220-1 | 537 (600-1) | 1220-1 1/2 537 (600-1 1/2) | 1480-2 1/2 797 (800-2 1/2) | |
| WUVUL FIX MINIMUMS (DUAL VOR RECEIVERS OR DME REQUIRED) | | | | | |
| S-LOC 5 | 1020-3/4 | | 337 (400-3/4) | | |
| CIRCLING | 1220-1 | 537 (600-1) | 1220-1 1/2 537 (600-1 1/2) | 1480-2 1/2 797 (800-2 1/2) | |
| FAF to MAP 5.6 NM | | | | | |
| Knots | | 60 | 90 | 120 | 150 |
| Min:Sec | | 5:35 | 3:44 | 2:48 | 2:14 |

SE-2, 15 MAY 2025 to 12 JUN 2025

SE-2, 15 MAY 2025 to 12 JUN 2025