

LOC/DME I-EDE 110.95 Chan 46(Y)	APP CRS 190°	Rwy Idg 6001 TDZE 19 Apt Elev 19
---	------------------------	---

ILS or LOC RWY 19

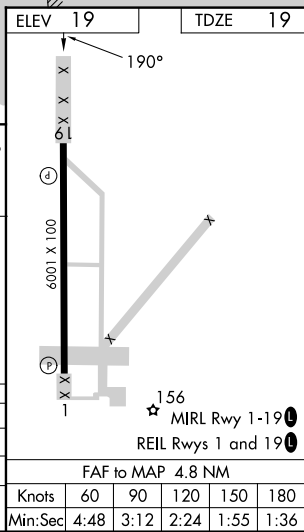
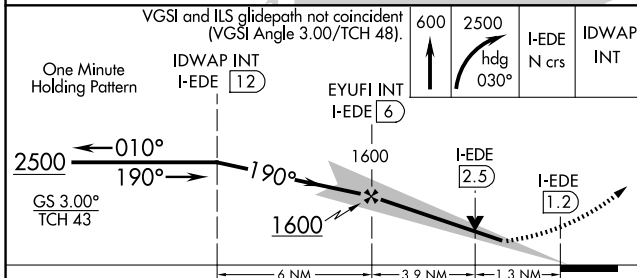
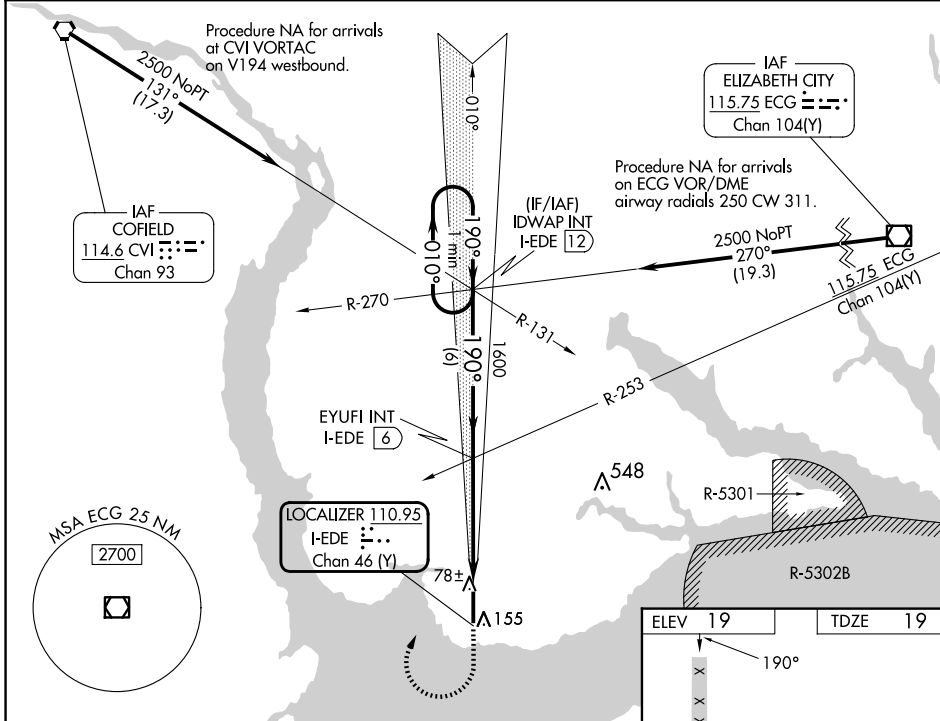
NORTHEASTERN RGNL (E/D/E)

DME or RADAR required for procedure entry.

▼ When local altimeter setting not received, use Elizabeth City altimeter setting: increase S-ILS 19 DA to 276 feet; increase all MDAs 60 feet and S-LOC 19 visibility Cat C/D 1/8 SM, and Circling visibility Cat C 1/4 SM. VDP NA when using Elizabeth City altimeter setting. Rwy 19 helicopter visibility reduction below 3/4 SM NA.

▲ MISSED APPROACH: Climb to 600 then climbing right turn to 2500 on heading 030° and I-EDE localizer N course to IDWAP INT/I-EDE 12 DME and hold.

AWOS-3 118.275	WASHINGTON CENTER 123.85 279.65	UNICOM 123.0 (CTAF) 0
--------------------------	---	---------------------------------



CATEGORY	A	B	C	D
S-ILS 19	219-3/4 200 (200-3/4)			
S-LOC 19	480-1	461 (500-1)	480-1 3/8	461 (500-1 3/8)
CIRCLING	520-1	501 (600-1)	560-1 1/2	580-2
			541 (600-1 1/2)	561 (600-2)

FAF to MAP 4.8 NM					
Knots	60	90	120	150	180
Min:Sec	4:48	3:12	2:24	1:55	1:36

SE-2, 15 MAY 2025 to 12 JUN 2025

SE-2, 15 MAY 2025 to 12 JUN 2025