

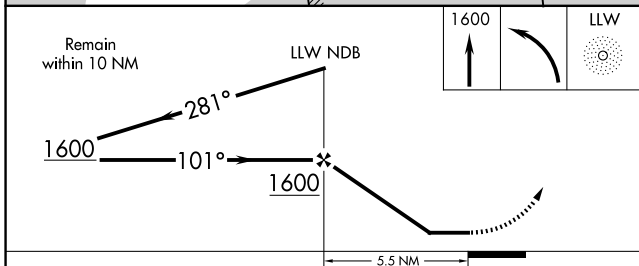
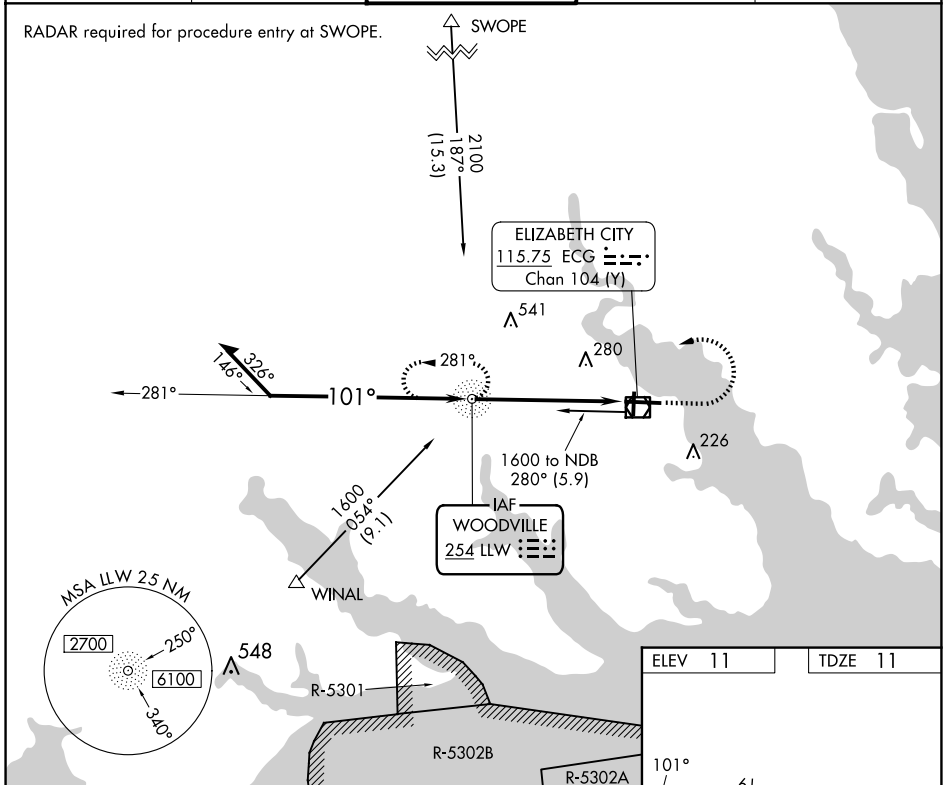
NDB LLW <b>254</b>	APP CRS <b>101°</b>	Rwy Idg <b>7219</b> TDZE <b>11</b> Apt Elev <b>11</b>
-----------------------	------------------------	---

# NDB RWY 10

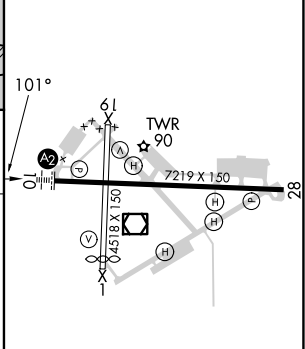
ELIZABETH CITY CG AIR STATION/RGNL (E/C/G)

	Procedure not authorized when tethered balloon located approximately 2 miles southeast of airport is flying. When local altimeter setting not received, use Currituck altimeter setting and increase all MDA 40 feet.	SALS 	MISSED APPROACH: Climb to 1600 then left turn direct LLW NDB and hold.
	Procedure not authorized when tethered balloon located approximately 2 miles southeast of airport is flying. When local altimeter setting not received, use Currituck altimeter setting and increase all MDA 40 feet.		

ASOS <b>124.375</b>	NORFOLK APP CON <b>119.55 269.425</b>	ELIZABETH CITY TOWER★ <b>120.5 (CTAF) 355.6</b>	GND CON <b>121.9</b>	UNICOM <b>122.95</b>
------------------------	--	--	-------------------------	-------------------------



ELEV 11	TDZE 11
---------	---------



CATEGORY	A	B	C	D
S-10	640-1 629 (700-1)		640-1¾ 629 (700-1¾)	640-2 629 (700-2)
CIRCLING	640-1 629 (700-1)		640-1¾ 629 (700-1¾)	640-2 629 (700-2)

MIRL Rwy 1-19  
HIRL Rwy 10-28  
REIL Rws 10 and 28

FAF to MAP 5.5 NM

Knots	60	90	120	150	180
Min:Sec	5:30	3:40	2:45	2:12	1:50

# NDB RWY 10

SE-2, 15 MAY 2025 to 12 JUN 2025

SE-2, 15 MAY 2025 to 12 JUN 2025