

LOC/DME I-PEP 111.3 Chan 50	APP CRS 183°	Rwy ldg 10000 TDZE 742 Apt Elev 748
--	------------------------	--

ILS or LOC RWY 18C

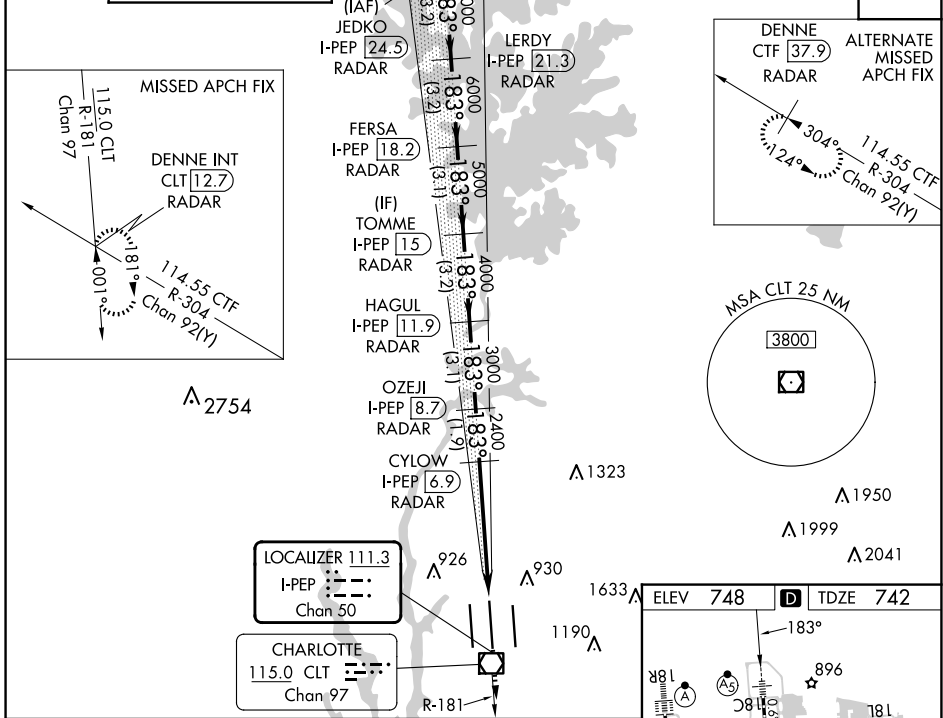
CHARLOTTE/DOUGLAS INTL (CLT)

RADAR required for procedure entry. DME or RADAR required

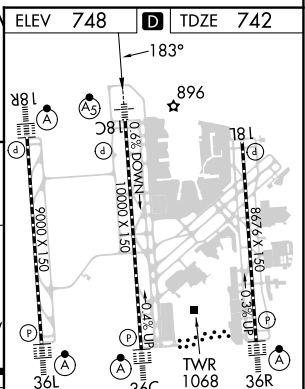
MAJRS

MISSED APPROACH: Climb to 3000 on CLT VOR/DME R-181 to DENNE INT/CLT 12.7 DME/RADAR and hold.

D-ATIS ARR 121.15 DEP 132.1	CHARLOTTE APP CON (001°-119°) 128.32 (120°-295°) 120.05 (296°-360°) 134.75 (180°-359°) 257.2 (360°-179°) 307.8	CHARLOTTE TOWER (Rwys 18L-36R) 118.1 257.8 (Rwy 18C-36C) 126.4 257.8 (Rwy 18R-36L) 133.35 257.8	GND CON 121.8 348.6 (WEST) 121.9 348.6 (EAST)	CLNC DEL 127.15 348.6
---	--	---	---	---



JEDKO I-PEP (24.5) RADAR	LERDY I-PEP (21.3) RADAR	VGSI and ILS glidepath not coincident (VGSI Angle 3.00/TCH 69).	FERSA I-PEP (18.2) RADAR	TOMME I-PEP (15) RADAR	HAGUL I-PEP (11.9) RADAR	OZEJI I-PEP (8.7) RADAR	CYLOW I-PEP (6.9) RADAR	DENNE INT I-PEP (1.8) RADAR
8000	7000	6000	5000	4000	3000	2400	2400	2400
GS 3.00° TCH 55								
-3.2 NM		-3.2 NM		-3.1 NM		-3.2 NM		-1.9 NM



CATEGORY	A	B	C	D
S-ILS 18C **	942/24 200 (200-½)			
S-LOC 18C	1220/24 478 (500-½)		1220/50 478 (500-1)	
CIRCLING	1380-1 632 (700-1)		1500-2¼ 752 (800-2¼) 1500-2½ 752 (800-2½)	

HIRL all Rwys					
REIL Rwys 18L and 23					
TDZ/CL Rwys 18R, 36L, 36C and 36R					
FAF to MAP 5 NM					
Knots	60	90	120	150	180
Min:Sec	5:00	3:20	2:30	2:00	1:40

SE-2, 07 AUG 2025 to 04 SEP 2025

SE-2, 07 AUG 2025 to 04 SEP 2025