

WAAS CH <b>45740</b> <b>W32A</b>	APP CRS <b>320°</b>	Rwy Idg TDZE Apt Elev	<b>5000</b> <b>67</b> <b>67</b>
--	------------------------	-----------------------------	---------------------------------------

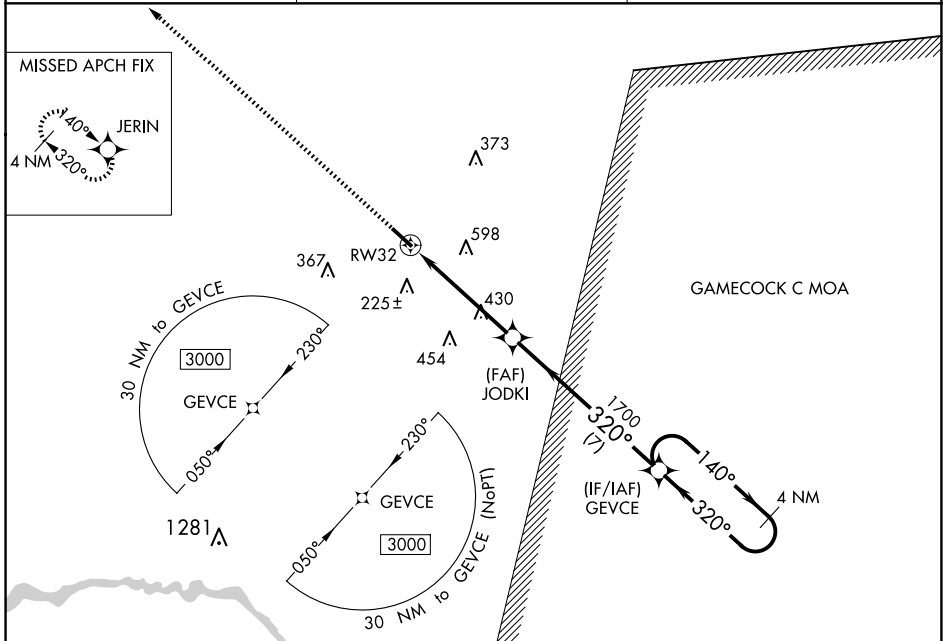
# RNAV (GPS) RWY 32

WILLIAMSBURG RGNL (CKI)

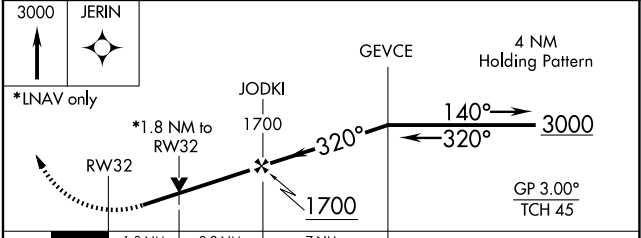
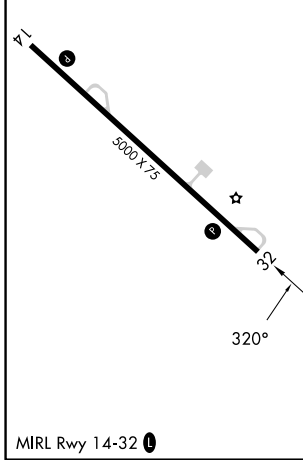
**⚠** For uncompensated Baro-VNAV systems, LNAV/VNAV NA below -1.5°C (5°F) or above 54°C (130°F). Baro-VNAV and VDP NA when using Florence Rgnl altimeter setting. Rwy 32 helicopter visibility reduction below 3/4 SM NA. DME/DME RNP-0.3 NA.

MISSED APPROACH: Climb to 3000 direct JERIN and hold.

AWOS-3 <b>124.775</b>	MYRTLE BEACH APP CON ★ <b>127.4 257.95</b>	UNICOM <b>122.7</b> (CTAF) <b>📻</b>
--------------------------	---	--



ELEV 67	TDZE 67
---------	---------



CATEGORY	A	B	C	D
LPV DA		317-7/8	250 (300-7/8)	
LNAV/VNAV DA		334-7/8	267 (300-7/8)	
LNAV MDA	680-1	613 (700-1)	680-1 3/4	613 (700-1 3/4)
<b>C</b> CIRCLING	680-1	613 (700-1)	960-2 3/4 893 (900-2 3/4)	960-3 893 (900-3)

SE-2, 15 MAY 2025 to 12 JUN 2025

SE-2, 15 MAY 2025 to 12 JUN 2025