

WAAS CH <b>63218</b> <b>W33A</b>	APP CRS <b>334°</b>	Rwy Idg TDZE Apt Elev	<b>9001</b> <b>45</b> <b>46</b>
--	------------------------	-----------------------------	---------------------------------------

# RNAV (GPS) Y RWY 33

CHARLESTON AFB/INTL (CHS)

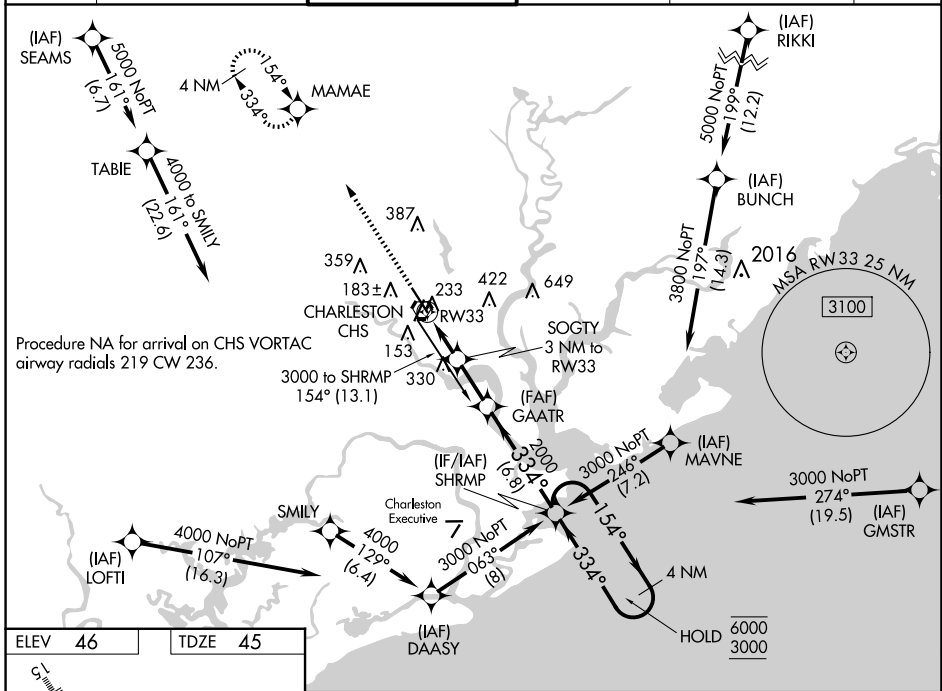
RNP APCH.

▼ For uncompensated Baro-VNAV systems, LNAV/VNAV NA below -5°C or above 54°C.  
# RVR 1800 authorized with use of FD or AP or HUD to DA.

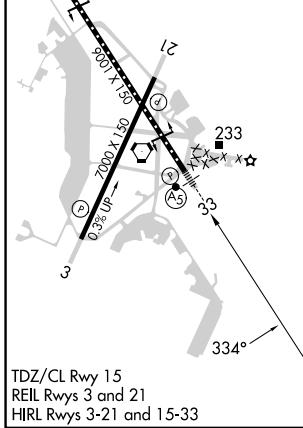
MALSR

MISSED APPROACH: Climb to 3000 direct MAMAE and hold, continue to climb-in-hold to 3000.

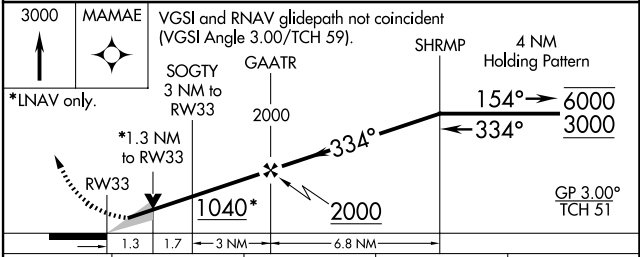
D-ATIS <b>124.75</b>	CHARLESTON APP CON <b>120.7 306.925</b>	CHARLESTON TOWER <b>126.0 239.0</b>	GND CON <b>121.9 348.6</b>	CLNC DEL <b>127.325 291.65</b>	CPDLC
-------------------------	--	--	-------------------------------	-----------------------------------	-------



ELEV 46	TDZE 45
---------	---------



TDZ/CL Rwy 15  
REIL Rwy 3 and 21  
HIRL Rwy 3-21 and 15-33



CATEGORY	A	B	C	D
LPV DA #	245/24		200 (200-½)	
LNAV/VNAV DA	472/40		427 (500-¾)	
LNAV MDA	500/24 455 (500-½)		500/45 455 (500-¾)	
<input checked="" type="checkbox"/> CIRCLING	540-1 494 (500-1)		540-1½ 494 (500-1½) 740-2¼ 694 (700-2¼)	

SE-2, 15 MAY 2025 to 12 JUN 2025

SE-2, 15 MAY 2025 to 12 JUN 2025