

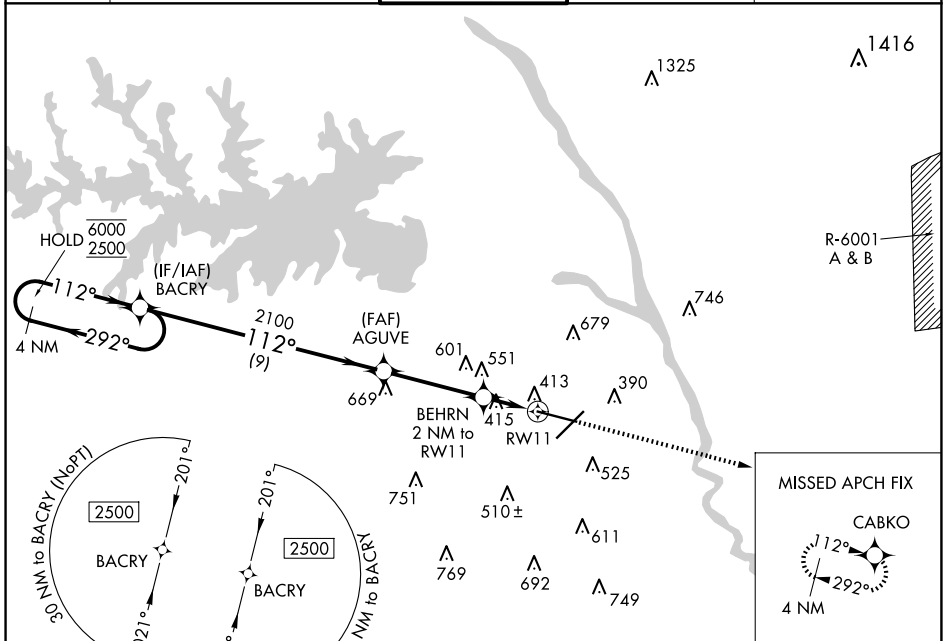
WAAS CH 61014 W11A	APP CRS 112°	Rwy Idg TDZE 236 Apt Elev 236	8601
--	------------------------	---	-------------

RNAV (GPS) RWY 11

COLUMBIA METRO (CAE)

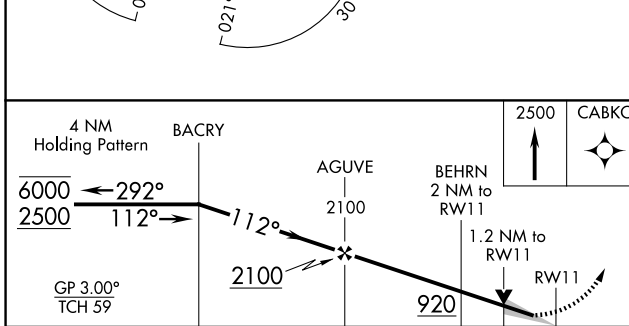
RNP APCH-GPS.	ALSF-2	MISSED APPROACH: Climb to 2500 direct CABKO and hold.
<p>For uncompensated Baro-VNAV systems, LNAV/VNAV NA below -6°C or above 54°C.</p>		

ATIS 120.15	COLUMBIA APP CON 133.4 285.6 (290°-109°) 124.15 338.2 (110°-289°)	COLUMBIA TOWER 119.5 257.8	GND CON 121.9 348.6	CLNC DEL 119.75
-----------------------	---	--------------------------------------	-------------------------------	---------------------------



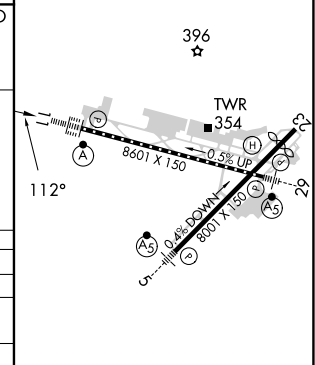
SE-2, 15 MAY 2025 to 12 JUN 2025

SE-2, 15 MAY 2025 to 12 JUN 2025



ELEV 236	TDZE 236
----------	----------

CATEGORY	A	B	C	D
LPV DA		436/18	200 (200-½)	
LNAV/VNAV DA		673/40	437 (500-¾)	
LNAV MDA	680/24	444 (500-½)	680/45	444 (500-¾)
CIRCLING	740-1 504 (600-1)	860-1 624 (700-1)	1040-2¼ 804 (900-2¼)	1040-2½ 804 (900-2½)



REIL Rwy 23
TDZ/CL Rwy 11
HIRL Rwy 5-23 and 11-29