

WAAS CH <b>72935</b> <b>W21A</b>	APP CRS <b>207°</b>	Rwy Idg TDZE <b>626</b> Apt Elev <b>633</b>
----------------------------------------	------------------------	---------------------------------------------------

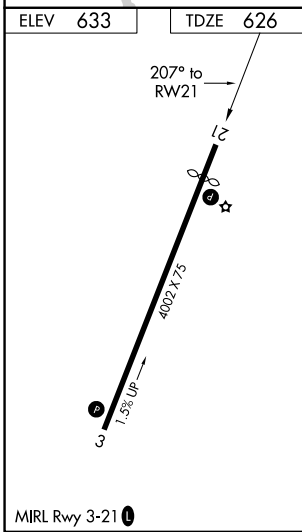
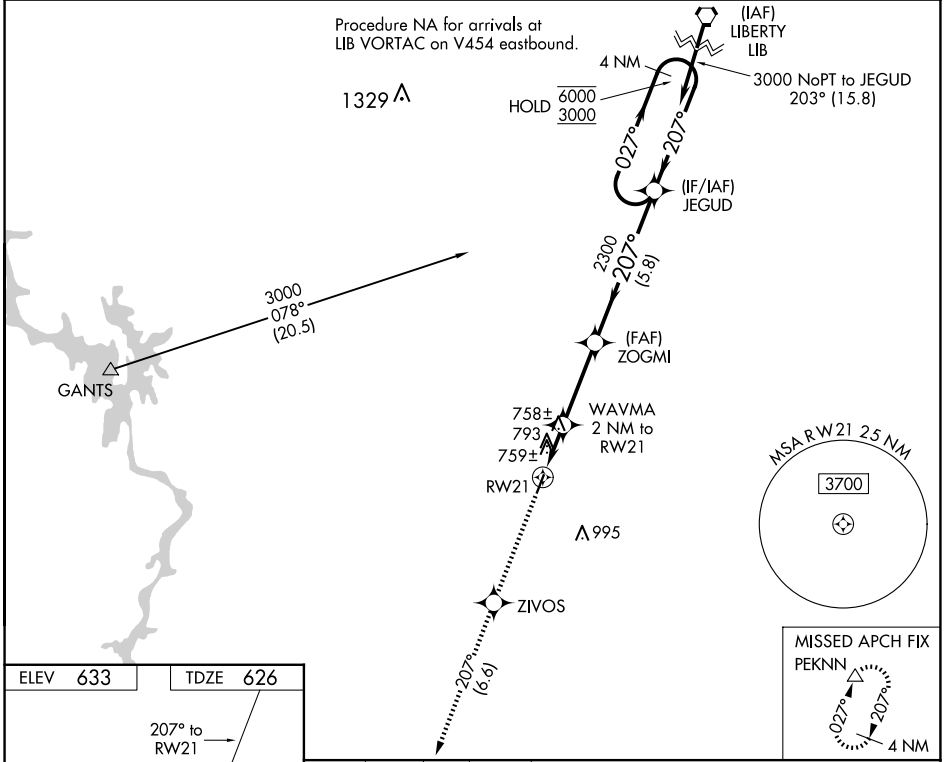
# RNAV (GPS) RWY 21

MONTGOMERY COUNTY (43A)

RNP APCH-GPS. MISSED APPROACH: Climb to 3000 direct ZIVOS and on track 207° to PEKNN and hold.

▼ Rwy 21 helicopter visibility reduction below 1 SM NA. Use Asheboro altimeter setting; when not received, use Albemarle altimeter setting. Procedure NA at night.

HBI AWOS-3 <b>119.275</b>	FAYETTEVILLE APP CON <b>127.8 343.725</b>	UNICOM <b>122.8 (CTAF) 0</b>
------------------------------	----------------------------------------------	---------------------------------



3000	ZIVOS	PEKNN	Visual Segment - Obstacles.	
↑	✦	tr 207°	JEGUD	4 NM Holding Pattern
WAVMA 2 NM to RWY 21		ZOGMI	027° → 6000	
RWY 21	1280	2300	← 207° 3000	
← 2 NM		3.2 NM	5.8 NM	
CATEGORY	A	B	C	D
LP MDA	1060-1	434 (500-1)	NA	
LNAV MDA	1100-1	474 (500-1)	NA	
<input checked="" type="checkbox"/> CIRCLING	1240-1 607 (700-1)	1340-1 707 (800-1)	NA	

SE-2, 15 MAY 2025 to 12 JUN 2025

SE-2, 15 MAY 2025 to 12 JUN 2025