

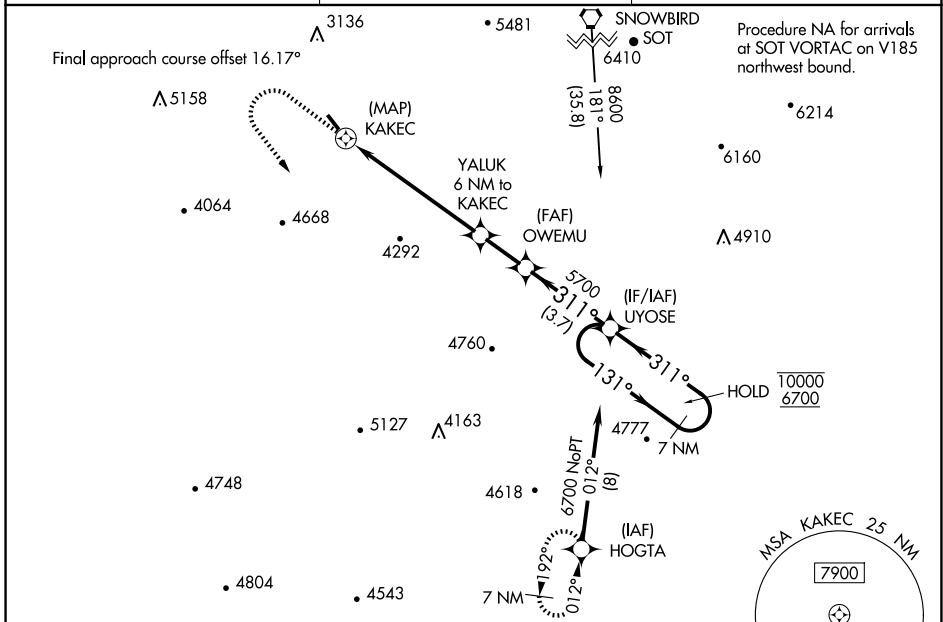
APP CRS	Rwy Idg	<b>3060</b>
<b>311°</b>	TDZE	<b>2807</b>
	Apt Elev	<b>2857</b>

# RNAV (GPS) RWY 33

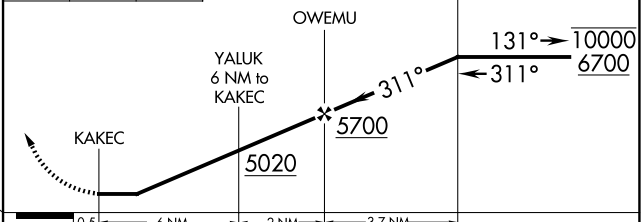
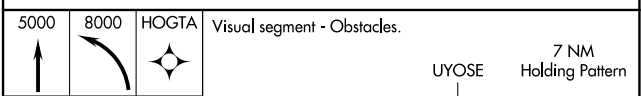
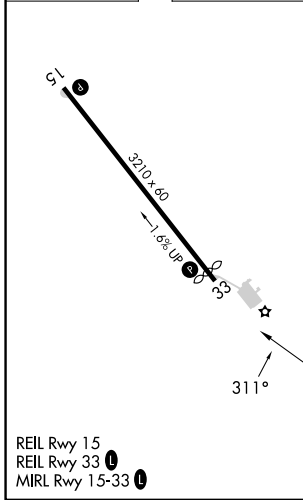
JACKSON COUNTY (24A)

RNP APCH.	MISSED APPROACH: Climb to 5000 then climbing left turn to 8000 direct HOGTA and hold.
<p>▼ Procedure NA at night.</p> <p>▲ Rwy 33 helicopter visibility reduction below 1 SM NA.</p> <p>☁ -14°C</p>	

AWOS-3PT <b>118.9</b>	ATLANTA CENTER <b>134.8 379.95</b>	UNICOM <b>123.0 (CTAF) 0</b>
--------------------------	---------------------------------------	---------------------------------



ELEV 2857	TDZE 2807
-----------	-----------



CATEGORY	A	B	C	D
LNAV MDA	4360-1¼ 1553 (1600-1¼)	4360-1½ 1553 (1600-1½)	NA	
<input checked="" type="checkbox"/> CIRCLING	4360-1¼ 1503 (1600-1¼)	4520-1½ 1663 (1700-1½)	NA	

SE-2, 15 MAY 2025 to 12 JUN 2025

SE-2, 15 MAY 2025 to 12 JUN 2025