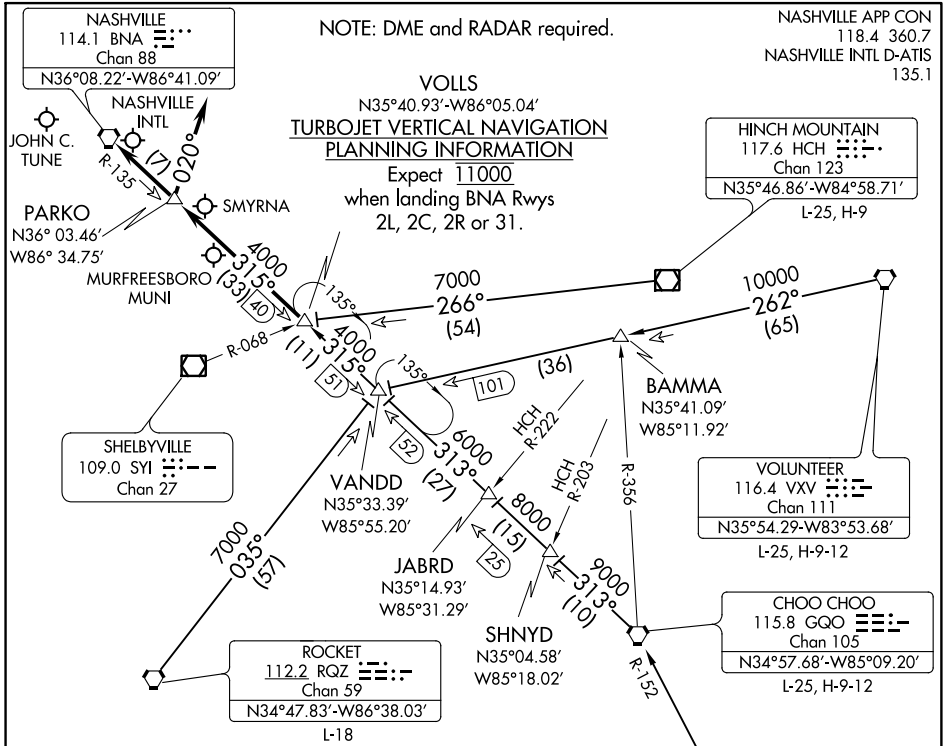


VOLLS ONE ARRIVAL

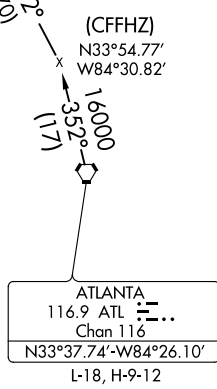
NASHVILLE, TENNESSEE



ARRIVAL ROUTE DESCRIPTION

- ATLANTA TRANSITION (ATL.VOLLS1):** From over ATL VORTAC via ATL R-352 and GGO R-152 to GGO VORTAC, then via GGO R-313 to VANDD, then via BNA R-135 to VOLLS INT. Thence....
- CHOO CHOO TRANSITION (GGO.VOLLS1):** From over GGO VORTAC via GGO R-313 to VANDD, then via BNA R-135 to VOLLS INT. Thence....
- HINCH MOUNTAIN TRANSITION (HCH.VOLLS1):** From over HCH VOR/DME via HCH R-266 to VOLLS INT. Thence. . . .
- ROCKET TRANSITION (RQZ.VOLLS1):** From over RQZ VORTAC via RQZ R-035 to VANDD, then via BNA R-135 to VOLLS INT. Thence....
- VOLUNTEER TRANSITION (VVX.VOLLS1):** From over VVX VORTAC via VVX R-262 to VANDD, then via BNA R-135 to VOLLS INT. Thence....

- TURBOJETS/TURBOPROPS LANDING NASHVILLE INTL:**
 -Landing North: From over VOLLS on BNA R-135 to BNA VORTAC, expect vectors to final approach course passing VOLLS.
 -Landing South: From over VOLLS on BNA R-135 to PARKO/BNA 7 DME, then on heading 020° for vectors to final approach course.
- NON-TURBINE LANDING NASHVILLE INTL:**
 -All Runways: From over VOLLS on BNA R-135 to BNA VORTAC, expect vectors to final approach course passing VOLLS.
- LANDING JOHN C. TUNE, SMYRNA, MURFREESBORO MUNI:**
 -From over VOLLS on BNA R-135 to BNA VORTAC, expect vectors to final approach course passing VOLLS.



NOTE: Chart not to scale.

VOLLS ONE ARRIVAL

NASHVILLE, TENNESSEE

SE-1, 01 FEB 2018 to 01 MAR 2018

SE-1, 01 FEB 2018 to 01 MAR 2018