

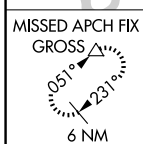
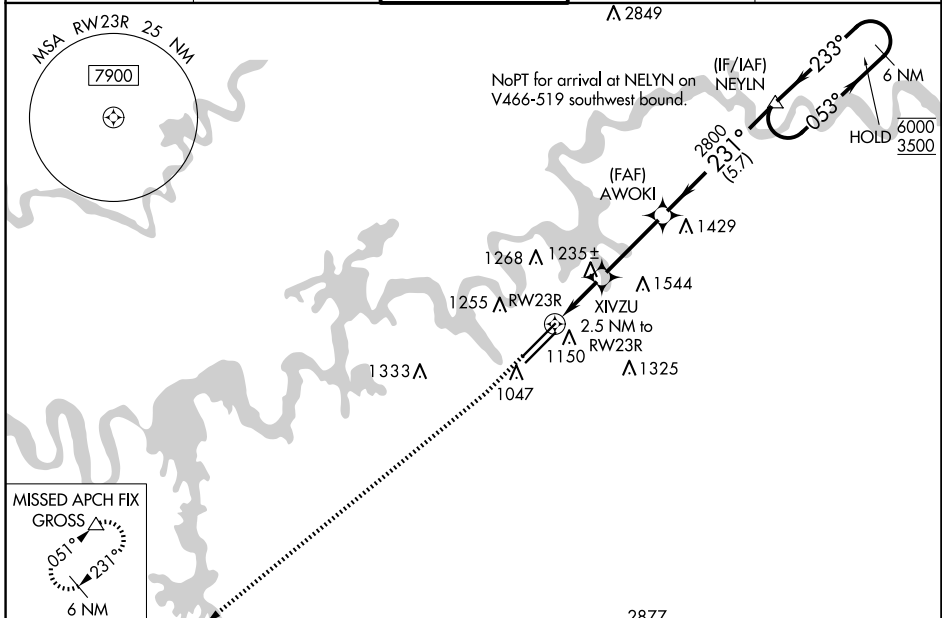
WAAS CH 81902 W23A	APP CRS 231°	Rwy Idg TDZE 984 Apt Elev 986
--	------------------------	---

RNAV (GPS) RWY 23R

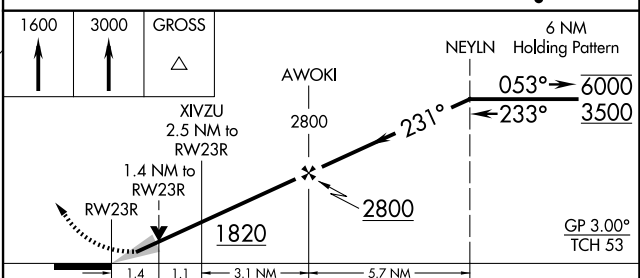
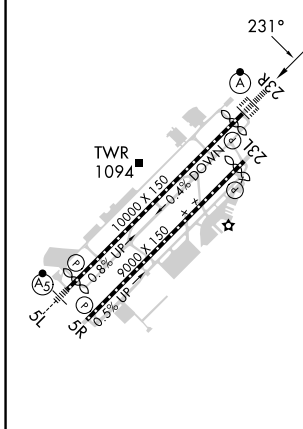
MC GHEE TYSON (T'YS)

RNP APCH - GPS.	ALSF-2	MISSED APPROACH: Climb to 1600 then climb to 3000 direct GROSS and hold.
<p>For uncompensated Baro-VNAV systems, LNAV/VNAV NA below -10°C or above 54°C. For inop ALS, increase LNAV Cat C/D visibility to 1½ SM.</p>		

ATIS 128.35	KNOXVILLE APP CON 123.9 360.8	KNOXVILLE TOWER 121.2 257.8	GND CON 121.9 348.6	CLINC DEL 121.65
-----------------------	---	---------------------------------------	-------------------------------	----------------------------



ELEV 986	D	TDZE 984
-----------------	----------	-----------------



CATEGORY	A	B	C	D
LPV DA		1184/18	200 (200-½)	
LNAV/VNAV DA		1529-1½	545 (600-1½)	
LNAV MDA	1500/24	516 (600-½)	1500/55	516 (600-1)
C CIRCLING	1500-1 514 (600-1)	1560-1 574 (700-1)	1660-2 674 (700-2)	1900-3 914 (1000-3)

HIRL Rws 5L-23R and 5R-23L
REIL Rws 5R and 23L
TDZ/CL Rws 5R and 23R

SE-1, 15 MAY 2025 to 12 JUN 2025

SE-1, 15 MAY 2025 to 12 JUN 2025