

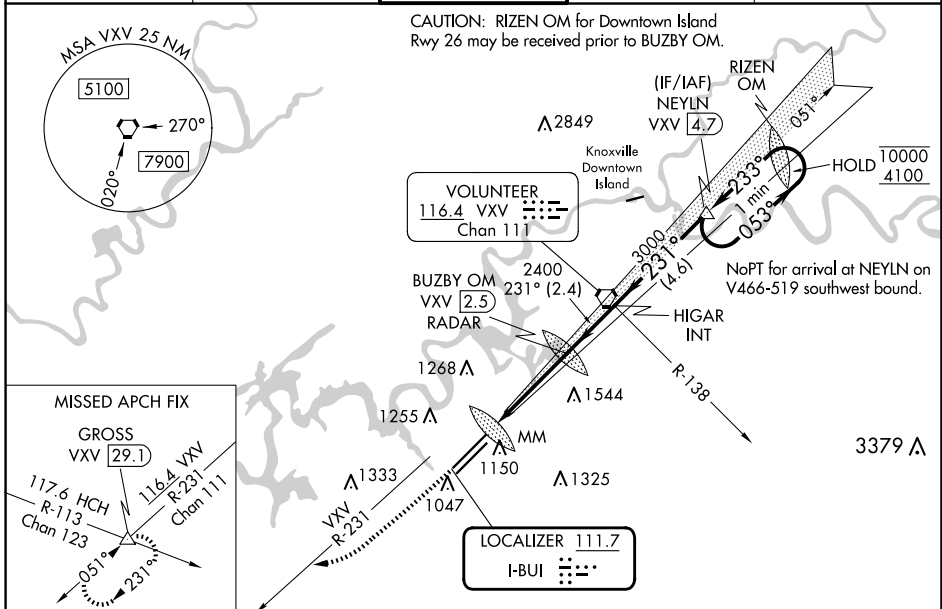
LOC I-BUI <b>111.7</b>	APP CRS <b>231°</b>	Rwy Idg TDZE Apt Elev	<b>9495</b> <b>984</b> <b>986</b>
---------------------------	------------------------	-----------------------------	---

# ILS or LOC RWY 23R

MC GHEE TYSON (T'YS)

DME or RADAR required.		ALSIF-2	MISSED APPROACH: Climb to 2000 then climbing right turn to 4000 on heading 240° and VXV VORTAC R-231 to GROSS INT/VXV 29.1 DME and hold.
<p>▼ For inop ALS, increase S-ILS 23R Cat E visibility to RVR 4000; increase S-LOC 23R Cat C/D/E visibility to 1/8 SM.</p>			

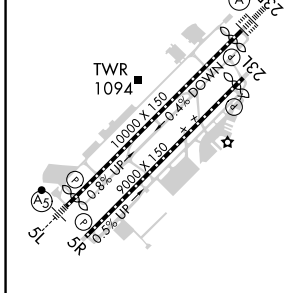
ATIS <b>128.35</b>	KNOXVILLE APP CON <b>123.9 360.8</b>	KNOXVILLE TOWER <b>121.2 257.8</b>	GND CON <b>121.9 348.6</b>	CLNC DEL <b>121.65</b>
-----------------------	---	---------------------------------------	-------------------------------	---------------------------



SE-1, 15 MAY 2025 to 12 JUN 2025

SE-1, 15 MAY 2025 to 12 JUN 2025

ELEV 986	<b>D</b>	TDZE 984
----------	----------	----------



HIRL Rwy 5L-23R and 5R-23L	REIL Rwy 5R and 23L	TDZ/CL Rwy 5R and 23R
FAF to MAP 4.2 NM		
Knots	60	90 120 150 180
Min:Sec	4:12	2:48 2:06 1:41 1:24

2000	4000	VXV R-231	GROSS	One Minute Holding Pattern					
↑		hdg 240°	△						
BUZBY OM VXV (2.5) RADAR		HIGAR INT	NEYLN VXV (4.7)						
VXV (6.6)		MM	2364						
2400		3000	231°						
053°		233°	10000						
4100		GS 3.00° TCH 53							
0.3 1.3 2.5 NM		2.4 NM		4.6 NM					
CATEGORY	A	B	C	D	E				
S-ILS 23R	1184/18					200 (200-½)			
S-LOC 23R	1560/24 576 (600-½)		1560-1¼		576 (600-1¼)				
CIRCLING	1560-1 574 (600-1)		1660-2 674 (700-2)		1900-3 914 (1000-3)				