

LOC/DME I-OXH <b>110.75</b> Chan <b>44</b> (Y)	APP CRS <b>231°</b>	Rwy Idg TDZE Apt Elev	<b>8600</b> <b>965</b> <b>986</b>
--	------------------------	-----------------------------	---

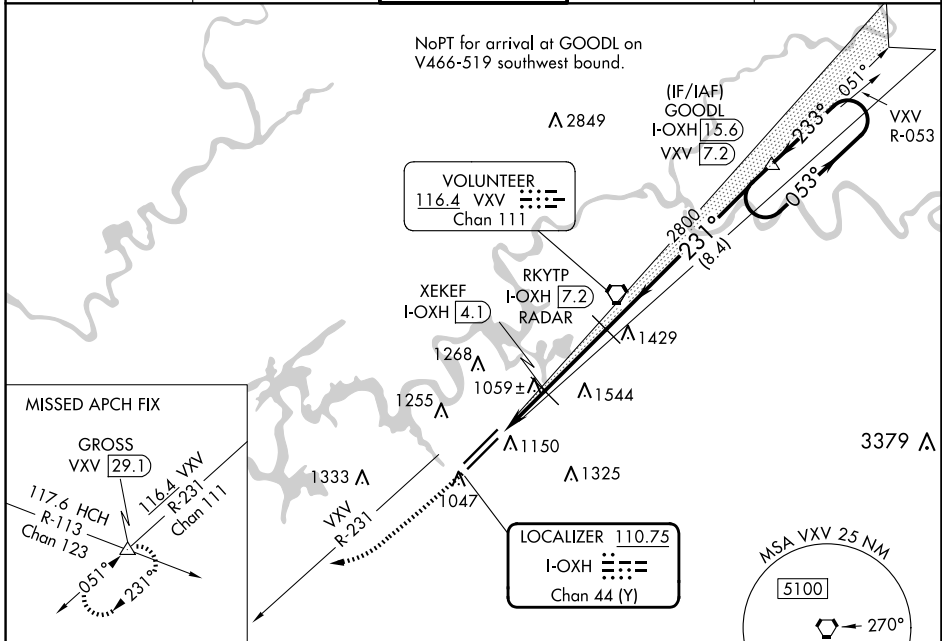
# ILS or LOC RWY 23L

MC GHEE TYSON (T'YS)

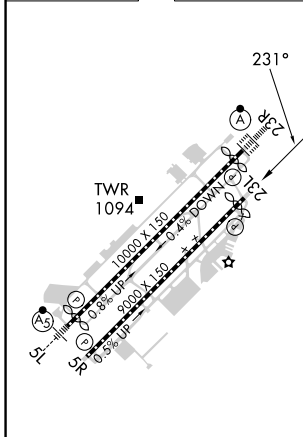
DME or RADAR required.

**MISSED APPROACH:** Climb to 2000 then climbing right turn to 4000 on heading 240° and VXV VORTAC R-231 to GROSS INT/VXV 29.1 DME and hold.

ATIS <b>128.35</b>	KNOXVILLE APP CON <b>123.9 360.8</b>	KNOXVILLE TOWER <b>121.2 257.8</b>	GND CON <b>121.9 348.6</b>	CLNC DEL <b>121.65</b>
-----------------------	---	---------------------------------------	-------------------------------	---------------------------



ELEV 986	<b>D</b>	TDZE 965
----------	----------	----------



2000	4000	VXV R-231	GROSS	Disregard all marker beacon indications.															
↑	hdg 240°		△	GOODL I-OXH 15.6 One Minute Holding Pattern															
<table border="1"> <tr> <td>CATEGORY</td> <td>A</td> <td>B</td> <td>C</td> <td>D</td> </tr> <tr> <td>S-ILS 23L</td> <td colspan="4">1165/40 200 (200-3/4)</td> </tr> <tr> <td>S-LOC 23L</td> <td colspan="4">1320/55 355 (400-1)</td> </tr> </table>					CATEGORY	A	B	C	D	S-ILS 23L	1165/40 200 (200-3/4)				S-LOC 23L	1320/55 355 (400-1)			
CATEGORY	A	B	C	D															
S-ILS 23L	1165/40 200 (200-3/4)																		
S-LOC 23L	1320/55 355 (400-1)																		

HIRL Rws 5L-23R and 5R-23L  
REIL Rws 5R and 23L  
TDZ/CL Rws 5R and 23R

<b>C</b> CIRCLING	1500-1 514 (600-1)	1620-1 634 (700-1)	1660-2 674 (700-2)	1900-3 914 (1000-3)
-------------------	-----------------------	-----------------------	-----------------------	------------------------

SE-1, 15 MAY 2025 to 12 JUN 2025

SE-1, 15 MAY 2025 to 12 JUN 2025