

# ILS RWY 23 (SA CAT I) TRI-CITIES (TRI)

LOC I-TRI <b>109.9</b>	APP CRS <b>230°</b>	Rwy ldg <b>8000</b>
		TDZE <b>1518</b>
		Apt Elev <b>1519</b>

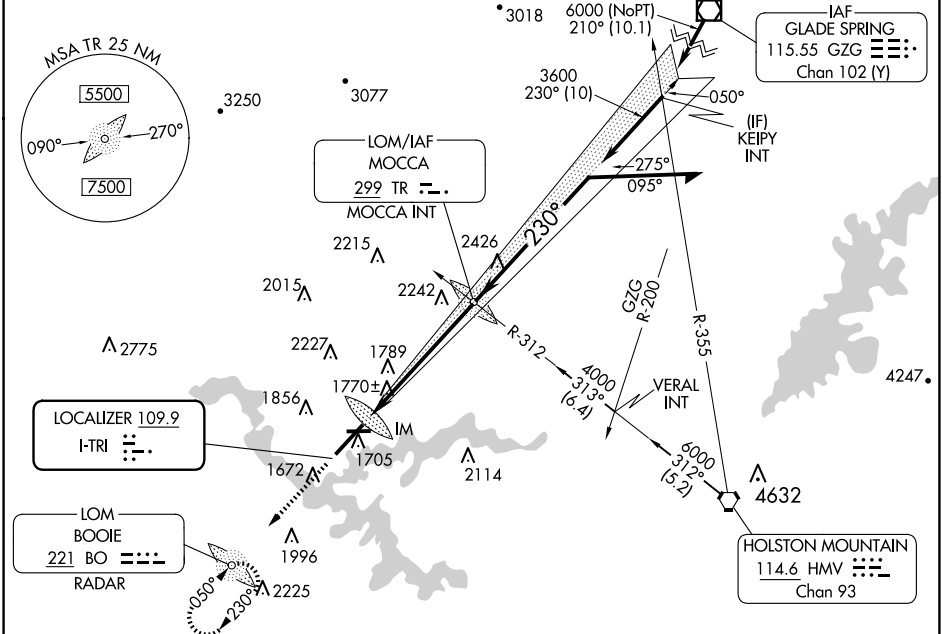
ADF or RADAR required.

Requires specific OPSPEC, MSPEC, or LOA approval and use of HUD to DH. CAUTION:  
Air traffic control tower 1634 feet MSL located 940 feet right of runway centerline  
357 feet from runway threshold. Procedure NA when tower closed.

ALSF-2

MISSED APPROACH: Climb to 3800 direct BOOIE LOM/RADAR and hold.

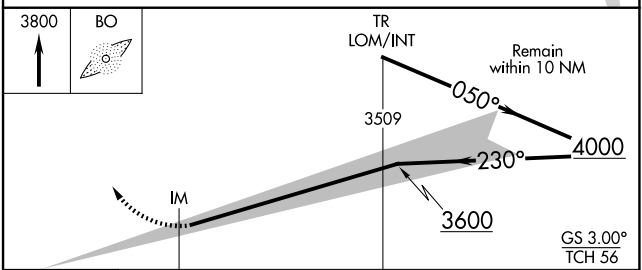
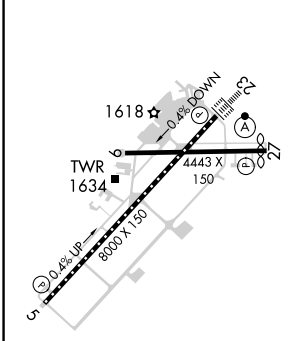
ATIS <b>118.25</b>	TRI-CITY APP CON ★ <b>134.425 349.0</b>	TRI-CITY TOWER ★ <b>119.5 (CTAF) 257.8</b>	GND CON <b>121.7 348.6</b>	UNICOM <b>122.95</b>
-----------------------	--	---	-------------------------------	-------------------------



SE-1, 15 MAY 2025 to 12 JUN 2025

SE-1, 15 MAY 2025 to 12 JUN 2025

ELEV 1519	<b>D</b>	TDZE 1518
-----------	----------	-----------



1050'	6 NM			
CATEGORY	A	B	C	D
S-ILS 23	RA 192/16 150 DA 1668			

### SA CATEGORY I ILS - SPECIAL AIRCREW & AIRCRAFT CERTIFICATION REQUIRED

REIL Rwy 5 and 27  
TDZ/CL Rwy 23  
HIRL Rwy 5-23  
MIRL Rwy 9-27