

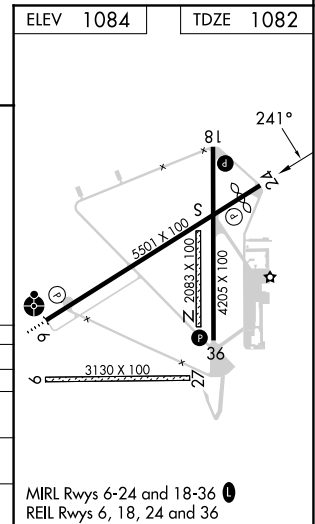
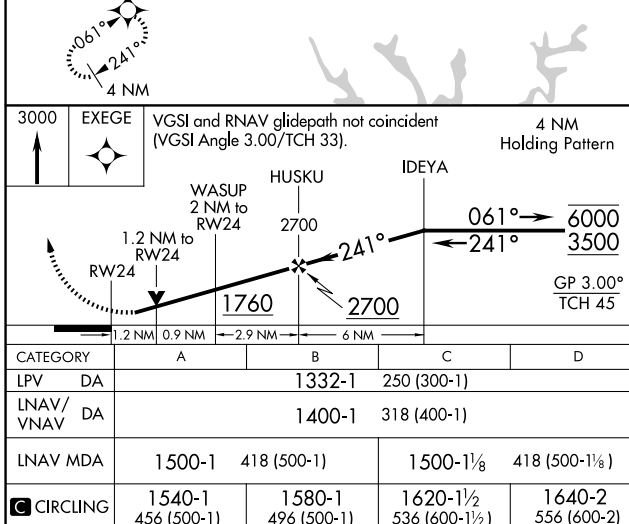
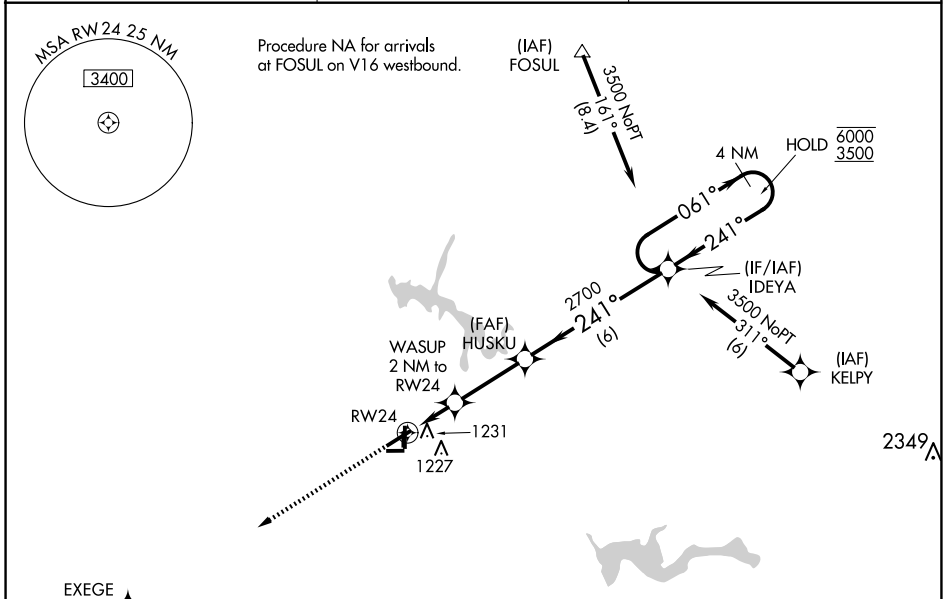
WAAS CH <b>53324</b> <b>W24A</b>	APP CRS <b>241°</b>	Rwy Idg TDZE Apt Elev	<b>5001</b> <b>1082</b> <b>1084</b>
--	------------------------	-----------------------------	---

# RNAV (GPS) RWY 24

TULLAHOMA RGNL/WM NORTHERN FLD (THA)

RNP APCH - GPS.		MISSED APPROACH: Climb to 3000 direct EXEGE and hold.
<b>T</b>	Circling NA to Rws 9 and 27. Circling Rwy 18 and 36 NA at night. Rwy 24 helicopter visibility reduction below 3/4 SM NA. For uncompensated Baro-VNAV systems, LNAV/VNAV NA below -17°C or above 37°C.	

AWOS-3 <b>128.325</b>	MEMPHIS CENTER <b>128.15 323.125</b>	UNICOM <b>123.0 (CTAF) 0</b>
--------------------------	---	---------------------------------



SE-1, 15 MAY 2025 to 12 JUN 2025

SE-1, 15 MAY 2025 to 12 JUN 2025