

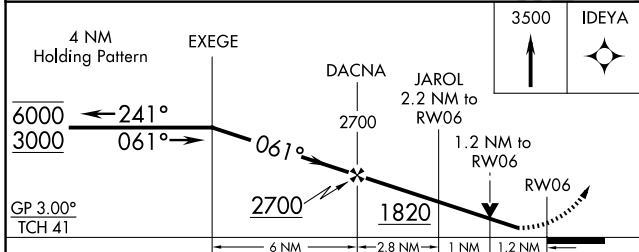
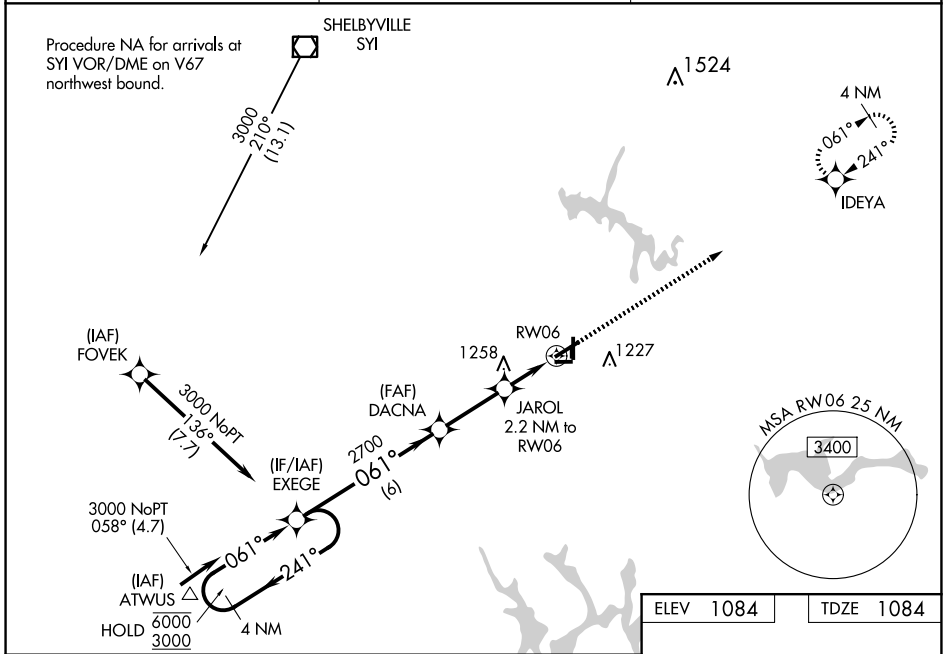
WAAS CH <b>99324</b> <b>W06A</b>	APP CRS <b>061°</b>	Rwy Idg TDZE Apt Elev	<b>5501</b> <b>1084</b> <b>1084</b>
--	------------------------	-----------------------------	---

# RNAV (GPS) RWY 6

TULLAHOMA RGNL/WM NORTHERN FLD (THA)

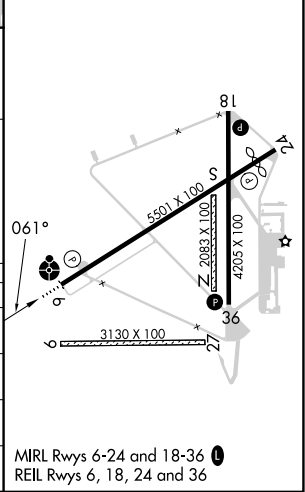
RNP APCH - GPS.	<p>⚠ Circling NA to Rwys 9 and 27. Circling to Rwy 18 and 36 NA at night. Rwy 6 helicopter visibility reduction below 3/4 SM NA. Inop table does not apply to LPV all Cats and LNAV Cat A/B. For uncompensated Baro-VNAV systems, LNAV/VNAV NA below -17°C or above 54°C. For inop ALS increase LNAV/VNAV Cat C/D visibility to 1 3/8 SM.</p>	<p>ODALS</p>	<p>MISSED APPROACH: Climb to 3500 direct IDEYA and hold.</p>
-----------------	---	--------------	--

AWOS-3 <b>128.325</b>	MEMPHIS CENTER <b>128.15 323.125</b>	UNICOM <b>123.0 (CTAF)</b>
--------------------------	---	-------------------------------



ELEV 1084	TDZE 1084
-----------	-----------

CATEGORY	A	B	C	D
LPV DA		1334-1	250 (300-1)	
LNAV/VNAV DA		1525-1 1/8	441 (500-1 1/8)	
LNAV MDA		1500-1	416 (500-1)	
CIRCLING	1540-1 456 (500-1)	1580-1 496 (500-1)	1620-1 1/2 536 (600-1 1/2)	1640-2 556 (600-2)



SE-1, 15 MAY 2025 to 12 JUN 2025

SE-1, 15 MAY 2025 to 12 JUN 2025