

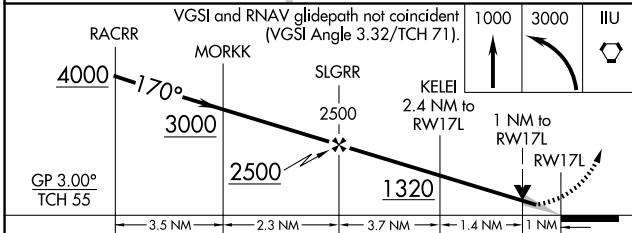
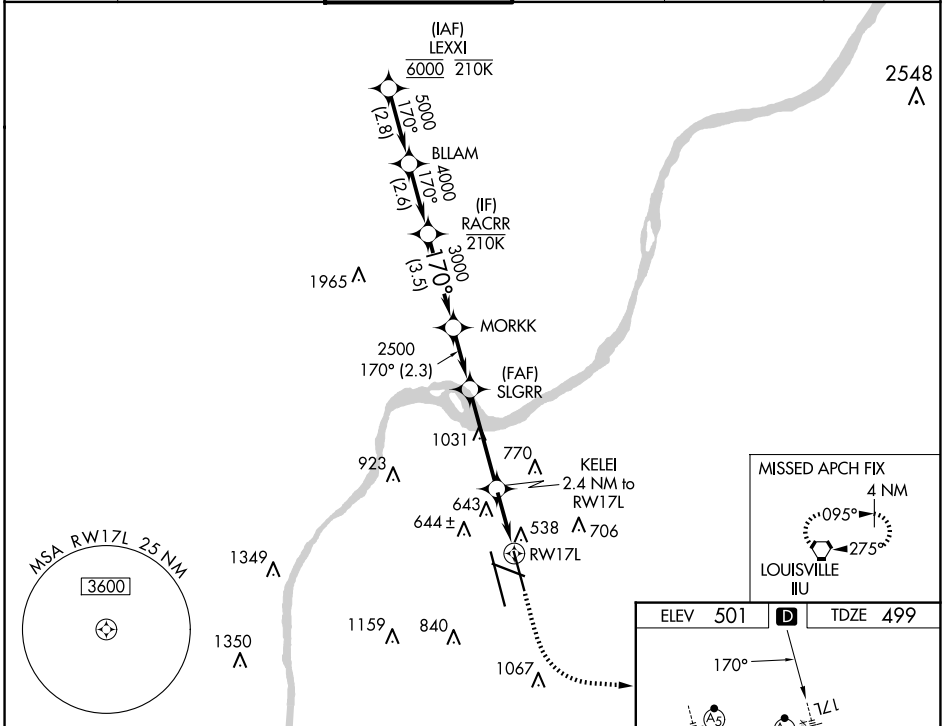
WAAS CH 90101 W17B	APP CRS 170°	Rwy Idg TDZE 499 Apt Elev 501	7800
--	------------------------	---	-------------

RNAV (GPS) Y RWY 17L

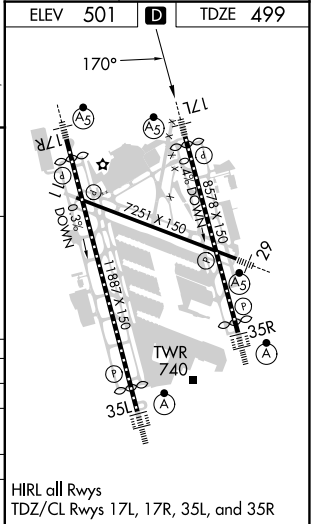
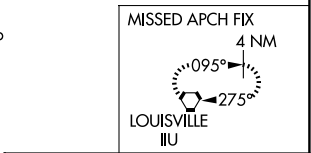
LOUISVILLE MUHAMMAD ALI INTL (SDF)

RNP APCH - GPS.	MALSRS	MISSED APPROACH: Climb to 1000 then climbing left turn to 3000 direct IIL VORTAC and hold, continue climb-in-hold to 3000.
<p>Simultaneous approach authorized. Circling Rwy 11 NA at night. For uncompensated Baro-VNAV systems, LNAV/VNAV NA below -13°C or above 54°C. LNAV procedure NA during simultaneous operations. Use of FD or AP required during simultaneous operations. For inop ALS, increase LNAV/VNAV all Cats visibility to RVR 6000.</p>		

D-ATIS 118.725	LOUISVILLE APP CON 132.075 327.0	LOUISVILLE TOWER 124.2 257.8	GND CON 121.7 348.6	CLNC DEL 126.1 275.8	CPDLC
--------------------------	--	--	-------------------------------	--------------------------------	-------



CATEGORY	A	B	C	D
LPV DA		699/18	200 (200-½)	
LNAV/VNAV DA		909/40	410 (500-¾)	
LNAV MDA	920/24	421 (500-½)	920/40	421 (500-¾)
CIRCLING	1040-1 539 (600-1)	1140-1 639 (700-1)	1160-1¾ 659 (700-1¾)	1400-3 899 (900-3)



SE-1, 15 MAY 2025 to 12 JUN 2025

SE-1, 15 MAY 2025 to 12 JUN 2025