

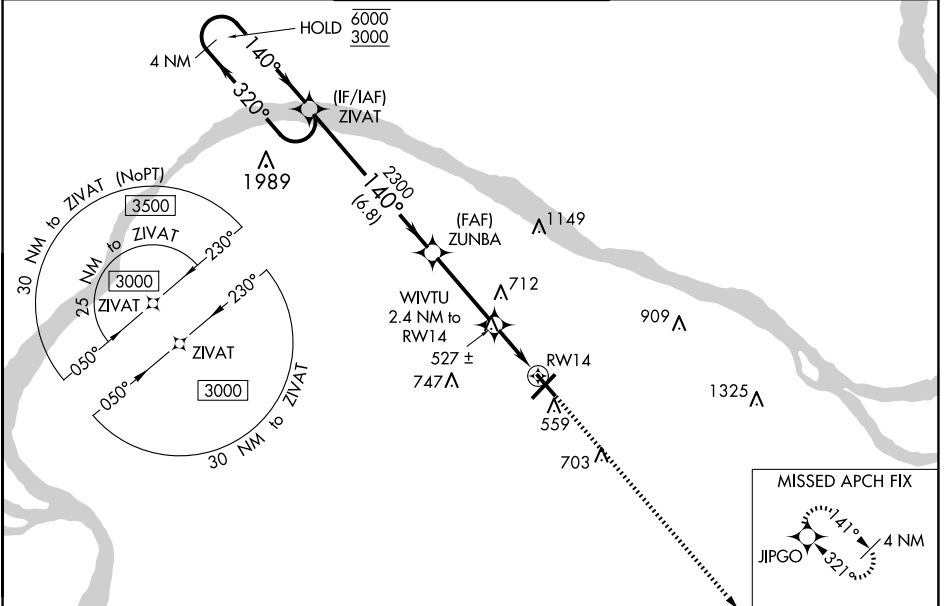
WAAS CH <b>48933</b> <b>W14A</b>	APP CRS <b>140°</b>	Rwy Idg TDZE Apt Elev	<b>5399</b> <b>401</b> <b>411</b>
--	------------------------	-----------------------------	---

# RNAV (GPS) RWY 14

BARKLEY RGNL (PAH)

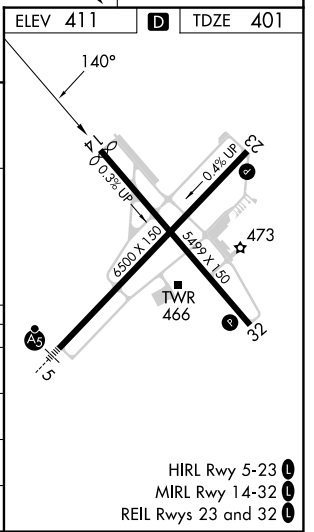
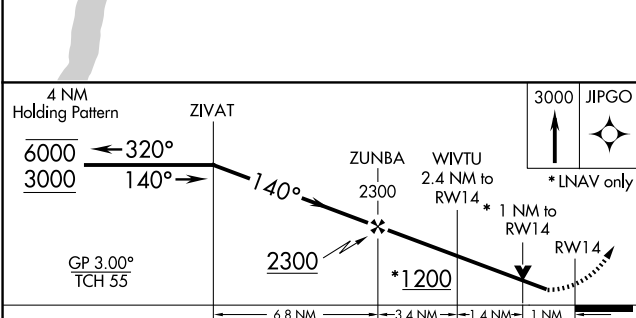
RNP APCH.		MISSED APPROACH: Climb to 3000 direct JIPGO and hold.
Rwy 14 helicopter visibility reduction below 3/4 SM NA. For uncompensated Baro-VNAV systems, LNAV/VNAV NA below -15°C or above 54°C.		

ASOS <b>118.375</b>	MEMPHIS CENTER <b>133.65 292.15</b>	PADUCAH TOWER ★ <b>119.6 (CTAF) 306.9</b>	GND CON <b>121.7 306.9</b>	UNICOM <b>122.95</b>
------------------------	--	--	-------------------------------	-------------------------



SE-1, 15 MAY 2025 to 12 JUN 2025

SE-1, 15 MAY 2025 to 12 JUN 2025



CATEGORY	A	B	C	D
LPV DA		708-1	307 (300-1)	
LNAV/VNAV DA		706-1	305 (300-1)	
LNAV MDA	780-1	379 (400-1)	780-1½	379 (400-1½)
<b>C</b> CIRCLING	900-1	489 (500-1)	920-1½ 509 (600-1½)	1100-2¼ 689 (700-2¼)

HIRL Rwy 5-23  
MIRL Rwy 14-32  
REIL Rwy 23 and 32