

WAAS CH 78216 W18A	APP CRS 182°	Rwy Ldg TDZE Apt Elev	8000 407 407
---------------------------------	------------------------	-----------------------------	---

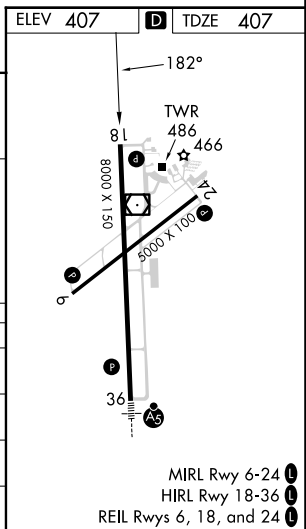
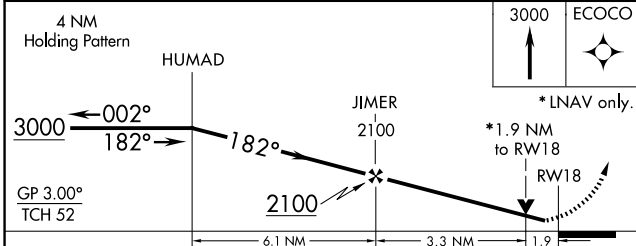
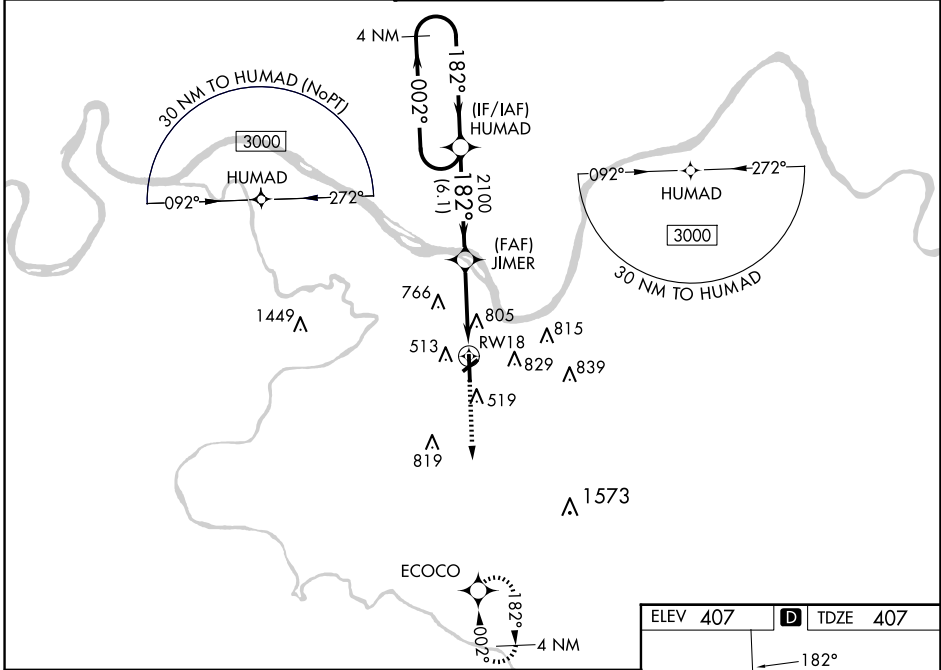
RNAV (GPS) RWY 18

OWENSBORO/DAVIESS COUNTY RGNL (OWB)

⚠ For uncompensated Baro-VNAV systems, LNAV/VNAV NA below -15° C (5°F) or above 54°C (130°F). DME/DME RNP-0.3 NA. When local altimeter setting not received, use Evansville altimeter setting: increase LPV DA to 666 feet; increase LNAV/VNAV DA to 1204 feet and all Cats visibility ¼ mile; increase all MDA 60 feet and LNAV Cats C/D visibility ¼ mile and Circling Cats C/D visibility ¼ mile. Baro-VNAV and VDP NA when using Evansville altimeter setting.

MISSED APPROACH:
Climb to 3000 direct ECOCO and hold.

AWOS-3PT 119.025	EVANSVILLE APP CON * 124.025 290.9	OWENSBORO TOWER * 120.7 (CTAF) 251.15	GND CON 121.7	UNICOM 122.95
----------------------------	--	---	-------------------------	-------------------------



CATEGORY	A	B	C	D
LPV DA	607-¾ 200 (200-¾)			
LNAV/ VNAV DA	1145-2 ½ 738 (800-2 ½)			
LNAV MDA	1060-1	653 (700-1)	1060-1 ⅞	653 (700-1 ⅞)
CIRCLING	1060-1 653 (700-1)	1120-1 713 (800-1)	1140-2 733 (800-2)	1140-2 ¼ 733 (800-2 ¼)

SE-1, 07 AUG 2025 to 04 SEP 2025

SE-1, 07 AUG 2025 to 04 SEP 2025